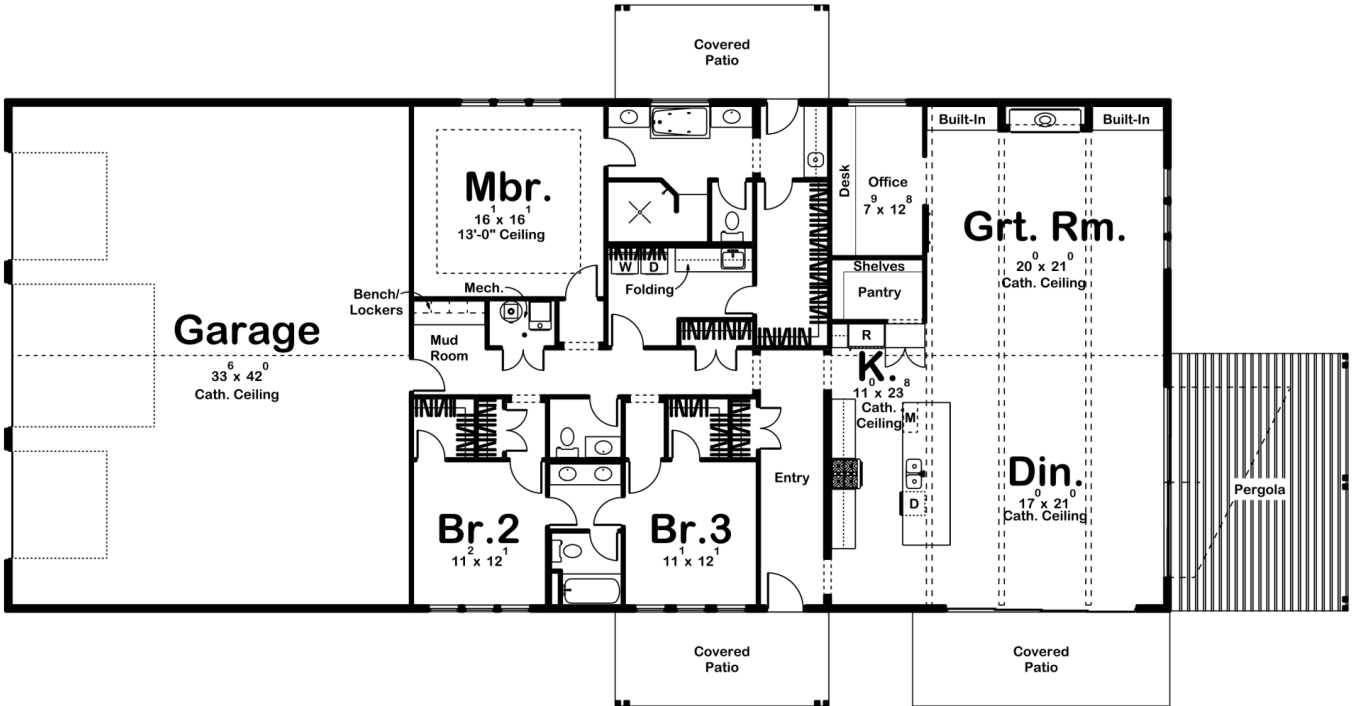




30168 - Round Rock Data Sheet

2752 SQ FT	3 BEDS	3 BATHS	3 BAYS	113' 0" WIDE	59' 0" DEEP
---------------	-----------	------------	-----------	-----------------	----------------



Construction Specs

Layout

Bedrooms

Bathrooms	3
Garage Bays	3
Square Footage	
Main Level	2752 Sq. Ft.
Garage	1462 Sq. Ft.
Total Finished Area	2752 Sq. Ft.
Exterior Dimensions	
Width	113' 0"
Depth	59' 0"
Ridge Height <i>Calculated from main floor line</i>	24' 0"
Default Construction Stats <i>Stats are unique to the individual plan.</i>	
Foundation Type	Slab
Exterior Wall Construction	2x6
Roof Pitches	6/12 Primary, Flat Secondary
Main Wall Height	12'

Plan Description

The Round Rock plan is a beautiful Modern Farmhouse Barndominium. The exterior of the home is highlighted by dark board and batten siding, a standing seam metal roof, and a large pergola. The Barndominium main living area is arranged beautifully in an open layout. The entire home feels massive due to its 12' wall height. The great room, dining room, and kitchen all lie under a soaring cathedral ceiling with exposed beams. The great room is warmed by a fireplace that is flanked by built-in bookshelves. A home office is located off the great room and includes a built-in desk. The home's wonderful kitchen includes a large island with a snack bar. The kitchen also includes a huge walk-in pantry with built-in shelves. The dining room leads out to the covered patio through a large sliding glass door. The master suite is located on the left side of the Barndominium home and features a decorative trayed ceiling. The master bathroom includes a soaking tub, his/her vanities, an enclosed toilet area, and a walk-in shower. A coffee bar leads from the master suite to a private covered patio on the rear of the home. Bedrooms 2 and 3 share a Jack and Jill bathroom and each has access to its very own walk-in closet. The home's massive 3-car garage includes a large bay with an oversized door for RVs. The garage accesses the home through a functional mud room that includes a bench and lockers.