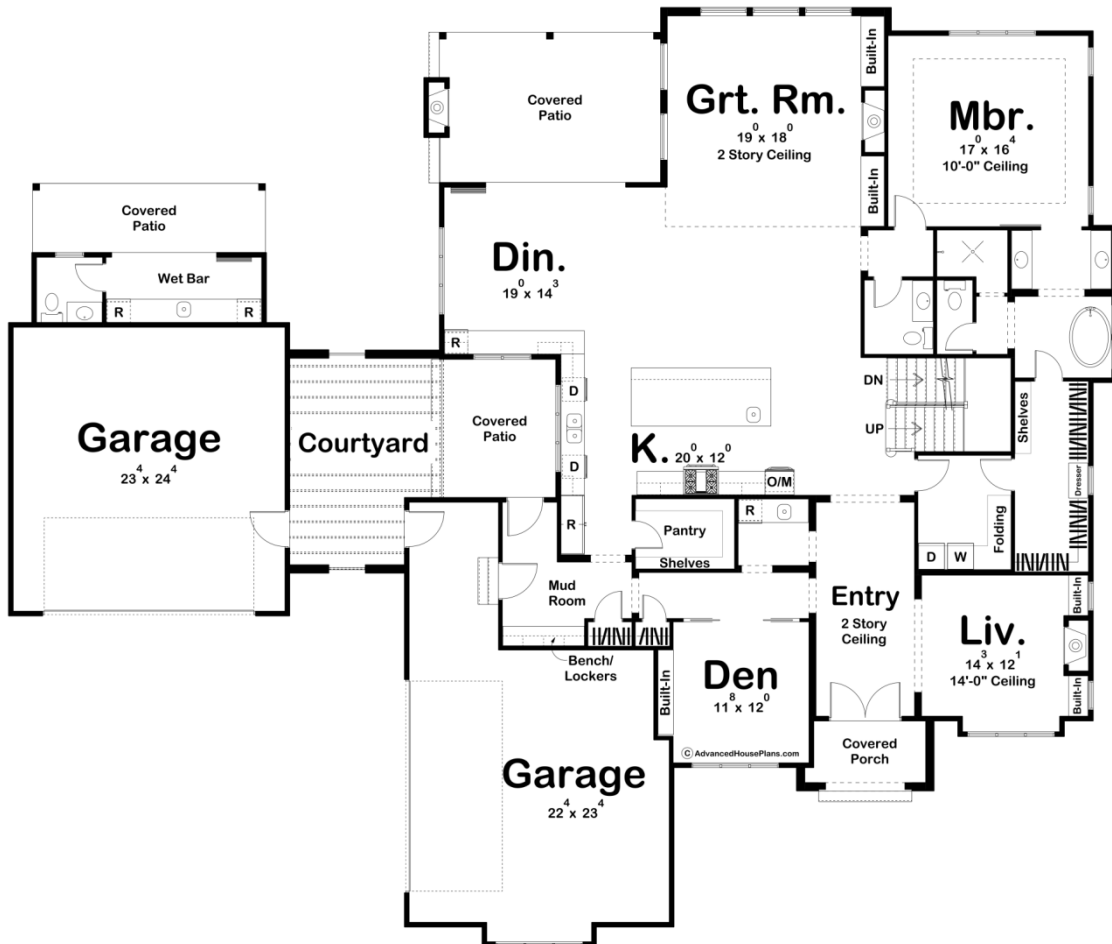
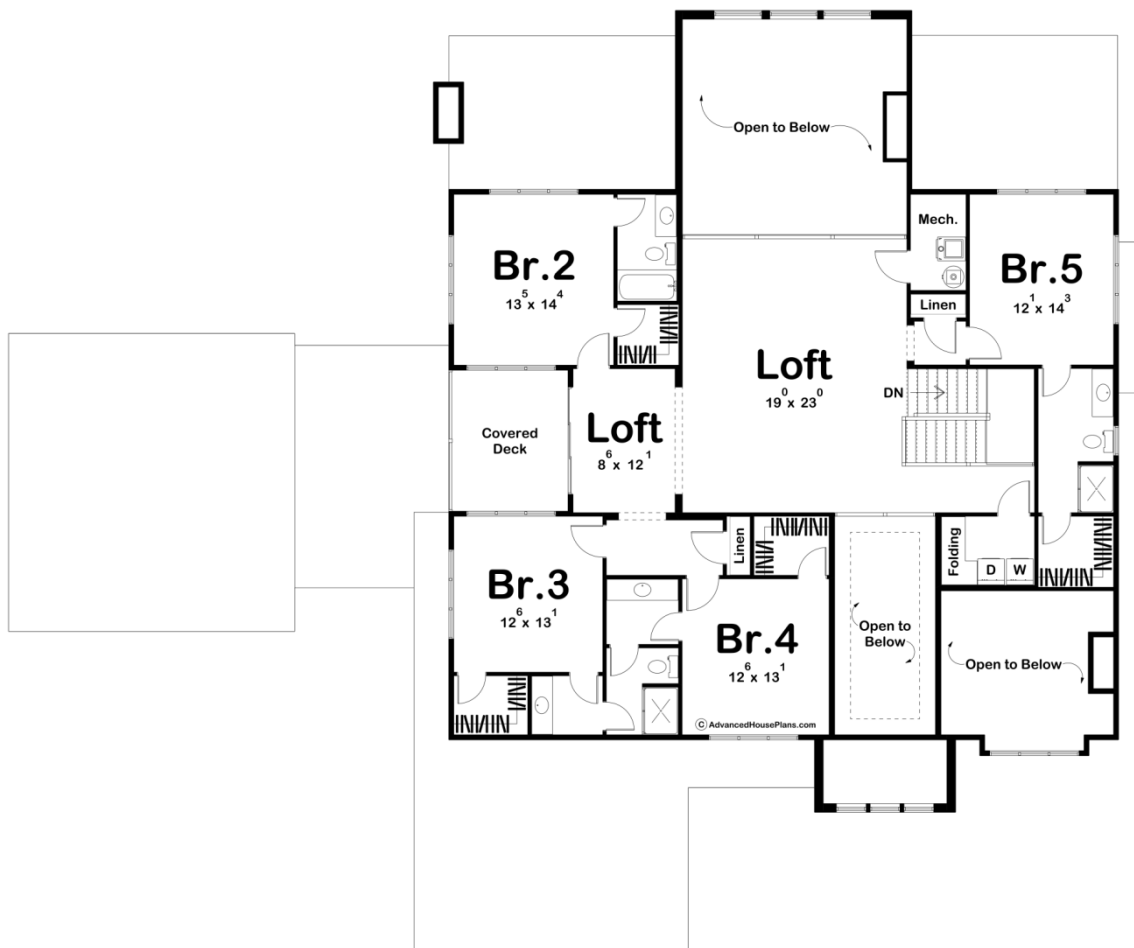




30143 - Saltgrass Data Sheet

| | | | | | |
|---------------|-----------|------------|-----------|----------------|----------------|
| 4862 SQ FT | 5 BEDS | 6 BATHS | 4 BAYS | 95' 0" WIDE | 78' 8" DEEP |
|---------------|-----------|------------|-----------|----------------|----------------|





Construction Specs

Layout

| | |
|-------------|---|
| Bedrooms | 5 |
| Bathrooms | 6 |
| Garage Bays | 4 |

Square Footage

| | |
|---------------------|--------------|
| Main Level | 2892 Sq. Ft. |
| Second Level | 1970 Sq. Ft. |
| Covered Area | 439 Sq. Ft. |
| Garage | 1252 Sq. Ft. |
| Total Finished Area | 4862 Sq. Ft. |

Exterior Dimensions

| | |
|--|--------|
| Width | 95' 0" |
| Depth | 78' 8" |
| Ridge Height | 32' 0" |
| <i>Calculated from main floor line</i> | |

Default Construction Stats

Stats are unique to the individual plan.

| | |
|----------------------------|---|
| Foundation Type | Basement |
| Exterior Wall Construction | 2x4 |
| Roof Pitches | 6/12 Primary, 14/12 8/12 4/12 Secondaries |
| Foundation Wall Height | 9' |
| Main Wall Height | 10' |
| Second Wall Height | 8' |

Plan Description

The Saltgrass plan is a stunning Modern Cottage style house plan. The exterior features a steeply pitched roofline and stucco siding. Contrasting siding colors bring this design to life. The floor plan will leave you amazed with its massive living spaces. Just inside the front covered porch, the 2-story entry is flanked on the right side by a formal living room that is warmed by a fireplace with built-in bookshelves. To the left of the entry, a den with a built-in desk is a perfect place to work from home or relax. The massive kitchen is a chef's dream and flows seamlessly with the other living areas. The kitchen has ample counter space with a large industrial refrigerator, a stunning large island with a snack bar, and a walk-in pantry. The long counter wraps into the dining room where there is a beverage fridge. The dining room opens up to a large covered patio with an outdoor fireplace that is perfect for extending your entertainment spaces. The great room is warmed by a magnificent fireplace that is flanked by built-in bookshelves. The right side of the home features an awe-inspiring master suite. The master bedroom lies under a decorative trayed ceiling. The master bathroom includes his/her vanities, a soaking tub, a walk-in shower, an enclosed toilet, and a large walk-in closet with access to the laundry room. On the second floor, you'll find 4 additional bedrooms. Each bedroom has its own walk-in closet and access to a bathroom. A large loft area overlooks the 2-story great room. A covered deck is accessible from the second-story loft. Back on the main floor, a courtyard stands between the courtyard garages. A wet bar with a covered patio and bathroom faces to the rear of the home and makes a perfect place to relax by the pool.