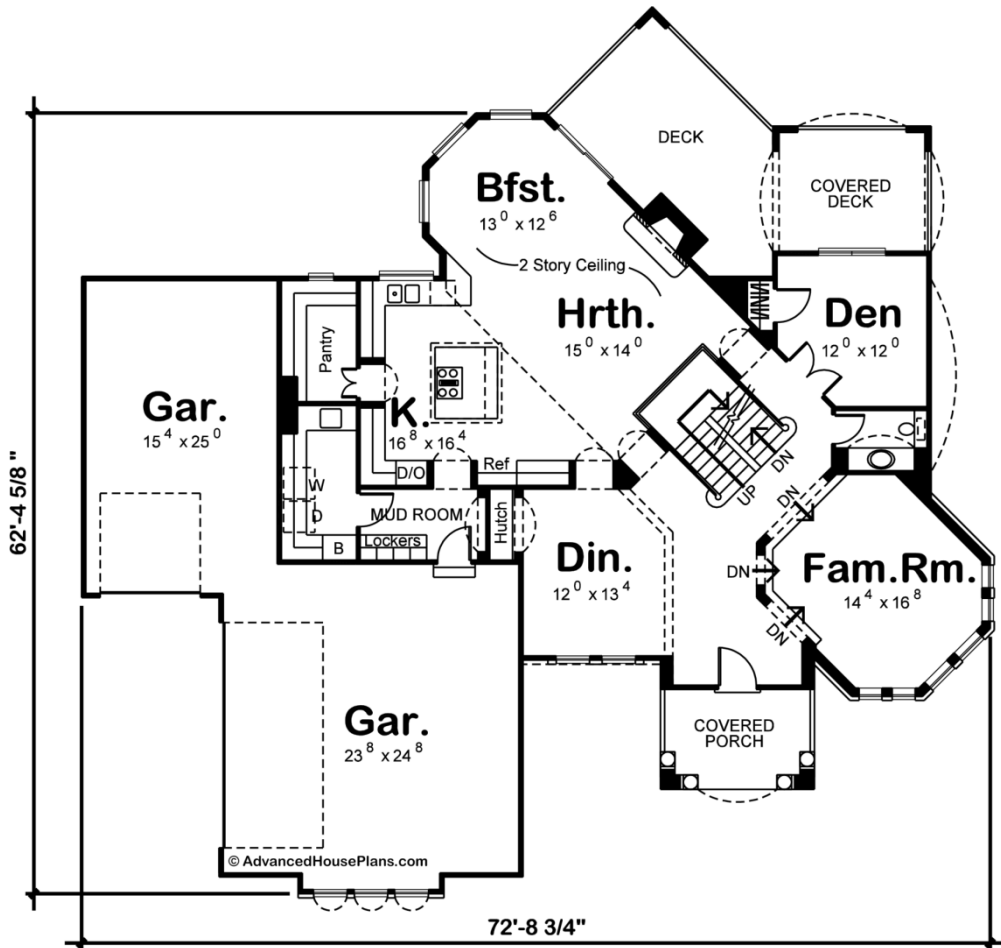
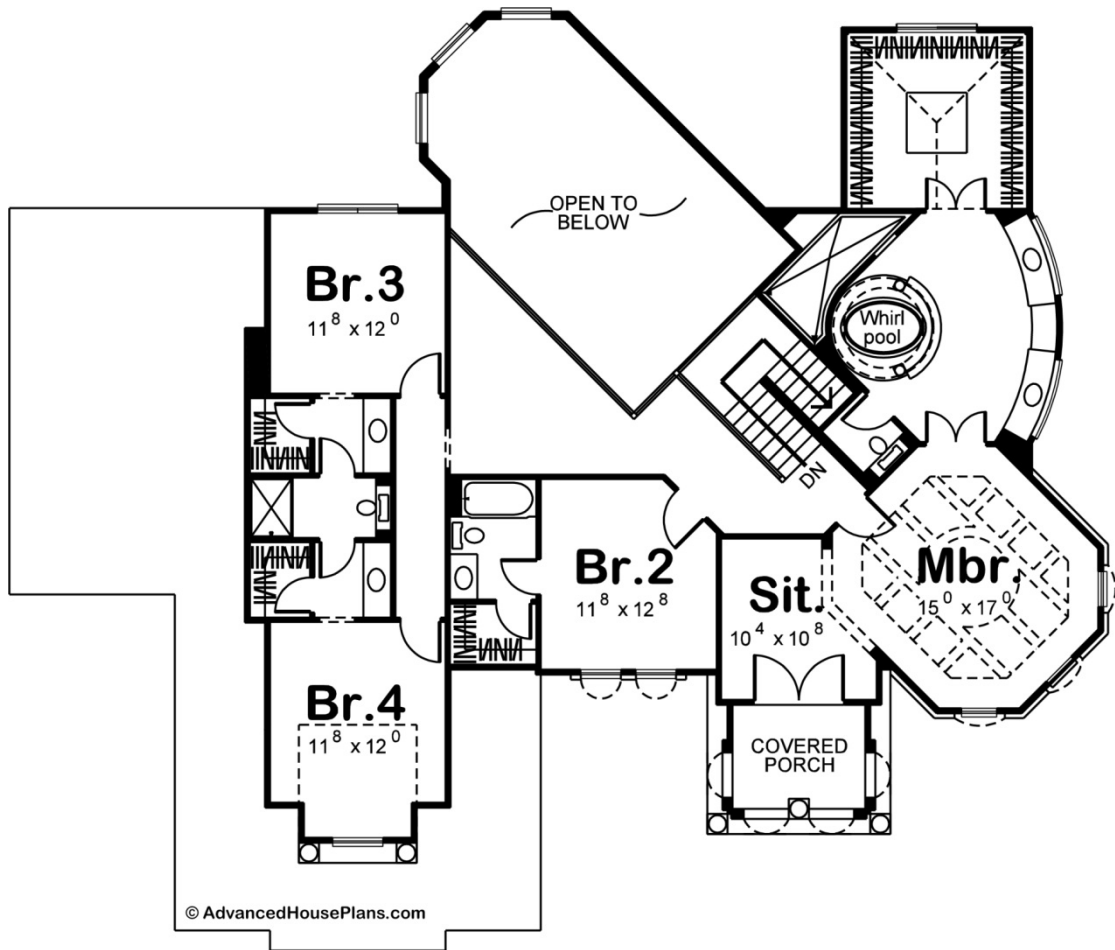




**29246 - Santa Clara Data Sheet**

3086 SQ FT	4 BEDS	4 BATHS	3 BAYS	73' 0" WIDE	63' 0" DEEP
---------------	-----------	------------	-----------	----------------	----------------





## Construction Specs

### Layout

Bedrooms	4
Bathrooms	4
Garage Bays	3

### Square Footage

Main Level	1780 Sq. Ft.
Second Level	1306 Sq. Ft.
Garage	1011 Sq. Ft.
Total Finished Area	3086 Sq. Ft.

### Exterior Dimensions

Width	73' 0"
Depth	63' 0"
Ridge Height	29' 0"
<i>Calculated from main floor line</i>	

### Default Construction Stats

*Stats are unique to the individual plan.*

Foundation Type	Basement
Exterior Wall Construction	2x4
Roof Pitches	6/12
Foundation Wall Height	9'
Main Wall Height	9'
Second Wall Height	9'

## Plan Description

29246 Santa Clara Striking design details abound in this 4-bedroom, 2-story, Mediterranean style house plan. Upon entering the home, guest are treated to views into both the formal dining room, with built-in hutch, and the sunken family room, which is brightened by an array of tall windows. Beyond the family room, a pair of double doors open to the den, which enjoys access to a covered rear deck. Angled away from the den, beyond the staircase, a hearth room and breakfast area reside beneath a 2-story-high ceiling. Entertaining options are greatly expanded where the breakfast area accesses an open rear deck that adjoins the covered deck. The kitchen is a cook's dream, with an abundance of counter space, large island work area and sizeable walk-in pantry. Just off the kitchen lies a mud room with lockers and an adjoining laundry room with ample counter space and soaking sink. The mud room provides passage to and from the home's 3-car garage. Amazing details continue to be found upstairs, where the master suite resides with a sitting room, private covered porch, and sprawling bath area that showcases a soaking tub, his-and-her vanities, large walk-in shower and roomy walk-in closet. Bedroom 2 has a walk-in closet and private bath. Bedrooms 3 and 4 each have walk-in closets and share a Jack-n-Jill bath. advanced house plans