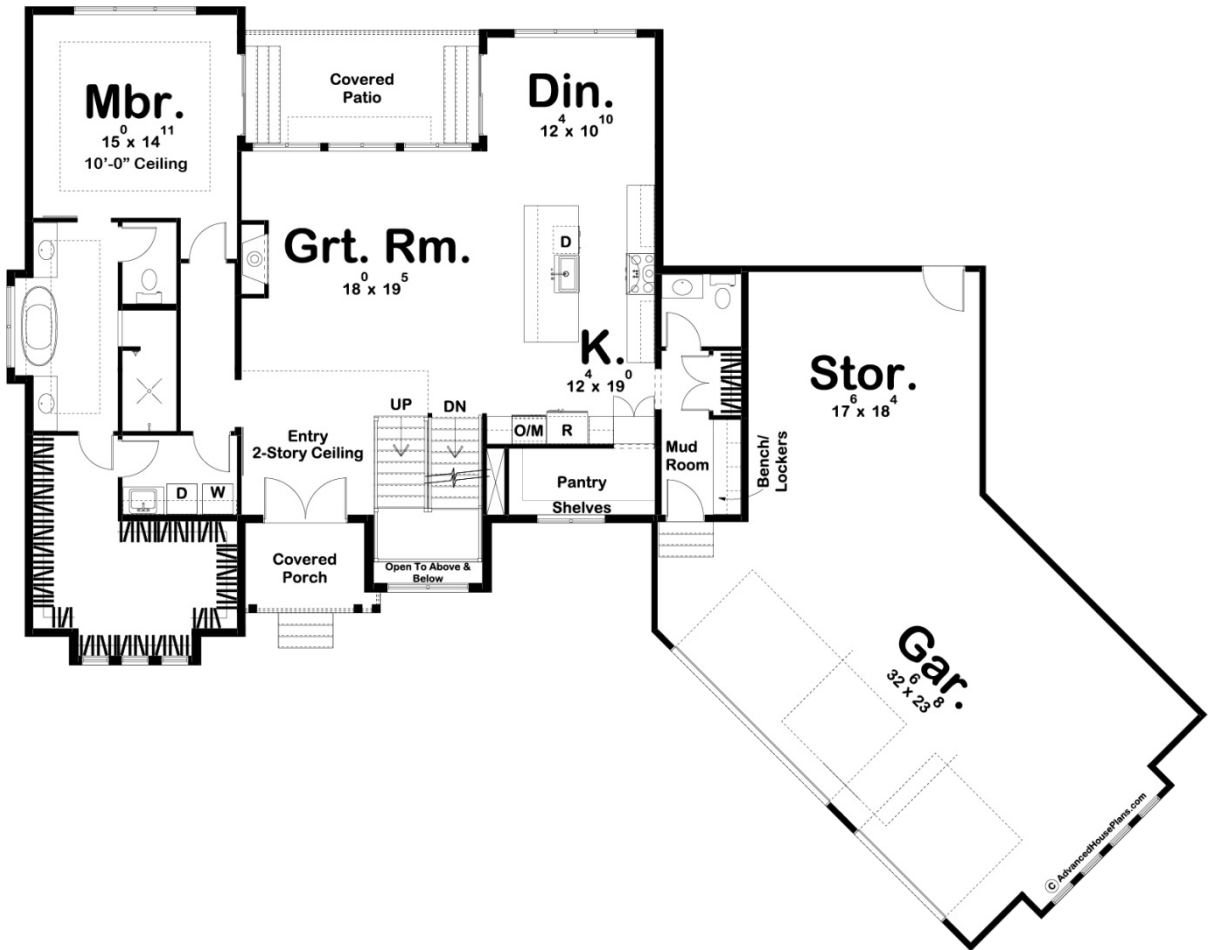
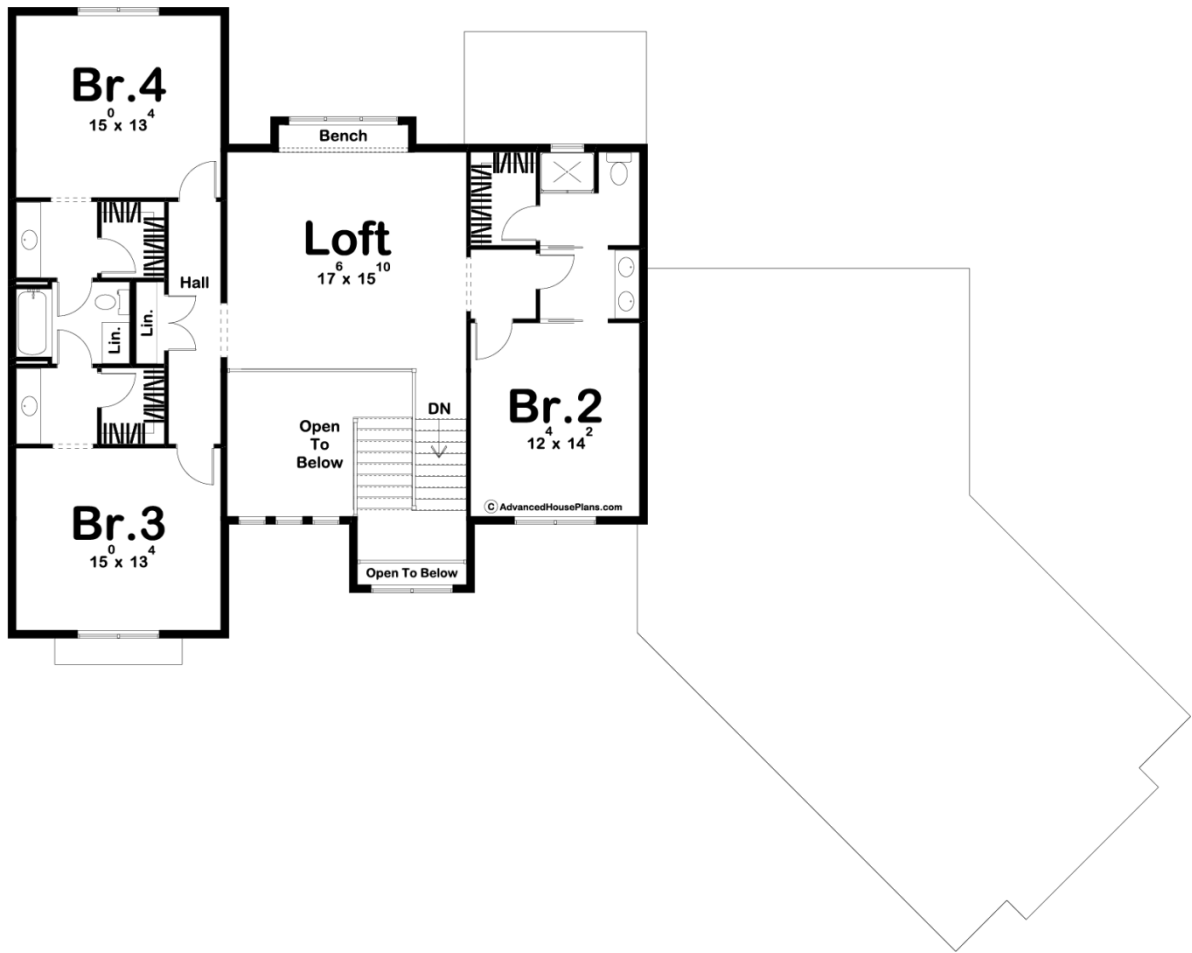




29775 - Savannah Falls Data Sheet

3292 SQ FT	4 BEDS	4 BATHS	3 BAYS	87' 11" WIDE	69' 0" DEEP
---------------	-----------	------------	-----------	-----------------	----------------





Construction Specs

Layout

Bedrooms	4
Bathrooms	4
Garage Bays	3

Square Footage

Main Level	1888 Sq. Ft.
Second Level	1404 Sq. Ft.
Garage	1103 Sq. Ft.
Total Finished Area	3292 Sq. Ft.

Exterior Dimensions

Width	87' 11"
Depth	69' 0"

Default Construction Stats

Stats are unique to the individual plan.

Foundation Type	Basement
-----------------	----------

Exterior Wall Construction	2x4
Roof Pitches	8/12 Primary, 6/12 10/12 Secondary
Foundation Wall Height	9'
Main Wall Height	10'
Second Wall Height	9'

Plan Description

The Savannah Falls plan is a Modern Farmhouse masterpiece. The exterior of this home combines board and batten siding, metal roofing, and stone to give this home the timeless modern farmhouse look. The large angled 3 car garage with storage provides a great place to store your cars and your toys. Once you walk in through the covered porch, you'll find yourself in a grand 2 story entry. The great room is warmed by a fireplace and lets in tons of natural light through the large windows that look out to the covered patio. This home has a wonderful kitchen that includes a massive walk-in pantry and a large island with a snack bar. The master suite on this home is conveniently located on the main level and includes a massive walk-in closet that has access to the laundry room as well as a soaking tub, his/her vanities, a walk-in shower, and an enclosed toilet. Just up the stairs, you will find 3 bedrooms and a wonderful loft space with a built-in bench. Bedroom 2 has access to its own bathroom with dual vanities and a walk-in closet. Bedrooms 3 and 4 share an amazing jack and jill bathroom and each has its own walk-in closet.