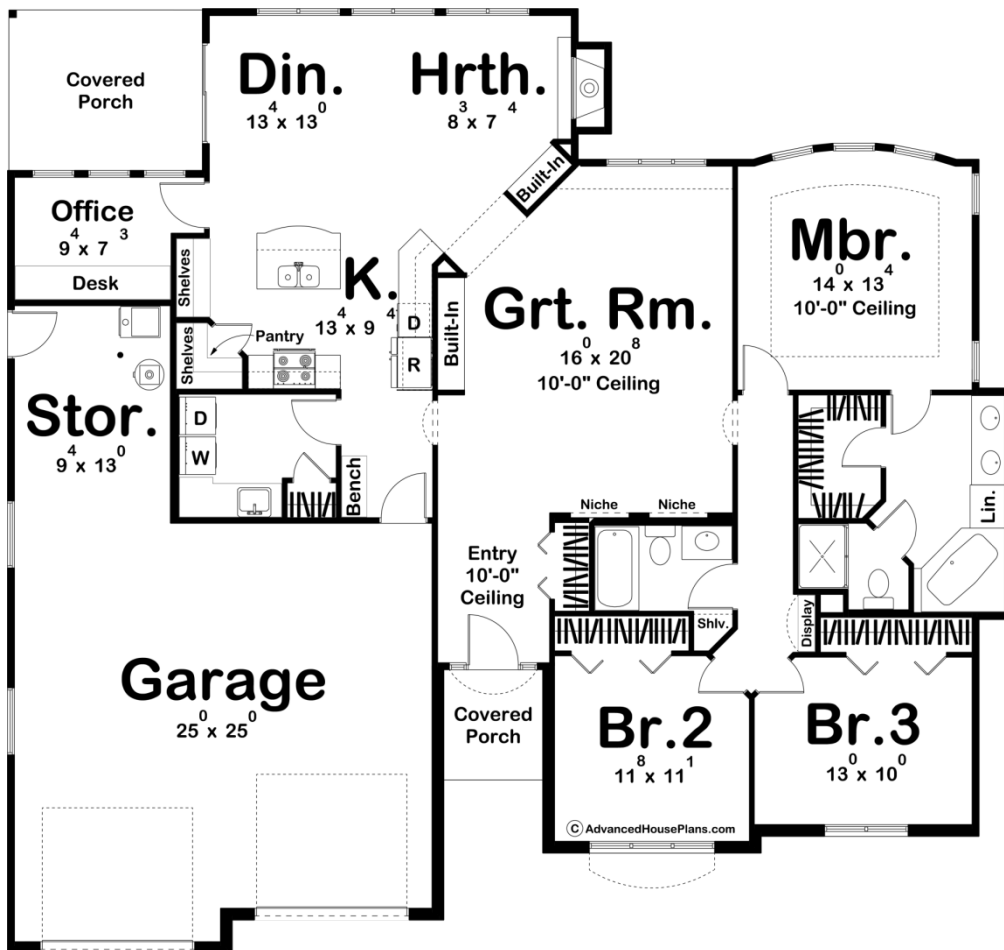




29127 - Sayer Data Sheet

1899 SQ FT	3 BEDS	2 BATHS	2 BAYS	60' 0" WIDE	56' 0" DEEP
---------------	-----------	------------	-----------	----------------	----------------



Construction Specs

Layout

Bedrooms

Bathrooms	2
Garage Bays	2
Square Footage	
Main Level	1899 Sq. Ft.
Garage	748 Sq. Ft.
Total Finished Area	1899 Sq. Ft.
Exterior Dimensions	
Width	60' 0"
Depth	56' 0"
Ridge Height <i>Calculated from main floor line</i>	23' 0"
Default Construction Stats <i>Stats are unique to the individual plan.</i>	
Foundation Type	Slab
Exterior Wall Construction	2x4
Foundation Wall Height	9'
Main Wall Height	9'

Plan Description

The Sayer plan is a stunning home that combines elements of many styles into a traditional style facade. A combination of traditional siding, brick, and wood accents gives this home excellent curb appeal. Just inside the front covered porch, you'll find yourself inside the entrance looking at the wide-open great room. There is a wonderful hearth room with a fireplace that flows with the dining room and kitchen. The kitchen includes a walk-in pantry, an island with a snack bar, and a pocket office with a built-in desk. On the right side of the home, the master suite includes a decorative trayed ceiling, his/her vanities, a corner soaking tub, an enclosed toilet area, and a walk-in closet. Bedrooms 2 and 3 share a centrally located hall bathroom with the main living spaces. The home's oversized 2 car garage has a large storage area and accesses the home through a convenient mudroom with a bench and coat closet.