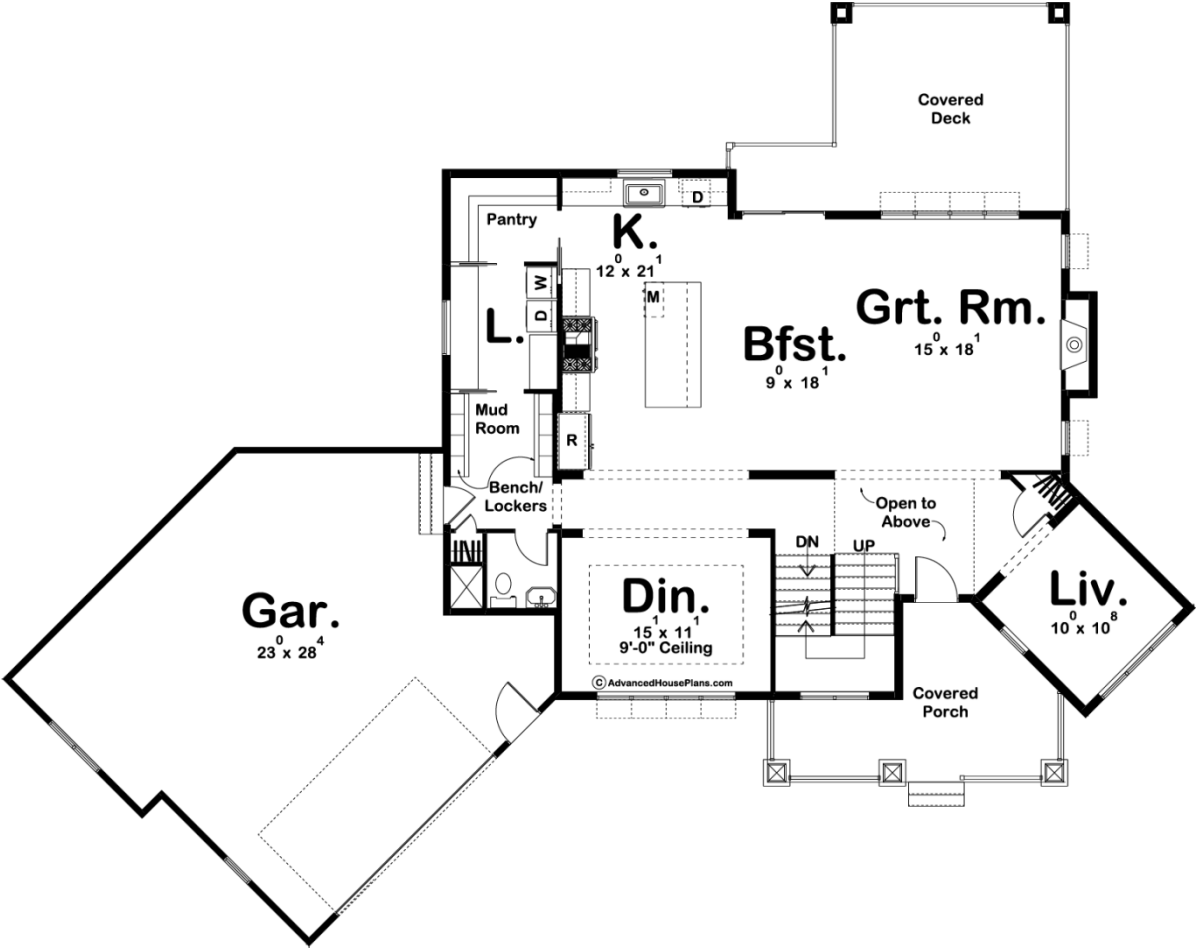
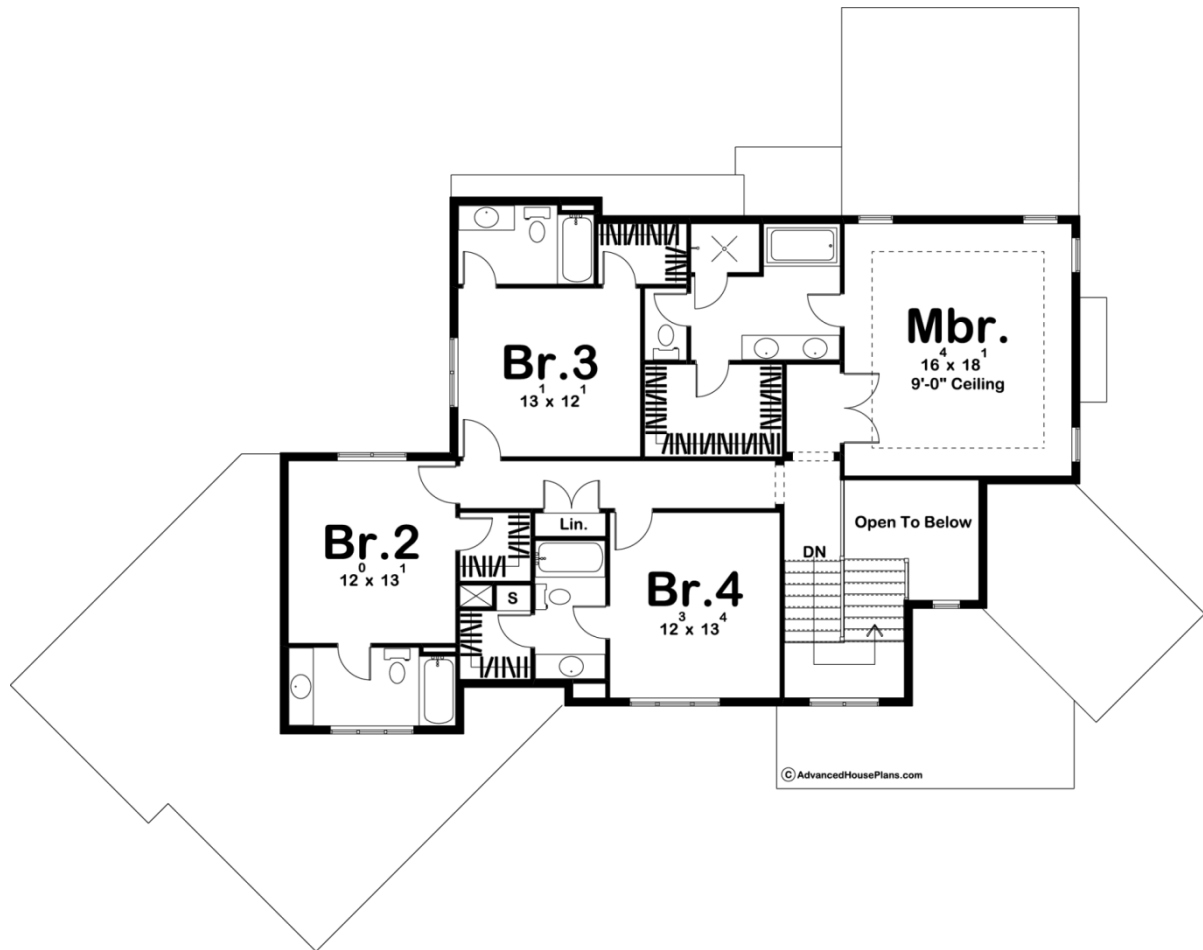




29520 - Shadow Creek Data Sheet

3120 SQ FT	4 BEDS	5 BATHS	2 BAYS	86' 0" WIDE	68' 0" DEEP
---------------	-----------	------------	-----------	----------------	----------------





© AdvancedHousePlans.com

## Construction Specs

### Layout

Bedrooms	4
Bathrooms	5
Garage Bays	2

### Square Footage

Main Level	1610 Sq. Ft.
Second Level	1510 Sq. Ft.
Garage	814 Sq. Ft.
Total Finished Area	3120 Sq. Ft.

### Exterior Dimensions

Width	86' 0"
Depth	68' 0"
Ridge Height	33' 0"
<i>Calculated from main floor line</i>	

**Default Construction Stats**  
*Stats are unique to the individual plan.*

Foundation Type	Basement
Exterior Wall Construction	2x4
Roof Pitches	Primary 6/12, Secondary 4/12
Foundation Wall Height	9'
Main Wall Height	9'
Second Wall Height	8'

**Plan Description**

29520 | Shadow CreekThis 2-story, Modern Farmhouse plan is highlighted on the exterior by front and back porches and board and batten siding. Inside, immediate impressions are made by a wide open floorplan and a great room with a fireplace. The kitchen, with a beautiful work island, includes a large walk-in pantry.Upstairs you will find the master suite which includes a master bathroom with a compartmented toilet, walk-in shower, and a large walk-in closet. Bedrooms 2, 3, and 4 each have their own bathroom and walk-in closet.Back on the main level, the generously proportioned 2-car garage includes ample space for a workshop. It accesses the home through a mudroom, complete with bench, lockers and a coat closet.As always any Advanced House Plans home plan can be customized to fit your needs with our alteration department. Whether you need to add another garage stall, change the front elevation, stretch the home larger or just make the home plan more affordable for your budget we can do that and more for you at Ahp.