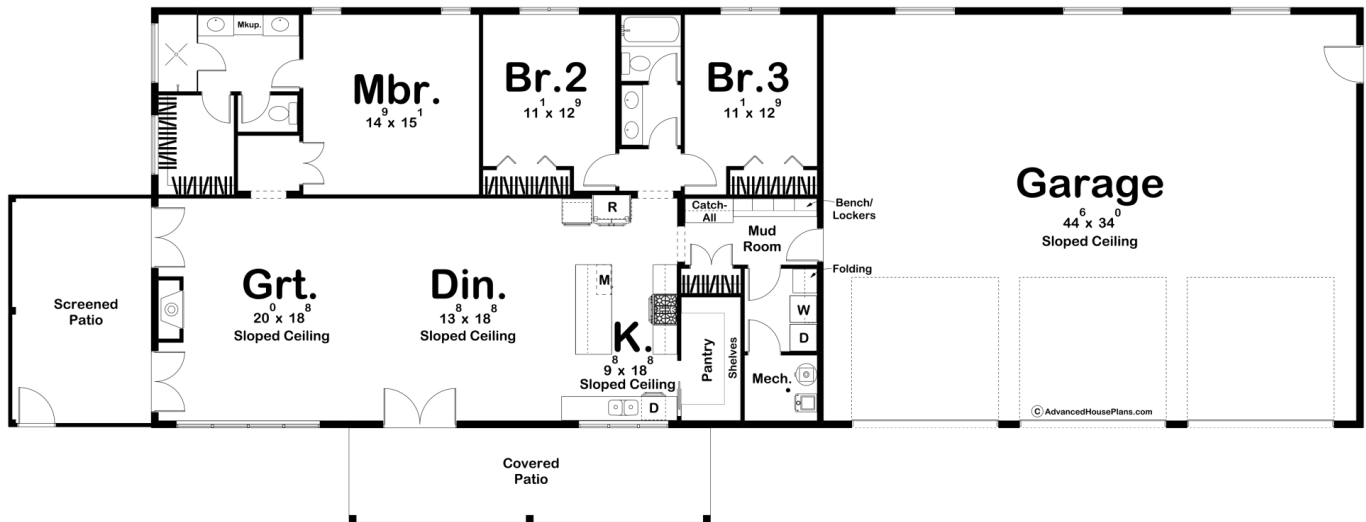




30300 - Shreveport Data Sheet

1927 SQ FT	3 BEDS	2 BATHS	3 BAYS	113' 0" WIDE	43' 0" DEEP
---------------	-----------	------------	-----------	-----------------	----------------



Construction Specs

Layout

Bedrooms

Bathrooms	2
Garage Bays	3

Square Footage

Main Level	1927 Sq. Ft.
Covered Area	474 Sq. Ft.
Garage	1575 Sq. Ft.
Total Finished Area	1927 Sq. Ft.

Exterior Dimensions

Width	113' 0"
Depth	43' 0"
Ridge Height <i>Calculated from main floor line</i>	19' 3"

Default Construction Stats

Stats are unique to the individual plan.

Foundation Type	Slab
Exterior Wall Construction	2x6
Roof Pitches	Primary 2/12, Secondary 4/12
Main Wall Height	12'

Plan Description

This modern barndominium has a touch that makes the home not only feel luxurious, but also comfortable. As soon as you step in through the large three car garage, you're greeted by a beautiful mudroom and a great open space for gathering with the family. The kitchen features a walk-in pantry and a wide space with a view straight to the great room, leaving no guest unnoticed. There are three bedrooms in the Shreveport plan. Two share a hall bath, and the other with a large double vanity, walk-in shower, and walk-in closet. Step outside onto the screened patio for more entertaining and relaxing space. This barndominium is unlike any other.