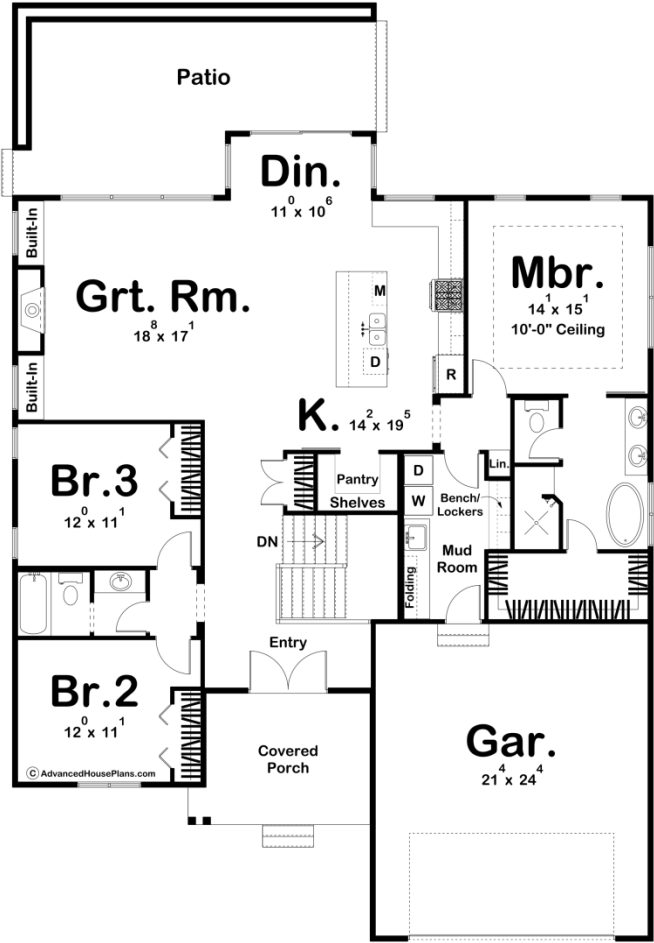




30126 - Skidmore Farm Data Sheet

1986 SQ FT	3 BEDS	2 BATHS	2 BAYS	50' 0" WIDE	73' 0" DEEP
---------------	-----------	------------	-----------	----------------	----------------



Construction Specs

Layout

Bedrooms

Bathrooms	2
Garage Bays	2
Square Footage	
Main Level	1986 Sq. Ft.
Covered Area	330 Sq. Ft.
Garage	546 Sq. Ft.
Total Finished Area	1986 Sq. Ft.
Exterior Dimensions	
Width	50' 0"
Depth	73' 0"
Default Construction Stats <i>Stats are unique to the individual plan.</i>	
Foundation Type	Basement
Exterior Wall Construction	2x4
Roof Pitches	8/12 Primary, 10/12 Secondary
Foundation Wall Height	9'
Main Wall Height	9'

Plan Description

The Skidmore Farm is an affordable, beautiful Modern Farmhouse plan. The exterior showcases white board and batten siding, a wood garage door, and a metal roof over the front porch. The interior features an open floor plan. The kitchen is a dream for anyone who loves to cook at home with its large island, walk-in pantry, and ample counter space. The great room is warmed by a fireplace that is flanked by built-in bookshelves and allows in plenty of natural light from its large windows. The dining room leads out to a large patio that has built-in planter boxes. On the right side of the home, you'll find an amazing master suite that features a bathroom with his/her vanities, a soaking tub, a walk-in shower, and a large walk-in closet. On the opposite side of the home, you'll find 2 bedrooms that share a centrally located hall bathroom. The 2-car garage accesses the home through a convenient mudroom that includes a bench and lockers.