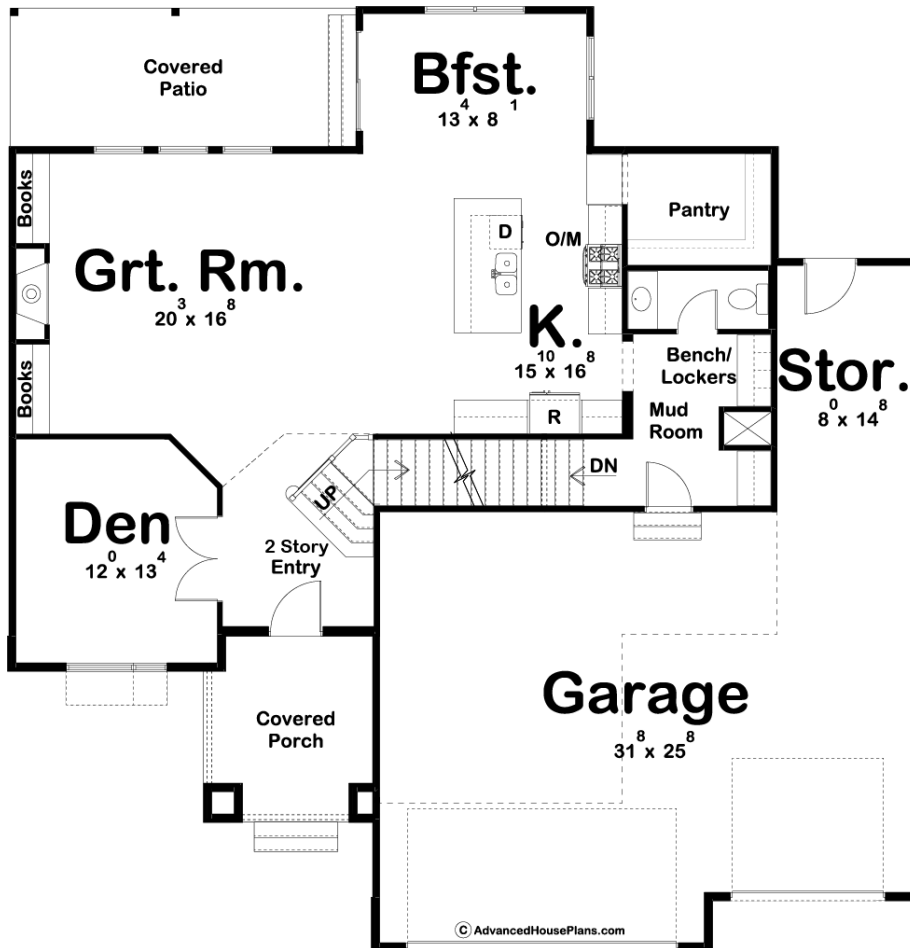
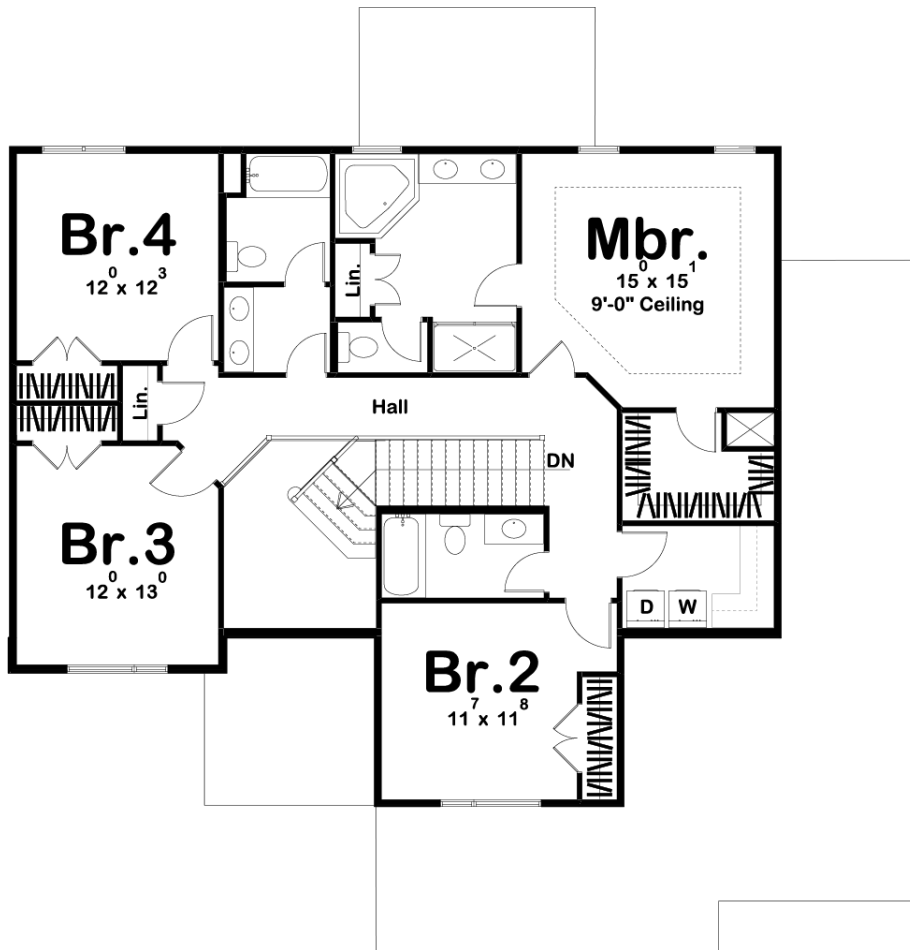




29793 - Snodgrass Data Sheet

2655 SQ FT	4 BEDS	4 BATHS	3 BAYS	54' 0" WIDE	56' 0" DEEP
---------------	-----------	------------	-----------	----------------	----------------





Construction Specs

Layout

Bedrooms	4
Bathrooms	4
Garage Bays	3

Square Footage

Main Level	1293 Sq. Ft.
Second Level	1362 Sq. Ft.
Garage	927 Sq. Ft.
Total Finished Area	2655 Sq. Ft.

Exterior Dimensions

Width	54' 0"
Depth	56' 0"
Ridge Height	30' 0"
<i>Calculated from main floor line</i>	

Default Construction Stats

Stats are unique to the individual plan.

Foundation Type	Basement
Exterior Wall Construction	2x4
Roof Pitches	4/12 Primary
Foundation Wall Height	9'
Main Wall Height	10'
Second Wall Height	8'

Plan Description

The Snodgrass is a 2 story Modern Prairie-style masterpiece! Along with a gorgeous facade, this house plan has many great Family-Centered features that make this an excellent plan for builders and homeowners alike. This house plan is designed with deep overhangs and a contemporary nod to the famous prairie-style home. The elevation combines the use of stone, stucco, and cedar to give it an ultra-modern look. The main floor features a well-designed kitchen with walk-in pantry, den, and covered patio out back. The second floor features a generously-sized master suite, with tray ceiling, walk-in shower, and large walk-in closet. Bedrooms 3 and 4 share a central hall bath and bedroom 2 has its own bath. Back on the main level, the 3 car garage accesses the home through a convenient mudroom complete with bench/lockers.