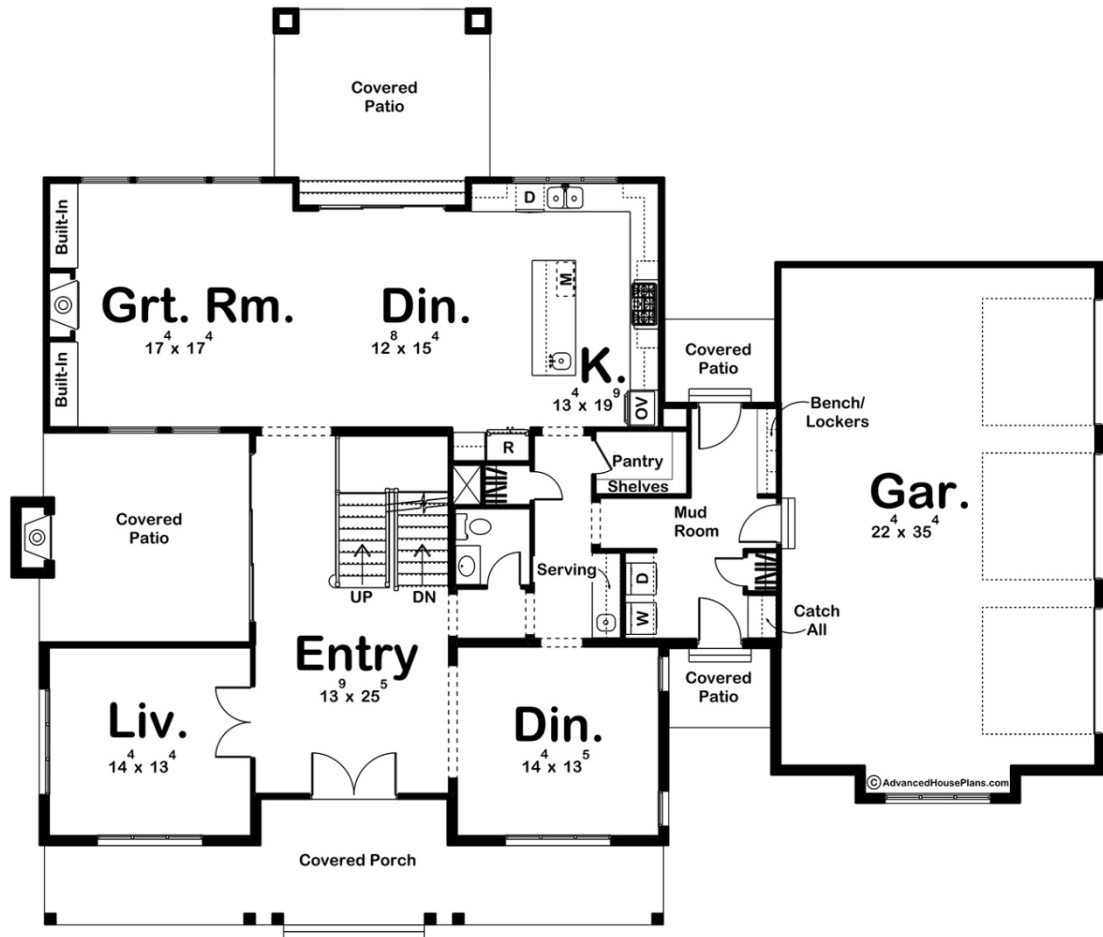
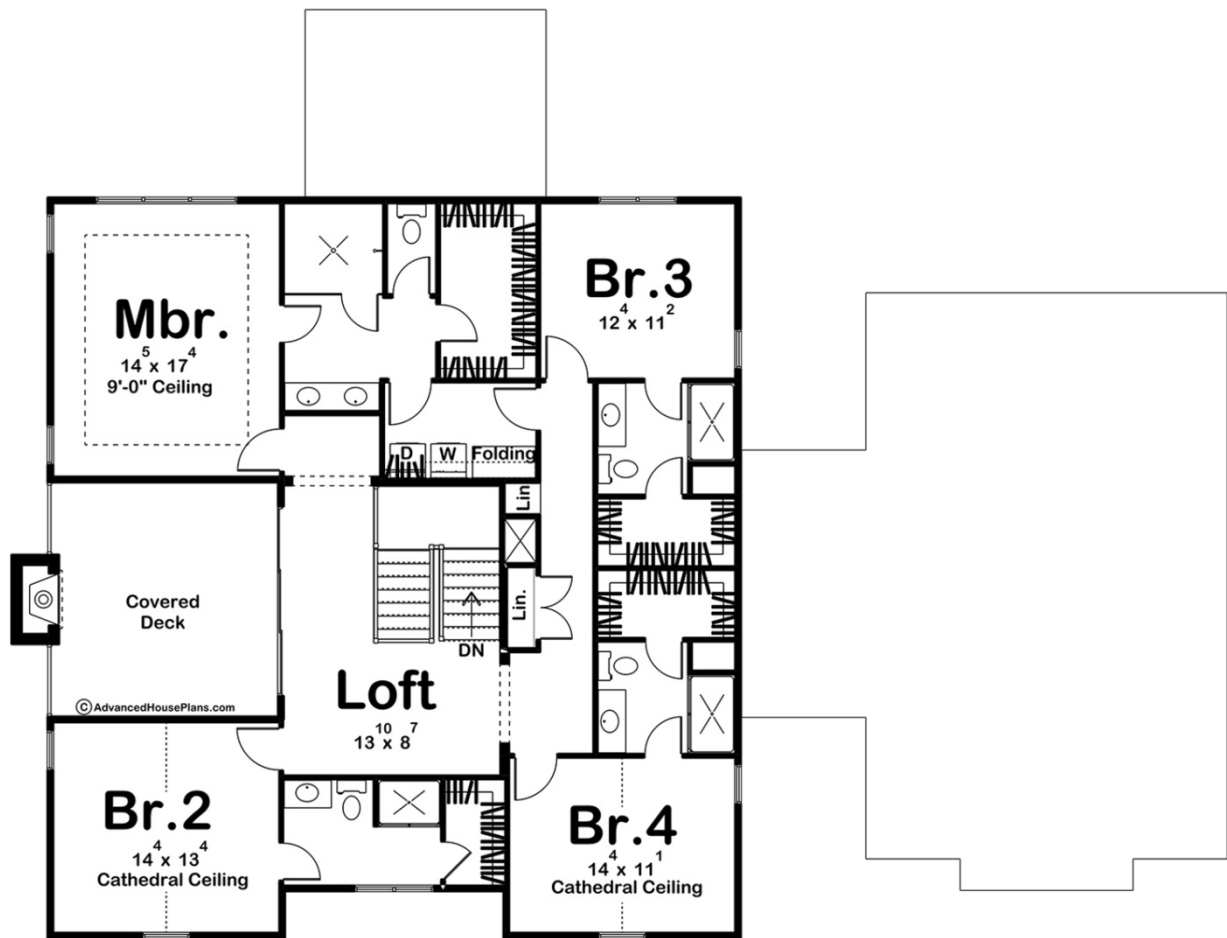




30177 - Southbend Data Sheet

3748 SQ FT	4 BEDS	5 BATHS	3 BAYS	77' 8" WIDE	65' 0" DEEP
---------------	-----------	------------	-----------	----------------	----------------





Construction Specs

Layout

Bedrooms	4
Bathrooms	5
Garage Bays	3

Square Footage

Main Level	1924 Sq. Ft.
Second Level	1824 Sq. Ft.
Garage	848 Sq. Ft.
Total Finished Area	3748 Sq. Ft.

Exterior Dimensions

Width	77' 8"
Depth	65' 0"
Ridge Height	35' 0"
<i>Calculated from main floor line</i>	

Default Construction Stats

Stats are unique to the individual plan.

Foundation Type	Basement
Exterior Wall Construction	2x4
Roof Pitches	8/12 Primary, 12/12 4/12 Secondaries
Foundation Wall Height	9'
Main Wall Height	10'
Second Wall Height	8'

Plan Description

The Southbend is a stunning 2-story modern farmhouse plan. The exterior combines board and batten siding with wood accents, brick, and metal roofing to give the home wonderful curb appeal. A large front covered porch invites guests into the home. One step through a set of french doors, and you'll find yourself in the home's entry. To the left of the entryway, you'll find a formal living room. To the right of the entryway, you'll find a large formal dining room with access to the kitchen through a hallway with a serving area. The kitchen, a second dining area, and the great room are arranged in a wide-open layout. The kitchen includes a large island with a microwave, a snack bar, and a prep sink. A large walk-in pantry is situated out of sight behind the kitchen. The great room is warmed by a fireplace flanked by built-in bookshelves. A triple glass sliding door leads to the rear covered patio from the dining area. The second floor is where you will find all of your bedrooms. The master suite includes a bedroom that lies under a decorative trayed ceiling. The master bathroom has a massive walk-in shower, a walk-in closet, and his/her vanities. The master bathroom also includes access to the laundry room. Bedrooms 2, 3, and 4 all have access to their very own bathroom and walk-in closet. A convenient loft creates a great place for the kids to play. The loft opens up to a covered deck through a triple glass sliding door. Back on the main floor, the home's side-load 3-car garage accesses the home through a convenient mud room that includes a bench and lockers.