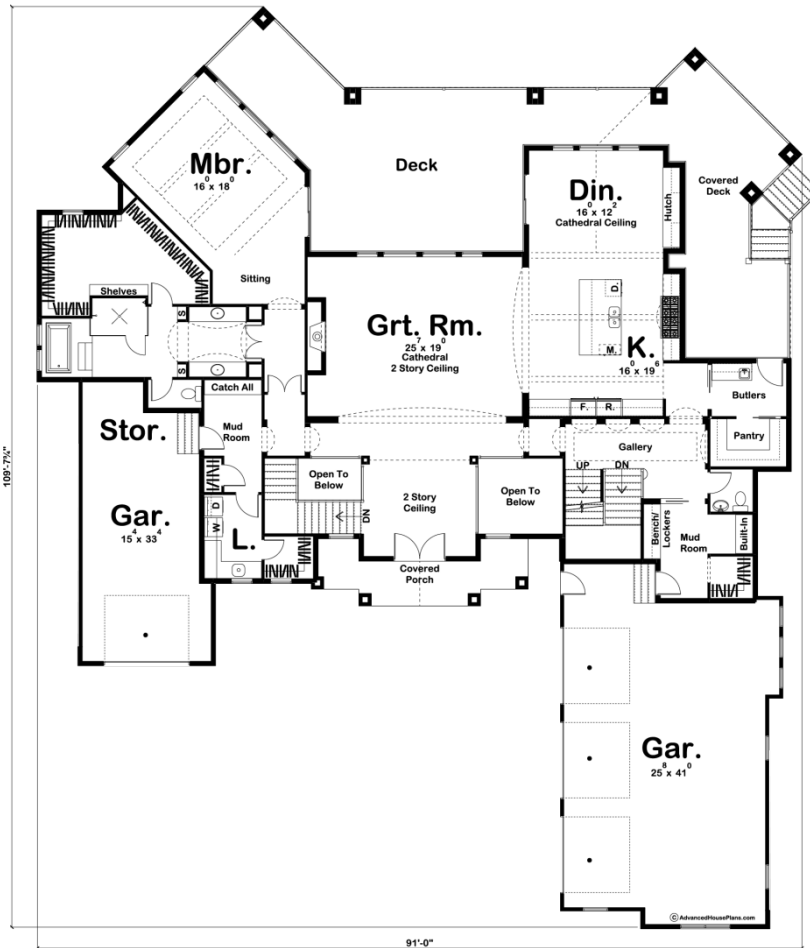
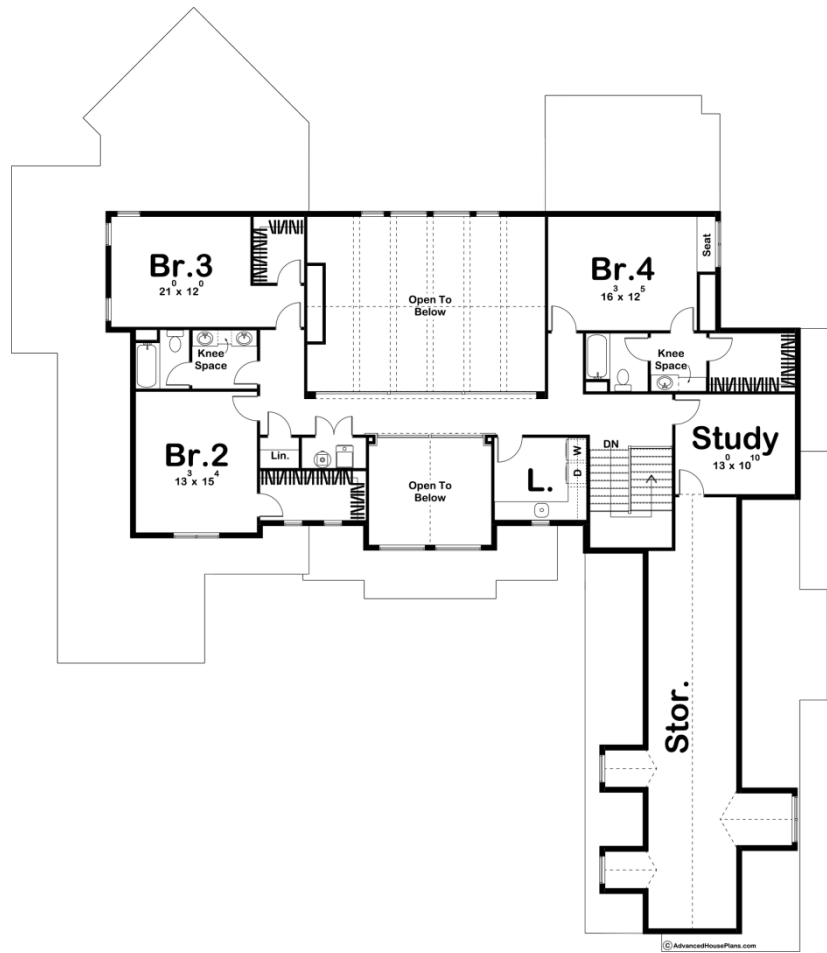




29527 - Southdale Data Sheet

4910 SQ FT	4 BEDS	4 BATHS	4 BAYS	91' 0" WIDE	110' 0" DEEP
---------------	-----------	------------	-----------	----------------	-----------------





Construction Specs

Layout

Bedrooms	4
Bathrooms	4
Garage Bays	4

Square Footage

Main Level	3290 Sq. Ft.
Second Level	1620 Sq. Ft.
Garage	1454 Sq. Ft.
Total Finished Area	4910 Sq. Ft.

Exterior Dimensions

Width	91' 0"
Depth	110' 0"
Ridge Height	35' 0"

Calculated from main floor line

Default Construction Stats

Stats are unique to the individual plan.

Foundation Type	Basement
Exterior Wall Construction	2x4
Roof Pitches	12/12 S-S, 8/12 F-B
Foundation Wall Height	10'
Main Wall Height	10'
Second Wall Height	8'

Plan Description

Classic Craftsman accents enhance the curb appeal of this remarkable 1.5-story house plan. As you enter through the grand entry, guests are treated to stunning views of a 2 story cathedral ceiling in the great room with a fireplace. The great room flows into a large open kitchen and dining room with a cathedral ceiling. The angled master suite enjoys seclusion from the main floor's living areas. Its bath area includes his and her vanities with a massive walk in closet and a walk in shower. This home is perfect for entertaining large groups with its huge deck area. On the upper level, you will find a study which leads to storage that spans above a 3 car garage. Next to the study is bedroom 4 which has its own bathroom and walk-in closet. As you walk across the catwalk you will have excellent views below to the great room and grand entrance on the way to bedroom 2 and 3. Bedroom 2 and 3 share a bathroom and each has a walk-in closet.