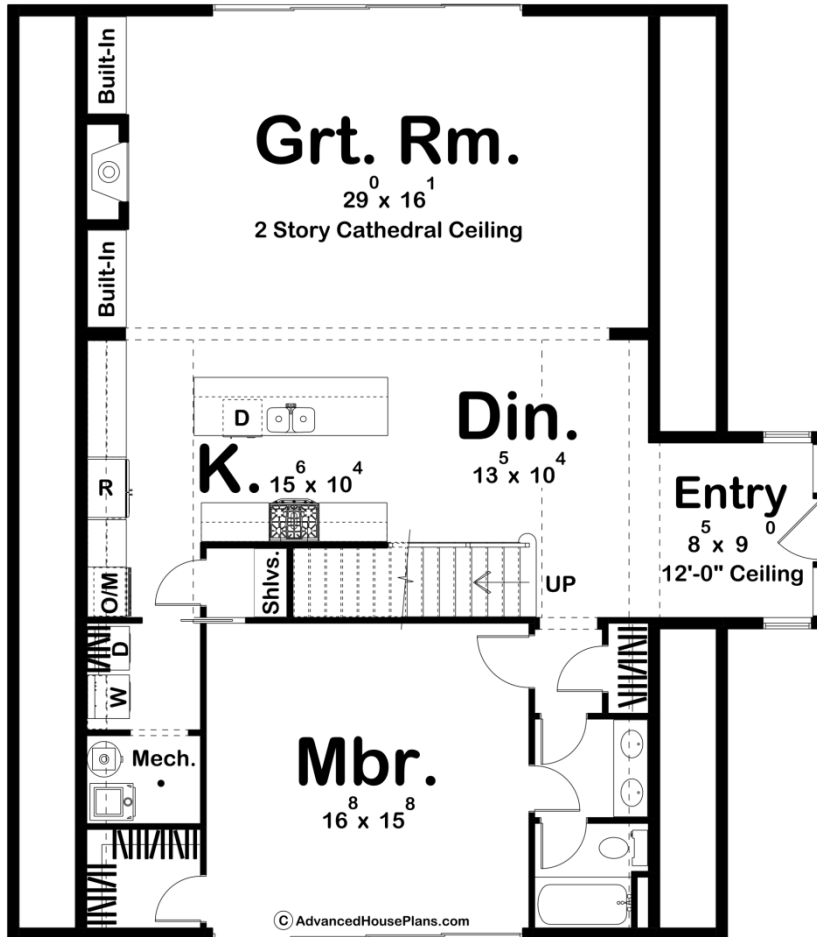
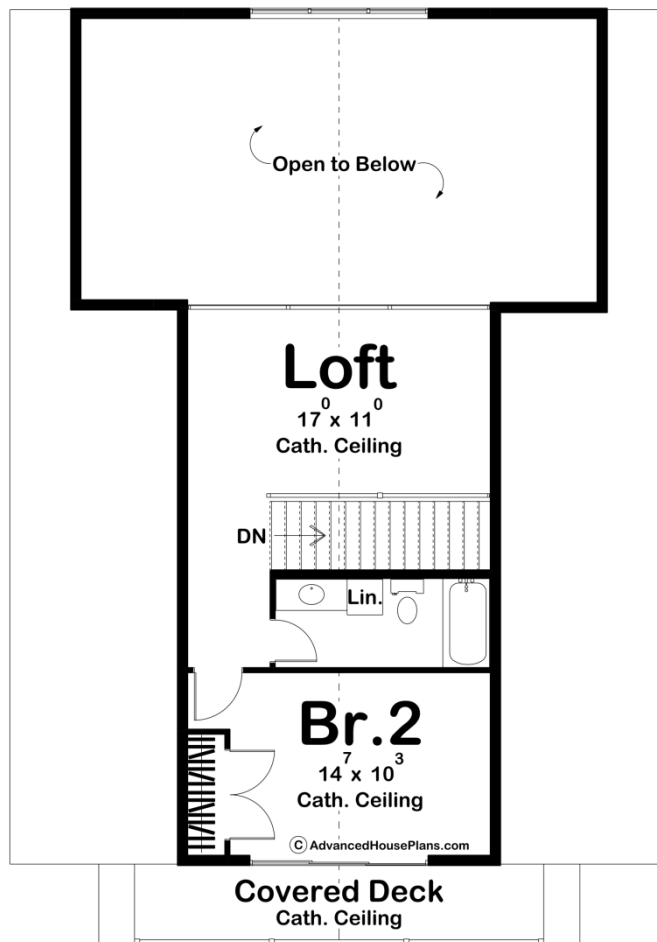




**30170 - Spearfish Data Sheet**

2007 SQ FT	2 BEDS	2 BATHS	0 BAYS	42' 0" WIDE	48' 0" DEEP
---------------	-----------	------------	-----------	----------------	----------------





## Construction Specs

### Layout

Bedrooms	2
Bathrooms	2

### Square Footage

Main Level	1498 Sq. Ft.
Second Level	509 Sq. Ft.
Total Finished Area	2007 Sq. Ft.

### Exterior Dimensions

Width	42' 0"
Depth	48' 0"
Ridge Height <i>Calculated from main floor line</i>	34' 0"

### Default Construction Stats

*Stats are unique to the individual plan.*

Foundation Type	Slab
-----------------	------

Exterior Wall Construction	2x6
Main Wall Height	9'
Second Wall Height	8'

## Plan Description

The Spearfish plan is a stunning Modern A-Frame Cabin Plan. The exterior is sure to impress with its cedar siding and large metal roof. One step inside the home and you'll be impressed with the open layout. The kitchen includes a pantry, a large island with a snack bar, and ample counter space. The great room lies under a soaring 2 story cathedral ceiling and is warmed by a fireplace that is flanked by built-in bookshelves. A large quad sliding glass door leads from the great room to the rear of the home. The master suite is conveniently located on the main floor and includes its own large quad sliding glass door to the front of the home. The master bathroom includes his/her vanities. The second floor adds an additional bedroom and a wonderful loft area. The bedroom feels huge with its tall cathedral ceiling.