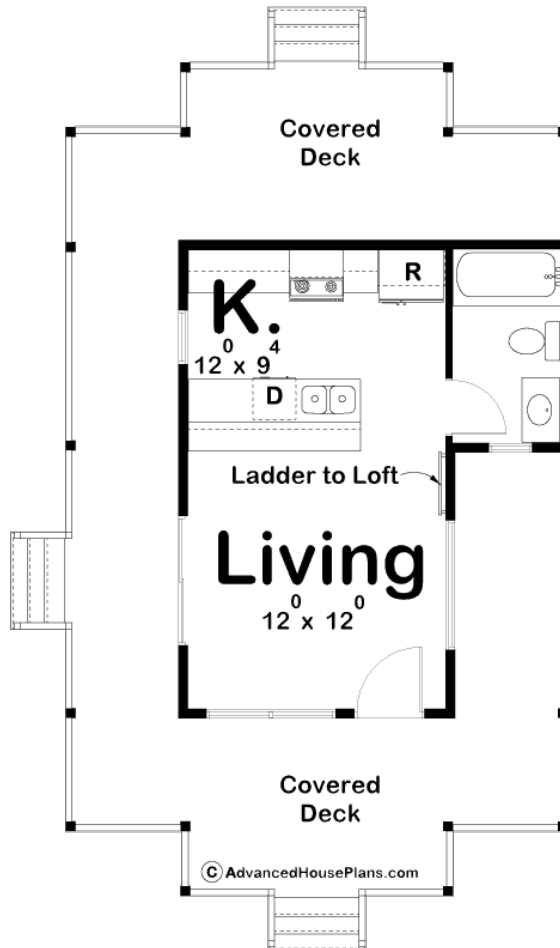
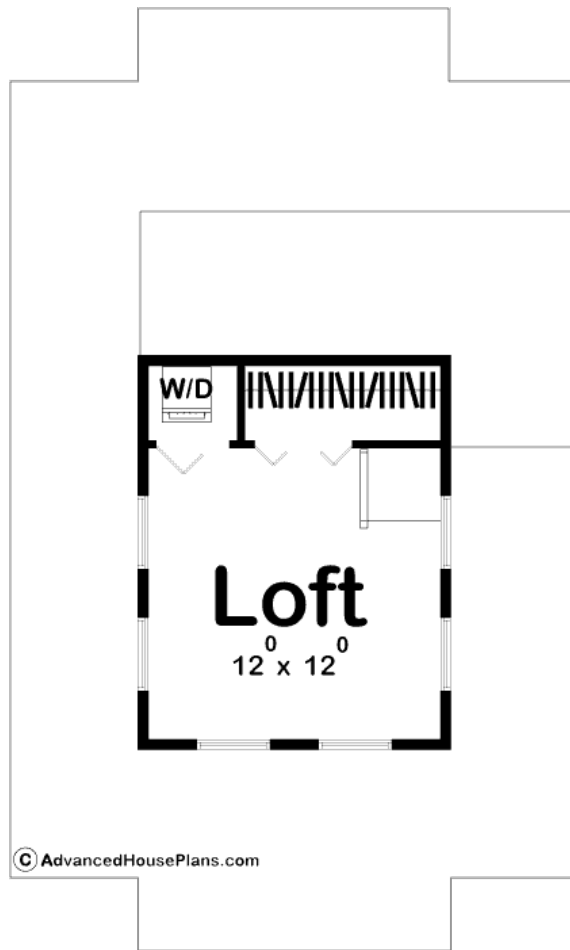




### 29313 - St Thomas Data Sheet

533 SQ FT	1 BEDS	1 BATHS	0 BAYS	24' 0" WIDE	39' 0" DEEP
--------------	-----------	------------	-----------	----------------	----------------





## Construction Specs

### Layout

Bedrooms	1
Bathrooms	1

### Square Footage

Main Level	330 Sq. Ft.
Second Level	203 Sq. Ft.
Total Finished Area	533 Sq. Ft.

### Exterior Dimensions

Width	24' 0"
Depth	39' 0"
Ridge Height <i>Calculated from main floor line</i>	18' 0"

### Default Construction Stats

*Stats are unique to the individual plan.*

Foundation Type	Crawlspace
-----------------	------------

Exterior Wall Construction	2x4
Roof Pitches	4/12
Main Wall Height	9'
Second Wall Height	8'

## Plan Description

St. Thomas is a beach lover's dream! This compact tiny house plan is perfect for the minimalist looking to take advantage of beautiful property with a full wraparound deck and lots of windows for excellent views, daylighting, and natural ventilation. This plan would also make a fantastic cabin - resort owners and property developers take note! The main level of the floor plan has a modest living area with an efficient, functional kitchen with full fridge, range, microwave, dishwasher and raised bar. The second level loft is accessed by a ship ladder and has just enough room for a queen-size bed. There's also plenty of closet space for every color and style of beachwear!