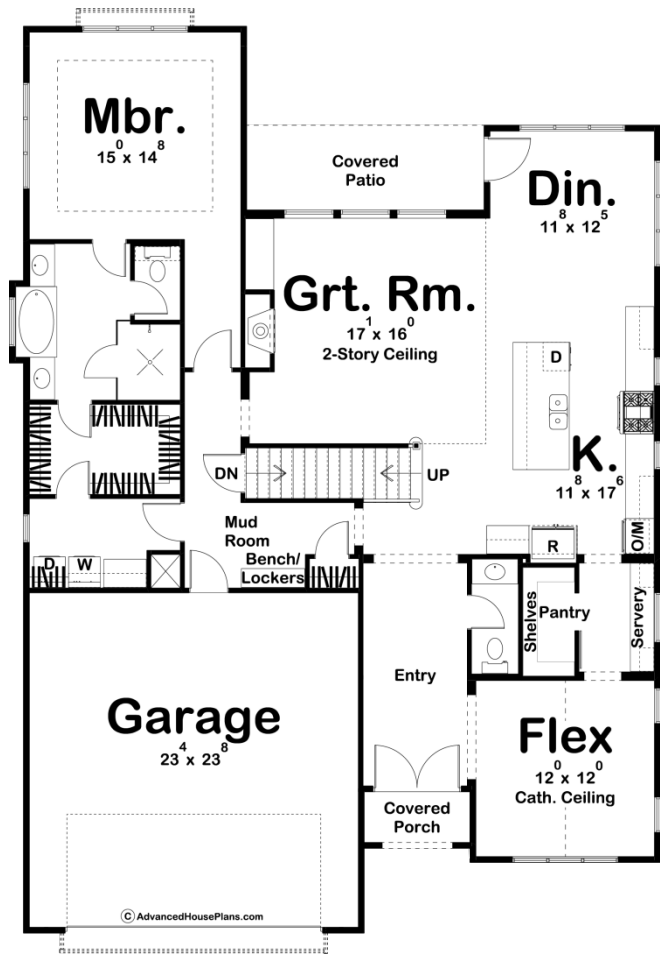
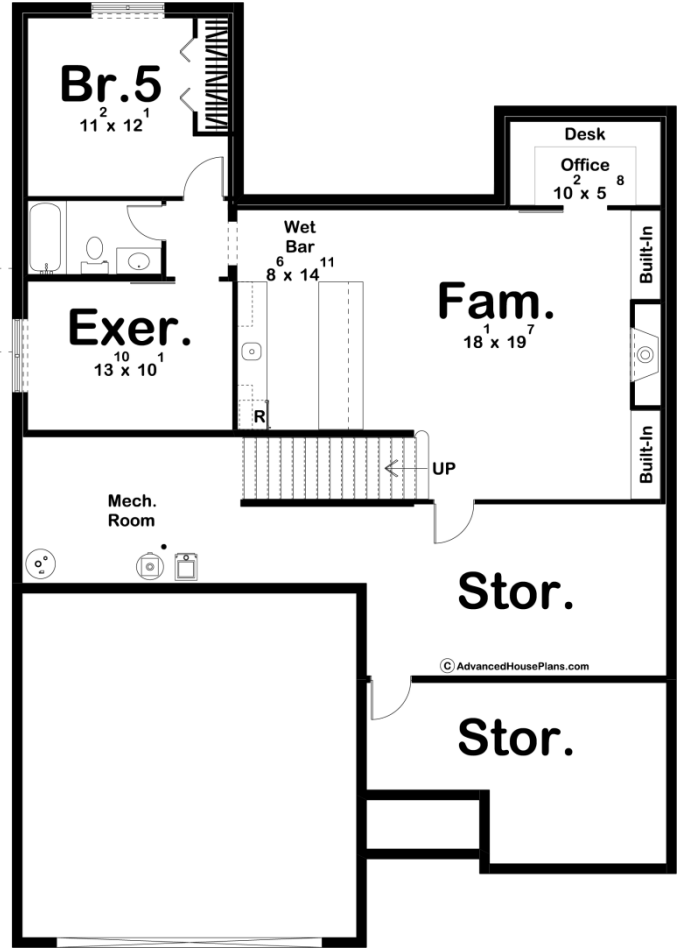
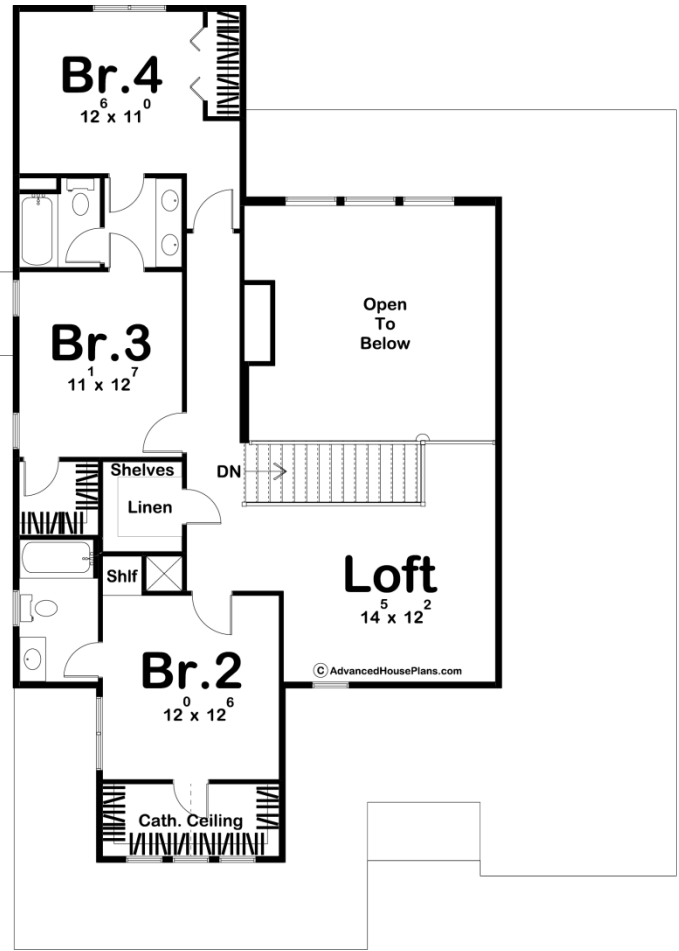




**29859 - Stockton Data Sheet**

|               |           |            |           |                |                |
|---------------|-----------|------------|-----------|----------------|----------------|
| 2983<br>SQ FT | 4<br>BEDS | 4<br>BATHS | 2<br>BAYS | 46' 0"<br>WIDE | 64' 0"<br>DEEP |
|---------------|-----------|------------|-----------|----------------|----------------|





Construction Specs

## Layout

|             |   |
|-------------|---|
| Bedrooms    | 4 |
| Bathrooms   | 4 |
| Garage Bays | 2 |

## Square Footage

|                     |              |
|---------------------|--------------|
| Main Level          | 1864 Sq. Ft. |
| Second Level        | 1119 Sq. Ft. |
| Garage              | 571 Sq. Ft.  |
| Total Finished Area | 2983 Sq. Ft. |

## Exterior Dimensions

|  |        |
|--|--------|
| Width  | 46' 0" |
| Depth  | 64' 0" |
| Ridge Height<br><i>Calculated from main floor line</i> | 27' 1" |

## Default Construction Stats

*Stats are unique to the individual plan.*

|                            |              |
|----------------------------|--------------|
| Foundation Type            | Basement     |
| Exterior Wall Construction | 2x4          |
| Roof Pitches               | 6/12 Primary |
| Foundation Wall Height     | 9'           |
| Main Wall Height           | 9'           |
| Second Wall Height         | 8'           |

## Plan Description

The Stockton plan combines the timeless farmhouse look with the contemporary style. The outside is highlighted by contrasting siding and a large glass garage door. Just inside the home, you'll find a great flex room that would be great for an office or a formal dining room. The flex room accesses the kitchen through a hallway that includes the large walk-in pantry and server. The kitchen includes a large island and looks out into the great room. The great room is warmed by a soaring fireplace and lies under a 2 story ceiling. The dining room accesses the rear patio for your outdoor entertainment. On the left side of the main floor, you'll find the amazing master suite. The master bedroom lies under a tray ceiling and includes a soaking tub, his/her vanities, and enclosed toilet area, and a walk-in closet that conveniently accesses the laundry room. On the second floor, there are 3 bedrooms. Bedrooms 3 and 4 share a jack and jill bathroom while bedroom 2 has access to its own bathroom. A wonderful loft area makes a great play space for kids. An optional finished basement adds 1067 sq ft and includes a large family room with a fireplace, an exercise room, an additional bedroom, a pocket office, and ample storage space.