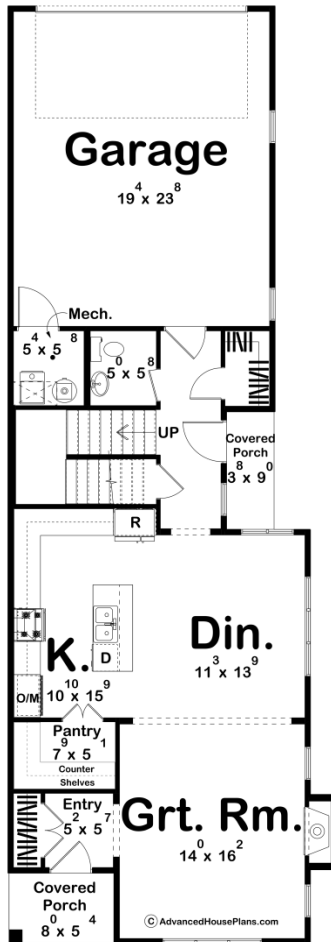
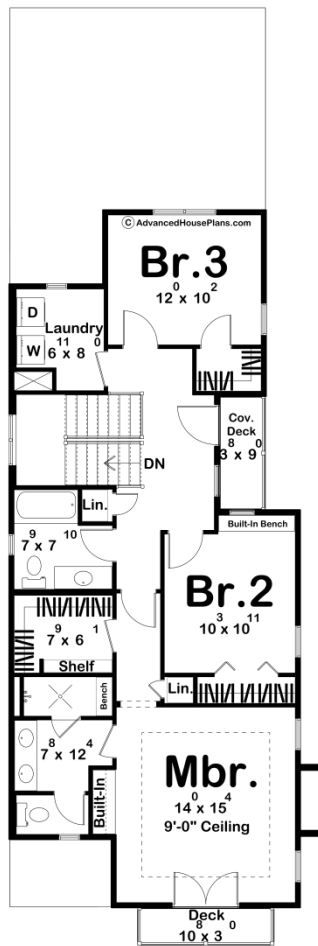




30570 - Stone Oak Data Sheet

| | | | | | |
|---------------|-----------|------------|-----------|----------------|----------------|
| 1884 SQ FT | 3 BEDS | 3 BATHS | 2 BAYS | 24' 8" WIDE | 70' 4" DEEP |
|---------------|-----------|------------|-----------|----------------|----------------|





Construction Specs

Layout

| | |
|-------------|---|
| Bedrooms | 3 |
| Bathrooms | 3 |
| Garage Bays | 2 |

Square Footage

| | |
|---------------------|--------------|
| Main Level | 904 Sq. Ft. |
| Second Level | 980 Sq. Ft. |
| Covered Area | 76 Sq. Ft. |
| Garage | 440 Sq. Ft. |
| Total Finished Area | 1884 Sq. Ft. |

Exterior Dimensions

| | |
|--|--------|
| Width | 24' 8" |
| Depth | 70' 4" |
| Ridge Height | 24' 8" |
| <i>Calculated from main floor line</i> | |

Default Construction Stats

Stats are unique to the individual plan.

| | |
|----------------------------|------------------------------|
| Foundation Type | Slab |
| Exterior Wall Construction | 2x4 |
| Roof Pitches | Primary 6/12, Secondary 4/12 |
| Main Wall Height | 9' |
| Second Wall Height | 8' |

Plan Description

Welcome to the Stone Oak, a beautiful two-story Craftsman-style home that combines timeless charm with modern amenities. This three-bedroom, three-bathroom residence is designed for comfortable living, with the first floor featuring a cozy living room with a fireplace, a spacious dining area, and a kitchen. The kitchen includes a convenient walk-in pantry and a flush snack bar, perfect for casual meals and entertaining. Upstairs, the master bedroom offers a private retreat with its own deck and a generous walk-in closet. The convenience continues with a dedicated laundry room on the second floor, making everyday tasks easier. The Stone Oak is the perfect blend of classic Craftsman style and contemporary living, offering a warm and inviting space for you and your family.