

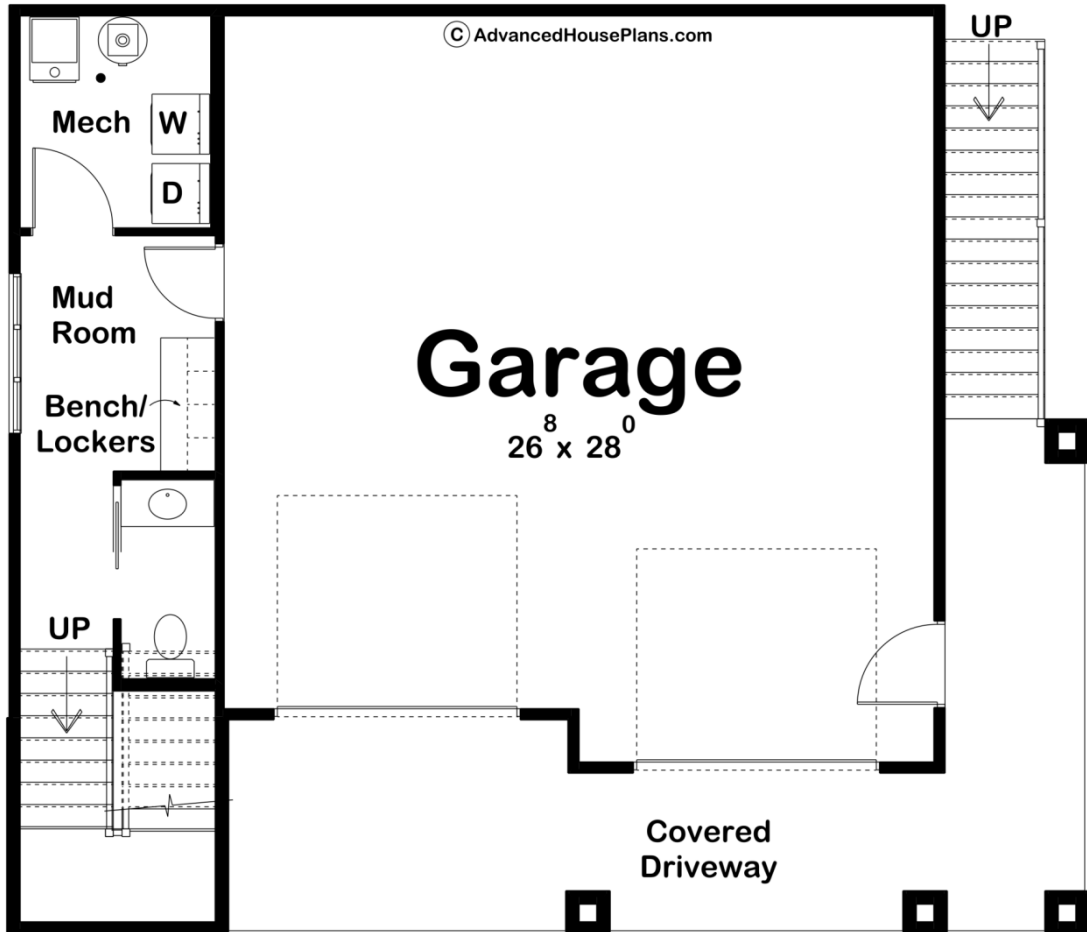
ADVANCED

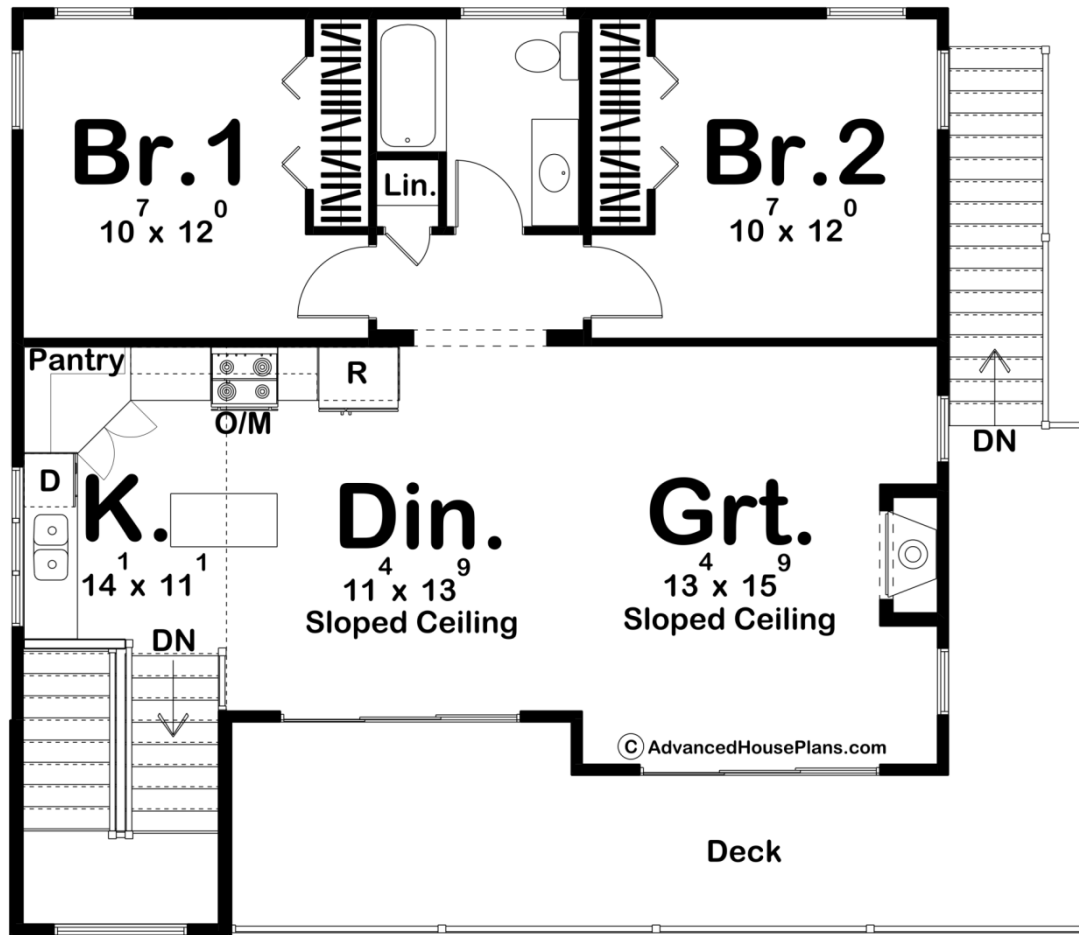
HOUSE PLANS



30196 - Stonehurst Data Sheet

1227 SQ FT	2 BEDS	2 BATHS	2 BAYS	40' 4" WIDE	34' 8" DEEP
---------------	-----------	------------	-----------	----------------	----------------





Construction Specs

Layout

Bedrooms	2
Bathrooms	2
Garage Bays	2

Square Footage

Main Level	202 Sq. Ft.
Second Level	1025 Sq. Ft.
Garage	748 Sq. Ft.
Total Finished Area	1227 Sq. Ft.

Exterior Dimensions

Width	40' 4"
Depth	34' 8"
Ridge Height	27' 0"
<i>Calculated from main floor line</i>	

Default Construction Stats

Stats are unique to the individual plan.

Foundation Type	Slab
Exterior Wall Construction	2x4
Roof Pitches	2/12
Main Wall Height	10'
Second Wall Height	9'

Plan Description

This modern style carriage home has a beautifully unique exterior, but also an interior that matches perfectly. While giving off a feel of modern, it also gives off a feel of a craftsman style home in the mountains. The exterior of the home has great curb appeal, with different textures of light-colored stone along with dark garage doors and finishings. Before even stepping inside, you can be in awe of Stonehurst's beauty. Take two different routes to get inside, either the main entry through the garage, where you are met with a mudroom style area, including lockers, a catchall, and a laundry room, or head up the stairs to the second level. Here, you are welcomed with a large open area, including the kitchen, dining, and great room. The dining room being in between the other two adds a great separation of space without taking away from the airiness of the room itself. The walk-in pantry and fireplace are just two simple features that add to the elegance of this home. The Stonehurst plan is complete with two bedrooms and a shared bathroom. Perfect for a new family or empty nesters.