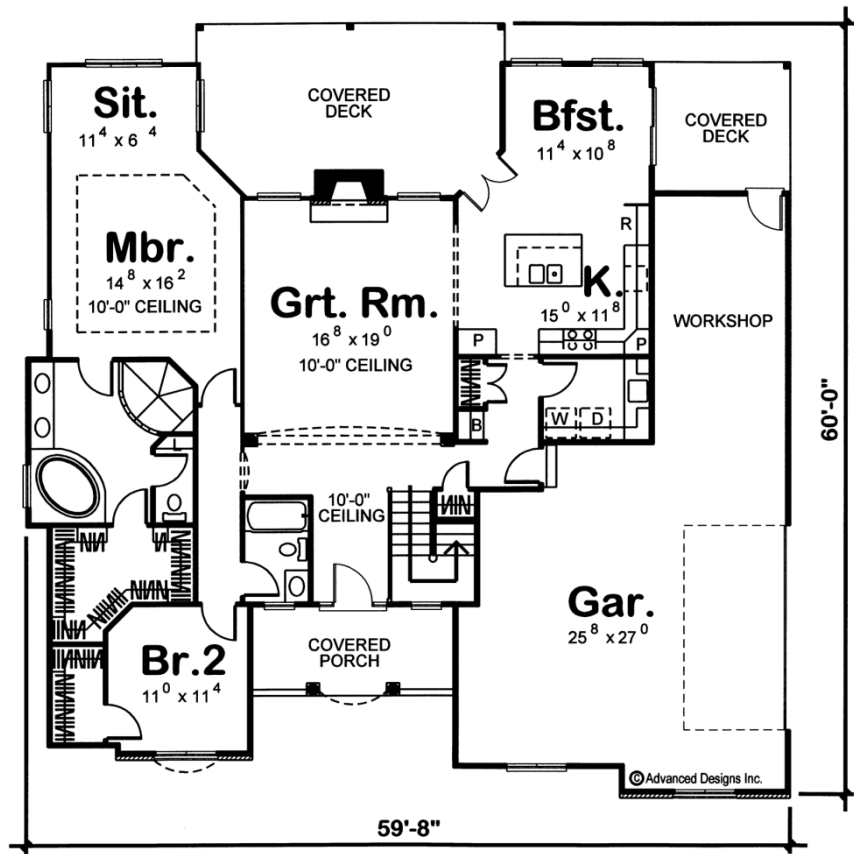


29078 - Terrel Data Sheet

1828 SQ FT	2 BEDS	2 BATHS	2 BAYS	60' 0" WIDE	60' 0" DEEP
---------------	-----------	------------	-----------	----------------	----------------



Construction Specs

Layout

Bedrooms

Bathrooms	2
Garage Bays	2
Square Footage	
Main Level	1828 Sq. Ft.
Garage	862 Sq. Ft.
Total Finished Area	1828 Sq. Ft.
Exterior Dimensions	
Width	60' 0"
Depth	60' 0"
Ridge Height	25' 0"
<i>Calculated from main floor line</i>	
Default Construction Stats	
<i>Stats are unique to the individual plan.</i>	
Foundation Type	Basement
Exterior Wall Construction	2x4
Roof Pitches	7/12 F-B, 10/12 S-S
Foundation Wall Height	9'
Main Wall Height	9'

Plan Description

A charming dormer, perched atop a quaint covered front porch, lends a sense of warmth and welcome to this 1-story, Traditional-style house plan. Upon entry, guests receive the gift of long views to the great room and beyond. A wide arch spans the opening to the great room, which is highlighted by a fireplace, flanked by windows to the rear covered deck. A smartly-designed kitchen and breakfast area lie open to the great room for easy entertaining. The kitchen itself features an island breakfast bar/work area, two pantry areas and plenty of counter space. The adjacent breakfast area accesses two separate rear covered decks for multiple dining options. Just off the kitchen, a utility area includes a laundry room with sink, and a mud room with built-in bench and coat closet. This area conveniently accesses the home's 2-car garage that features a spacious workshop area with access to a rear covered deck. All sleeping quarters reside on the opposite side of the home. The master suite's bedroom showcases a 10-foot-high ceiling and a spacious sun-lit sitting area. The bath area offers pampering amenities such as a corner soaking tub, corner glass-block walk-in shower, compartmented toilet and sizeable walk-in closet. Bedroom 2, situated for privacy, features a walk-in closet and has easy access to a hall bath.