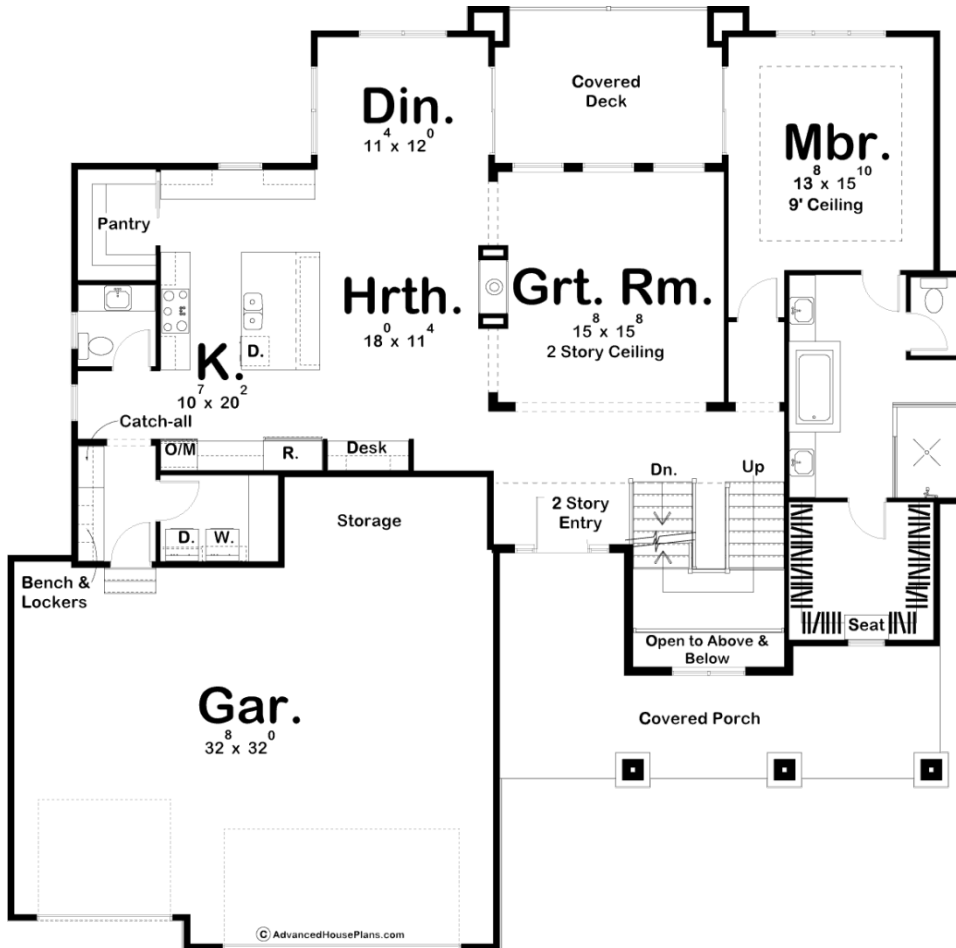
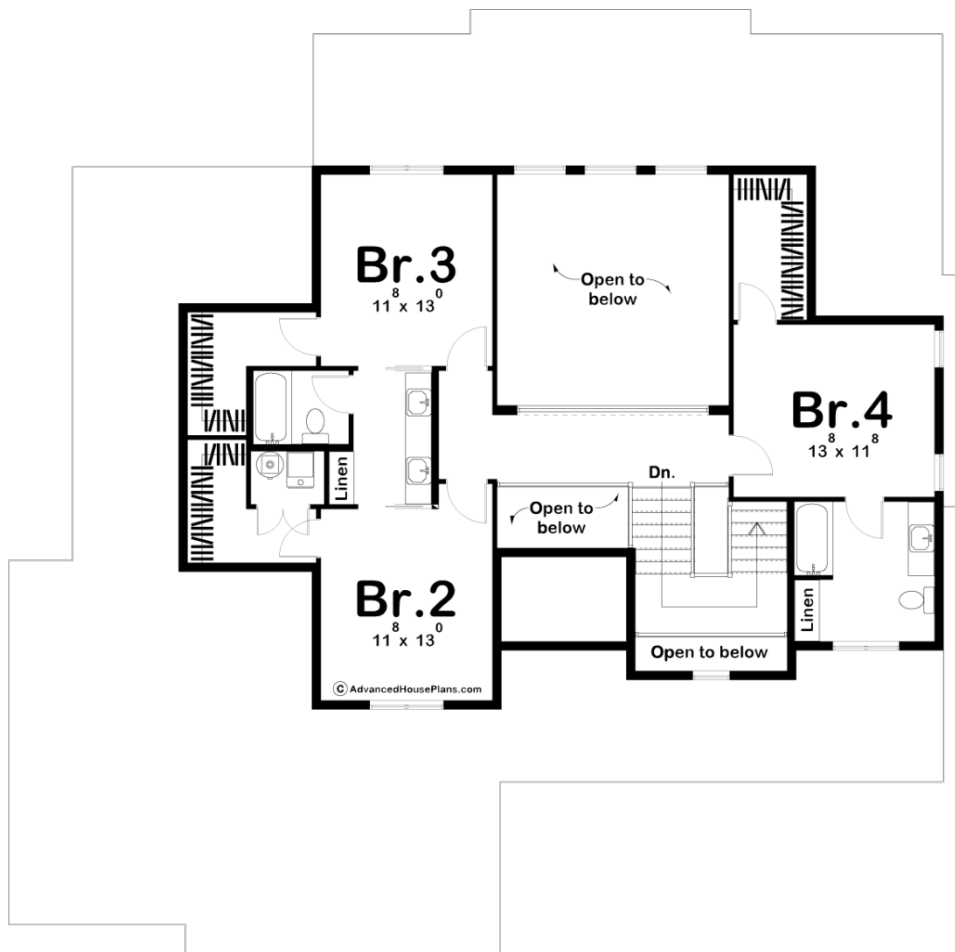




**29372 - Texas Hillside Data Sheet**

2955 SQ FT	4 BEDS	4 BATHS	3 BAYS	65' 0" WIDE	64' 0" DEEP
---------------	-----------	------------	-----------	----------------	----------------





## Construction Specs

### Layout

Bedrooms	4
Bathrooms	4
Garage Bays	3

### Square Footage

Main Level	1898 Sq. Ft.
Second Level	1057 Sq. Ft.
Garage	933 Sq. Ft.
Total Finished Area	2955 Sq. Ft.

### Exterior Dimensions

Width	65' 0"
Depth	64' 0"
Ridge Height	29' 0"
<i>Calculated from main floor line</i>	

### Default Construction Stats

*Stats are unique to the individual plan.*

Foundation Type	Basement
Exterior Wall Construction	2x4
Roof Pitches	Primary 6/12, Secondary 4/12
Foundation Wall Height	9'
Main Wall Height	9'
Second Wall Height	8'

## Plan Description

Stone shrouded details enhance the solid character of this family-friendly 1.5-story house plan. Grand impressions are made on the inside, beneath the entry and great room's 2-story-high ceiling. The great room, with views to the rear through a covered deck, shares a see-thru fireplace with the hearth room. The kitchen, open to the hearth room and dining area, boasts generous counter space, a work island, built-in desk, and walk-in pantry. The home's 3-car garage is accessed from the kitchen through a mudroom/utility area, complete with laundry, powder bath, bench, lockers, and a handy catch-all. The master suite rests quietly away from the hustle and bustle of the main-floor living areas. Its bath is well appointed with his and her vanities, compartmented toilet, spacious shower and roomy walk-in closet with built-in dressing seat. Upstairs, the three secondary bedrooms enjoy their own privacy. Each bedroom includes a walk-in closet. Bedrooms 2 and 3 share a Jack-n- Jill bath with compartmented toilet and tub. Bedroom 4 benefits from access to its own bath. Additional intriguing points of this house plan include views from second-story balconies to the great room and entry area below, as well as open views above and below from the U-shaped stairway.