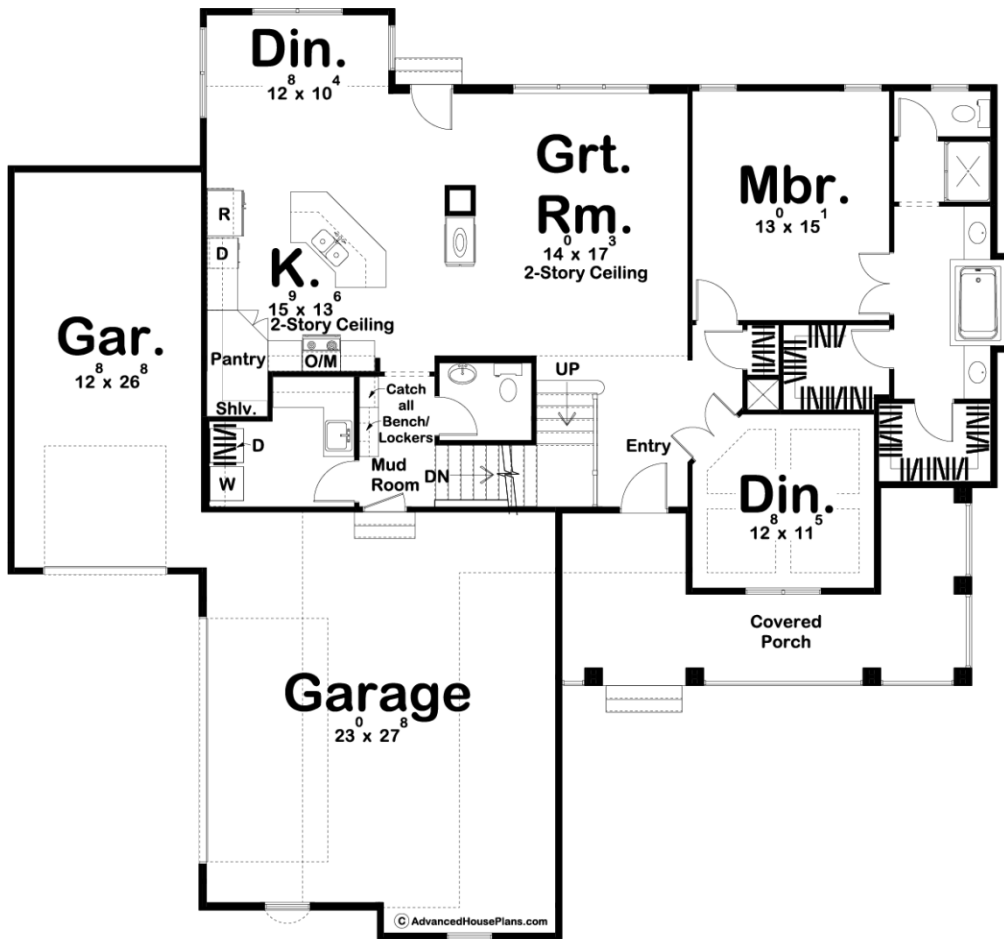
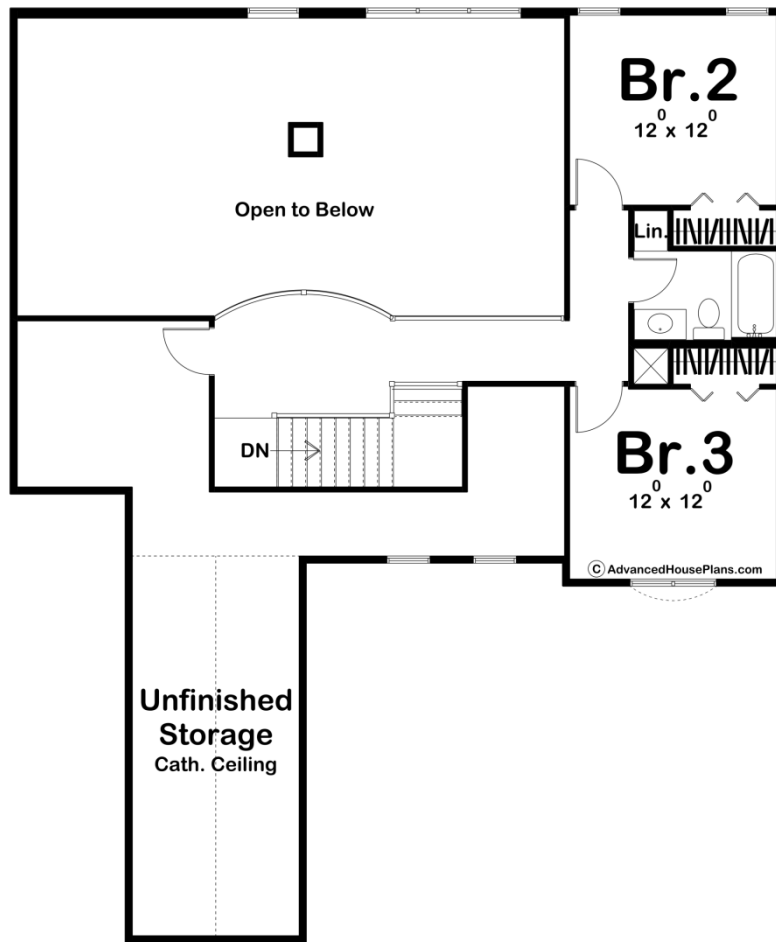




**29140 - Thompson Data Sheet**

2150 SQ FT	3 BEDS	3 BATHS	3 BAYS	65' 0" WIDE	61' 0" DEEP
---------------	-----------	------------	-----------	----------------	----------------





## Construction Specs

### Layout

Bedrooms	3
Bathrooms	3
Garage Bays	3

### Square Footage

Main Level	1590 Sq. Ft.
Second Level	560 Sq. Ft.
Garage	975 Sq. Ft.
Total Finished Area	2150 Sq. Ft.

### Exterior Dimensions

Width	65' 0"
Depth	61' 0"
Ridge Height	28' 0"
<i>Calculated from main floor line</i>	

### Default Construction Stats

*Stats are unique to the individual plan.*

Foundation Type	Basement
Exterior Wall Construction	2x4
Roof Pitches	Primary 7/12, Secondary 10/12
Foundation Wall Height	9'
Main Wall Height	9'
Second Wall Height	8'

## Plan Description

A wrapping front porch chimes in with a trio of soaring gables on this Traditional-Style, 1.5-story house plan. Just inside, double doors reveal the presence of a private den that resides beneath a boxed beam ceiling. A few steps further lead guests into the great room, which shares a 2-story-high ceiling with the kitchen and a portion of the breakfast area. Also shared with the kitchen area is a fireplace, open on three sides for optimal enjoyment. The kitchen itself is smartly designed with an island work area and walk-in pantry. Just off the kitchen, a utility area includes a laundry room, powder bath, and mudroom with built-in bench. This area accesses the home's 3-car garage, which is comprised of a 2-car, side-load garage and a 1-car, front-load garage. On the opposite side of the home, the master suite enjoys its solitude and is graced by a bath area that features his-and-her vanities, soaking tub, shower, compartmented toilet, and two separate walk-in closets. Upstairs, bedrooms 2 and 3 share a central hall bath. The upper-level landing offers views to the great room below and provides access to a large unfinished storage area.