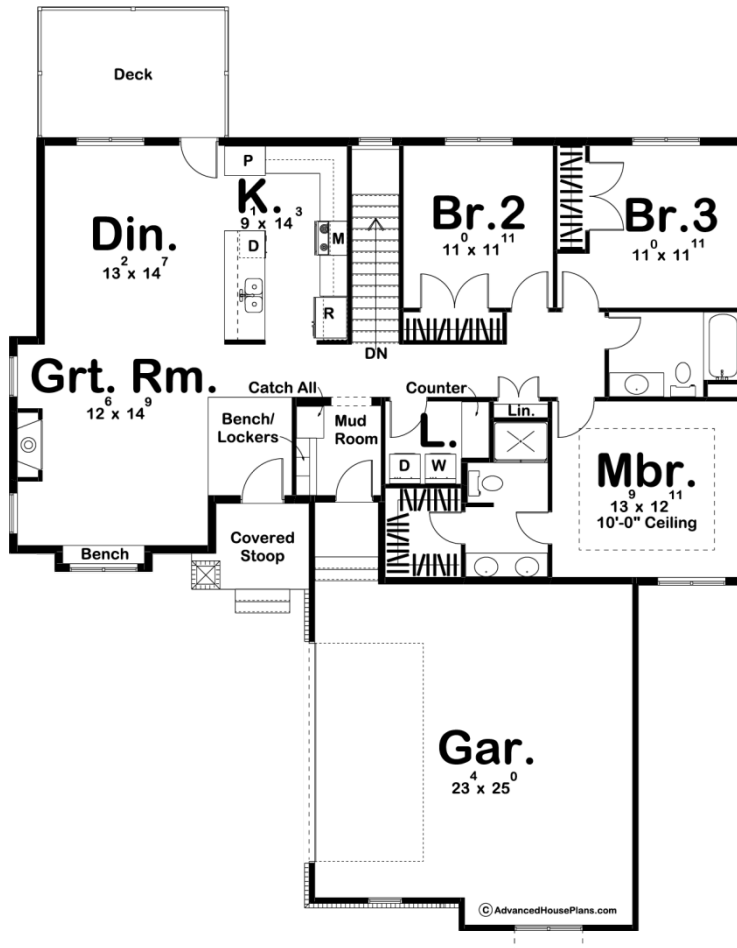




**29524 - Turnberry Data Sheet**

1628 SQ FT	3 BEDS	2 BATHS	2 BAYS	54' 0" WIDE	58' 0" DEEP
---------------	-----------	------------	-----------	----------------	----------------



**Construction Specs**

**Layout**

Bedrooms

Bathrooms	2
-----------	---

Garage Bays	2
-------------	---

### Square Footage

Main Level	1628 Sq. Ft.
------------	--------------

Garage	620 Sq. Ft.
--------	-------------

Total Finished Area	1628 Sq. Ft.
---------------------	--------------

### Exterior Dimensions

Width	54' 0"
-------	--------

Depth	58' 0"
-------	--------

Ridge Height	20' 0"
--------------	--------

*Calculated from main floor line*

### Default Construction Stats

*Stats are unique to the individual plan.*

Foundation Type	Basement
-----------------	----------

Exterior Wall Construction	2x4
----------------------------	-----

Roof Pitches	6/12 Primary, 4/12 Secondary
--------------	------------------------------

Foundation Wall Height	9'
------------------------	----

Main Wall Height	9'
------------------	----

## Plan Description

At less than 1,700 square feet, this family-friendly, traditional-style, 1 story house plan offers practical room arrangements and an abundance of additional space. Inside, the entry opens to a comfortable great room with fireplace and a cozy window seat. The open arrangement of the great room, dining area, and kitchen creates an inviting atmosphere for entertaining guests or just hanging out with the family. The master suite includes a bath with walk-in closet and his and her vanities. Bedrooms 2 and 3 share a bath that lies just down the hall from the laundry.