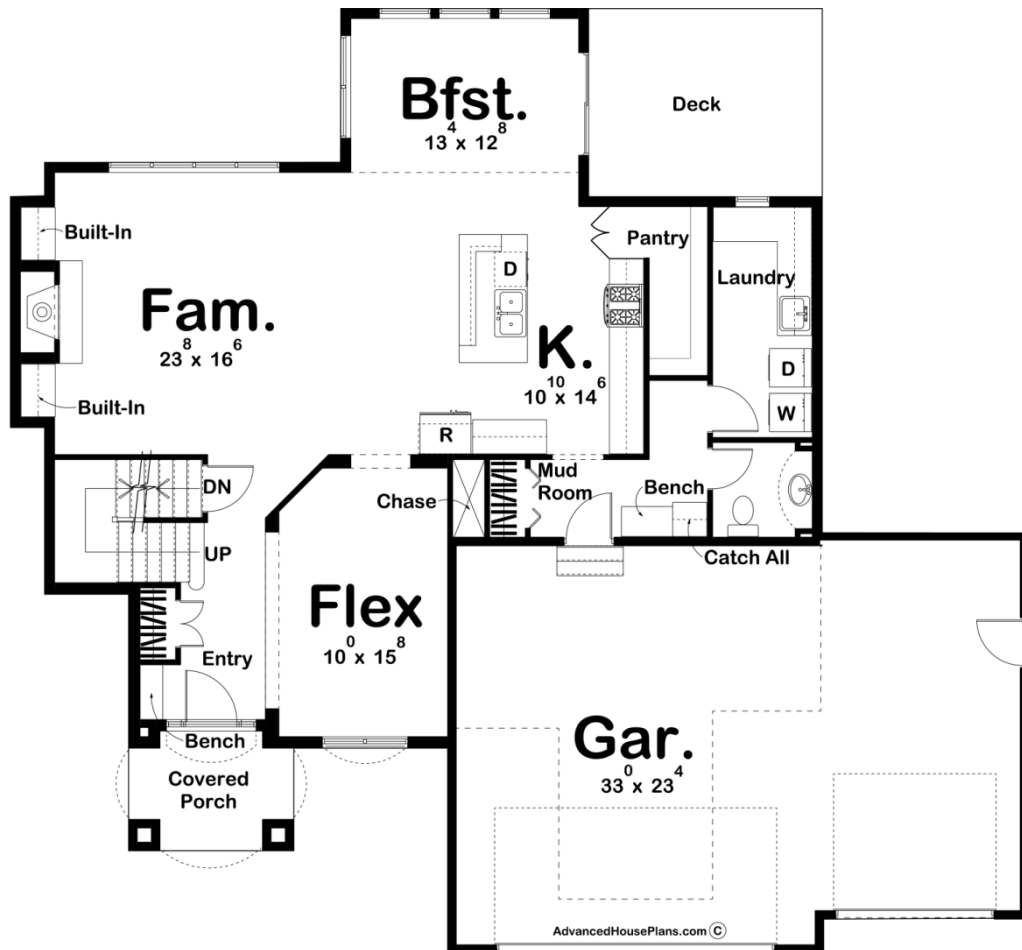
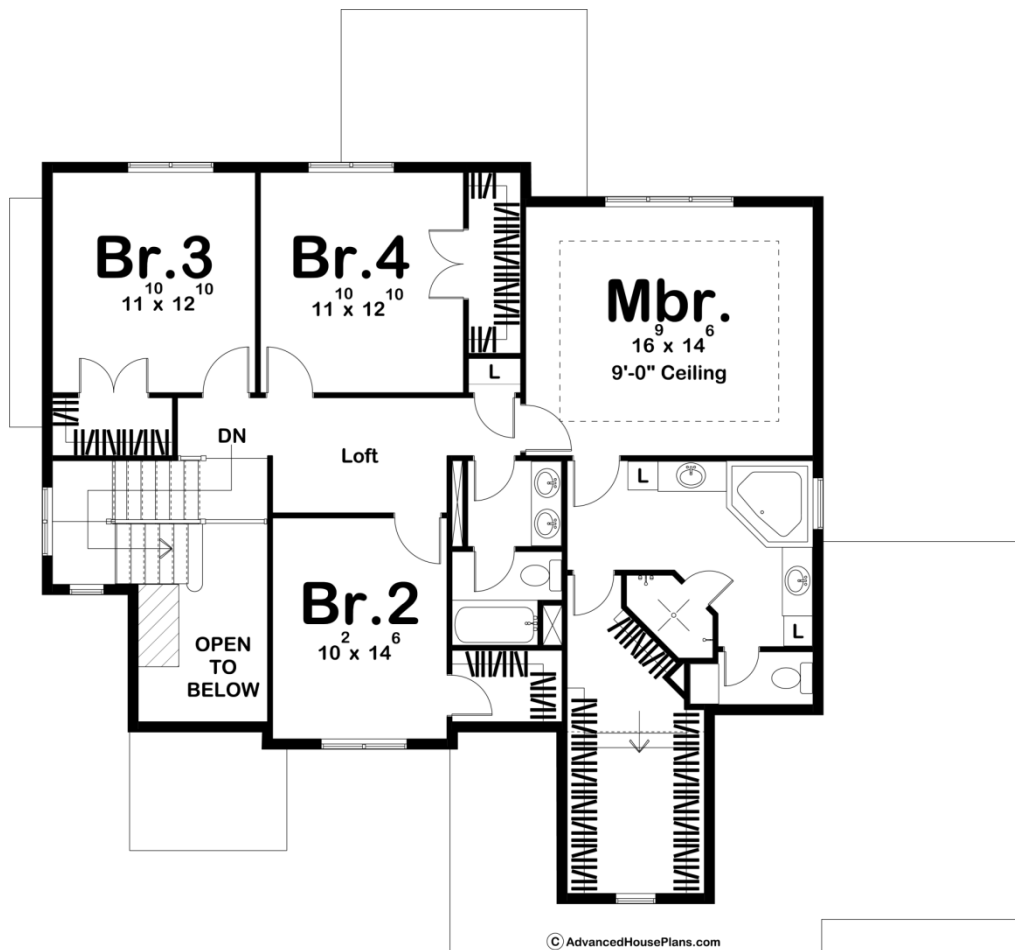




**29035 - Tuscan Data Sheet**

2723 SQ FT	4 BEDS	3 BATHS	3 BAYS	60' 0" WIDE	55' 0" DEEP
---------------	-----------	------------	-----------	----------------	----------------





## Construction Specs

### Layout

Bedrooms	4
Bathrooms	3
Garage Bays	3

### Square Footage

Main Level	1360 Sq. Ft.
Second Level	1363 Sq. Ft.
Garage	777 Sq. Ft.
Total Finished Area	2723 Sq. Ft.

### Exterior Dimensions

Width	60' 0"
Depth	55' 0"
Ridge Height	27' 0"
<i>Calculated from main floor line</i>	

### Default Construction Stats

*Stats are unique to the individual plan.*

Foundation Type	Basement
Exterior Wall Construction	2x4
Roof Pitches	6/12
Foundation Wall Height	9'
Main Wall Height	9'
Second Wall Height	8'

## Plan Description

29035 TuscanDay-to-day family living is considered throughout the design of this 2-story Mediterranean house plan. A tall covered porch grants entry, where a bench and coat closet stand ready to assist with the on's-and-off's of shoes and jackets. Tasteful columns and ceiling details define the boundaries of the dining area and adjacent servery alcove. Further inside, the great room, with corner fireplace, opens to the kitchen and sunny breakfast area, which is brightened by high transom windows and has direct access to a rear covered deck. The kitchen is graced by an abundance of work space, as well as a sizeable walk-in pantry. Just off the kitchen, the 3-car garage accesses the home through a practical utility space that includes a mud room with coat closet and bench, powder bath and laundry room with counter space and soaking sink. On the second level, a spacious master suite offers pampering amenities in the bath, including an angled soaking tub and shower, his-and-her vanities, compartmented toilet and spacious walk-in closet. A hall bath serves the secondary bedrooms, which all have generous closet space and are brightened by natural light.