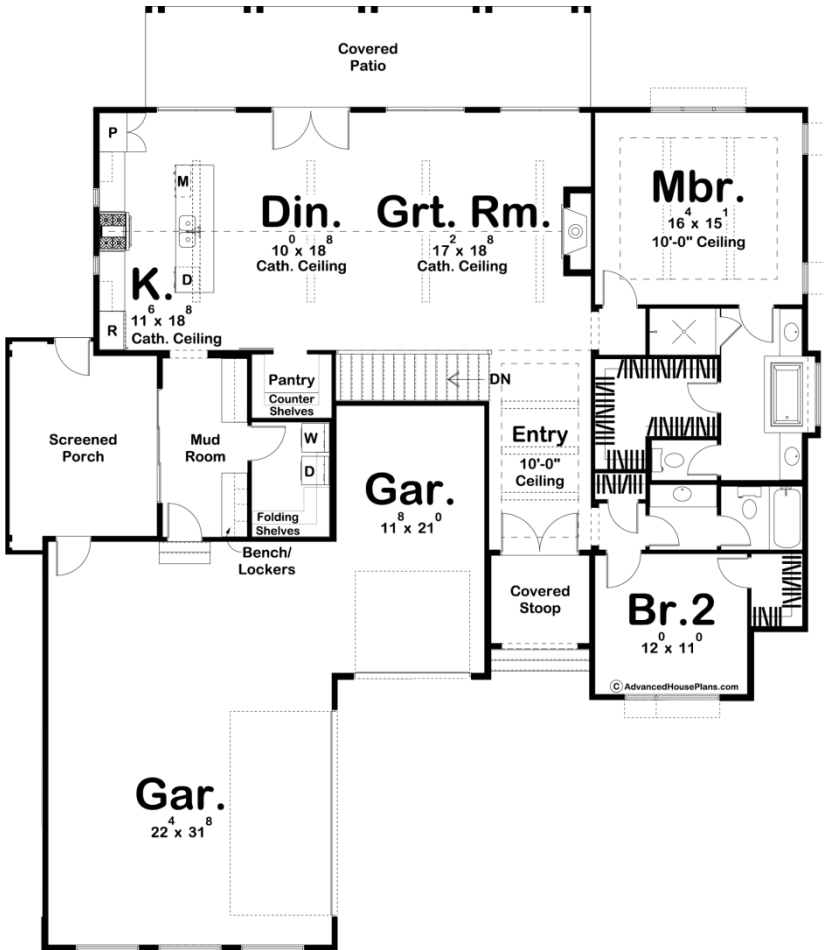




30130 - Ventura Data Sheet

1902 SQ FT	2 BEDS	2 BATHS	3 BAYS	64' 0" WIDE	74' 0" DEEP
---------------	-----------	------------	-----------	----------------	----------------



Construction Specs

Layout
--------

Bedrooms

Bathrooms	2
Garage Bays	3
<b>Square Footage</b>	
Main Level	1902 Sq. Ft.
Covered Area	546 Sq. Ft.
Garage	992 Sq. Ft.
Total Finished Area	1902 Sq. Ft.
<b>Exterior Dimensions</b>	
Width	64' 0"
Depth	74' 0"
Ridge Height <i>Calculated from main floor line</i>	27' 0"
<b>Default Construction Stats</b> <i>Stats are unique to the individual plan.</i>	
Foundation Type	Basement
Exterior Wall Construction	2x4
Roof Pitches	8/12 Primary, 4/12 Secondary
Foundation Wall Height	9'
Main Wall Height	9'

## Plan Description

This beautifully configured Modern House plan offers amenities that are usually found in much larger home designs. On the outside, dark gray siding with wood accents and a covered porch put on a striking display of curb appeal. Just inside, you'll be amazed at the open floor plan including a magnificent great room, which is warmed by a fireplace and flows into a dining room and large kitchen. The kitchen boasts plenty of counter space in addition to the spacious island. Just beyond the dining area, a covered patio extends entertaining options. The master suite enjoys a luxurious bath, complete with compartmented toilet, walk-in shower, dual vanities, and a large walk-in closet. On the other side of this house plan, the large 3 car garage accesses the home through a convenient mud room complete with a bench, lockers, and a catch-all.