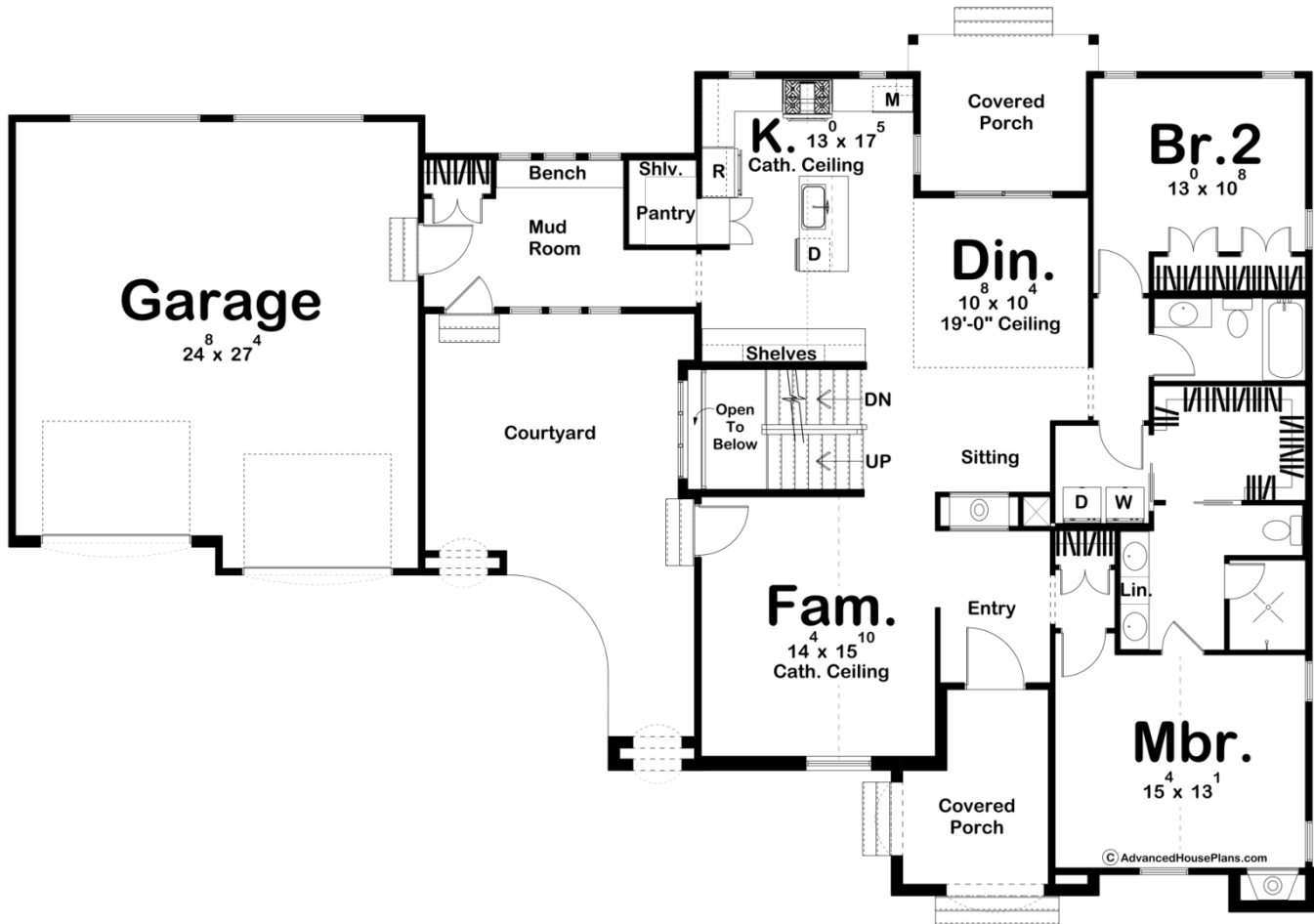
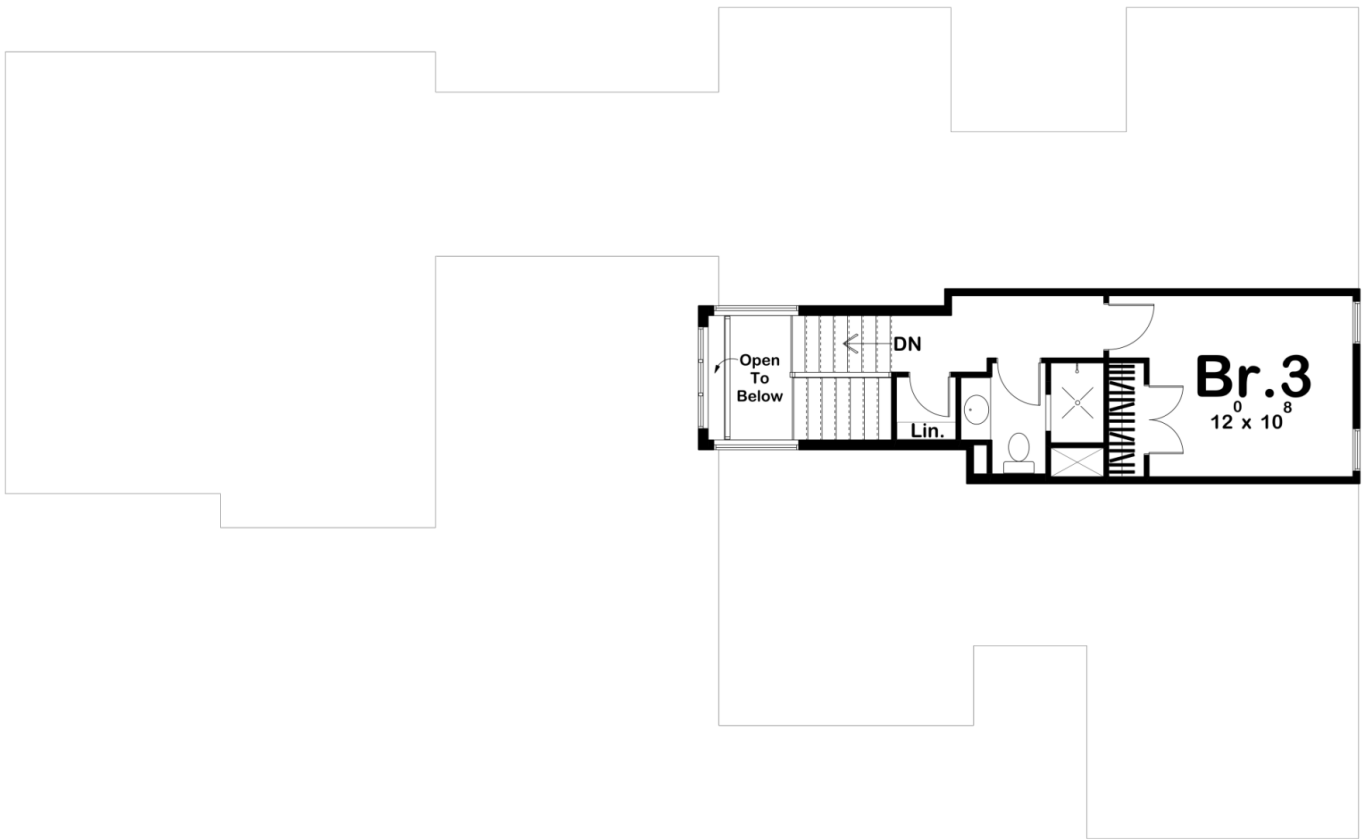




29944 - Voyage Data Sheet

2054 SQ FT	3 BEDS	3 BATHS	2 BAYS	79' 8" WIDE	53' 8" DEEP
---------------	-----------	------------	-----------	----------------	----------------





Construction Specs

Layout

Bedrooms	3
Bathrooms	3
Garage Bays	2

Square Footage

Main Level	1759 Sq. Ft.
Second Level	295 Sq. Ft.
Covered Area	205 Sq. Ft.
Garage	684 Sq. Ft.
Total Finished Area	2054 Sq. Ft.

Exterior Dimensions

Width	79' 8"
Depth	53' 8"
Ridge Height	28' 3"
<i>Calculated from main floor line</i>	

Default Construction Stats

Stats are unique to the individual plan.

Foundation Type	Basement
Exterior Wall Construction	2x4
Roof Pitches	Primary 14/12, Secondary 10/12, 4/12
Foundation Wall Height	9'
Main Wall Height	9'
Second Wall Height	8'

Plan Description

The Voyage plan is a stunning 1.5 Story, French Country style house plan. The exterior of the home features arches and an amazing roofline with curved accents. A combination of brick and stucco brings the home's French Country facade together nicely. As you walk in through the front covered porch, you'll find yourself in the entryway. To the left of the entry, you'll find the family room which lies under a cathedral ceiling. A see-through fireplace looks from the entry into the dining area. The home's spacious kitchen includes a large island with a snack bar, ample counter space, and a walk-in pantry. A mudroom connects the kitchen area with the garage and features a coat closet and a bench. A courtyard can be accessed from both the mudroom and the family room and is a great spot for outdoor entertainment. The master suite is situated on the main floor. The master bedroom lies under its own cathedral ceiling and includes a cozy fireplace. The master bathroom has his/her vanities, a walk-in shower, and a large walk-in closet. One additional bedroom can be found on the main floor. Upstairs, you will find an additional bedroom and bathroom.