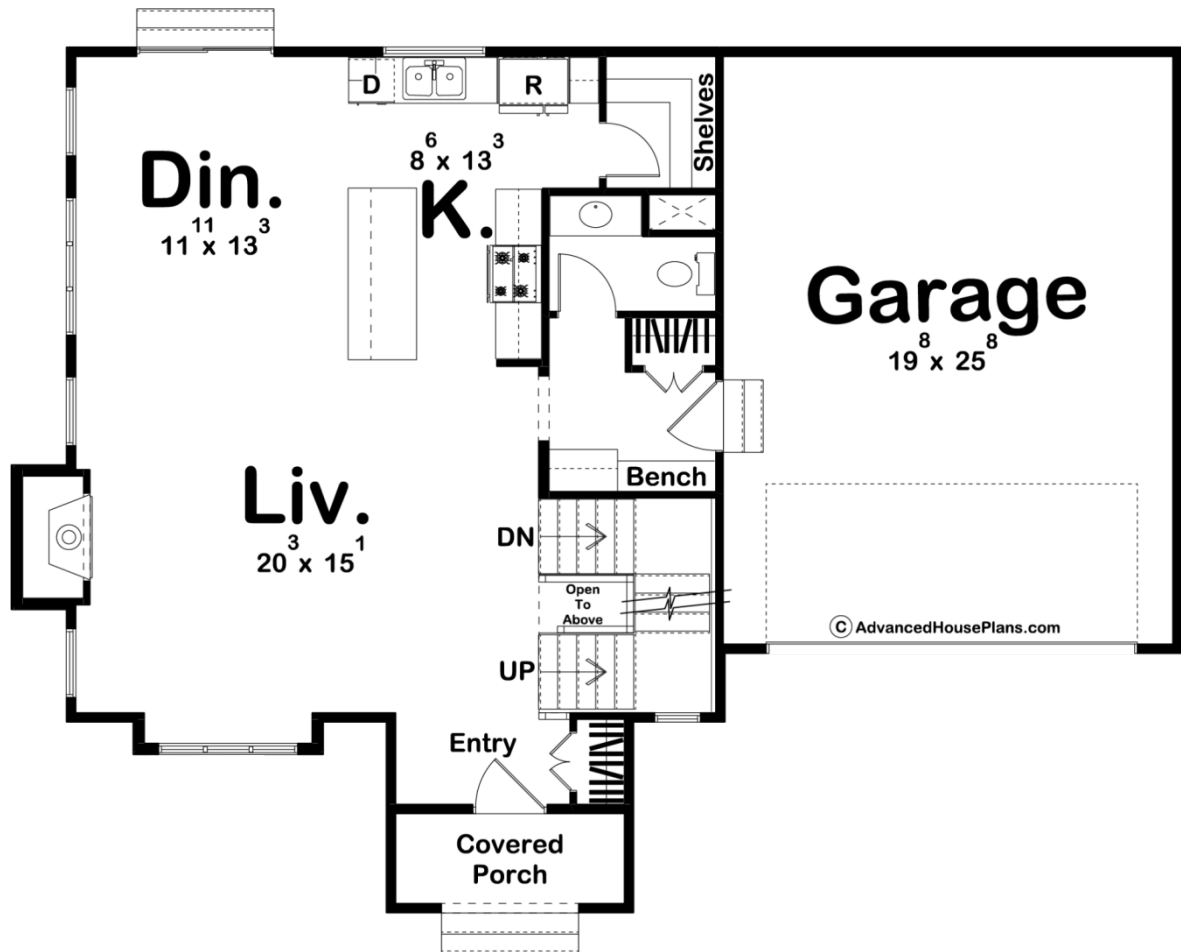
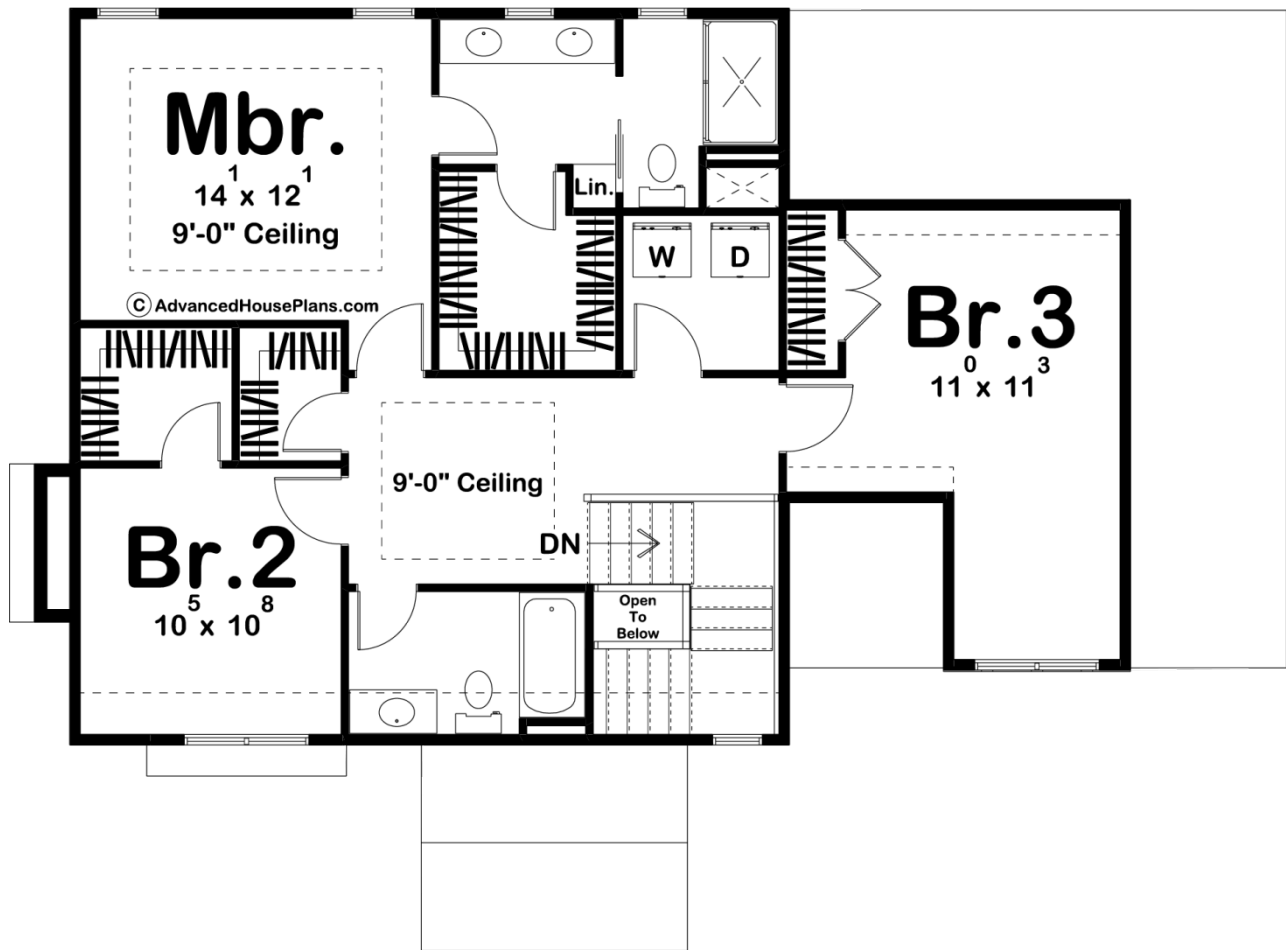




**29934 - Walcott Data Sheet**

1879 SQ FT	3 BEDS	3 BATHS	2 BAYS	51' 0" WIDE	38' 0" DEEP
---------------	-----------	------------	-----------	----------------	----------------





## Construction Specs

### Layout

Bedrooms	3
Bathrooms	3
Garage Bays	2

### Square Footage

Main Level	904 Sq. Ft.
Second Level	975 Sq. Ft.
Garage	527 Sq. Ft.
Total Finished Area	1879 Sq. Ft.

### Exterior Dimensions

Width	51' 0"
Depth	38' 0"

### Default Construction Stats

*Stats are unique to the individual plan.*

Foundation Type	Basement
-----------------	----------

Exterior Wall Construction	2x4
Roof Pitches	12/12 Primary, 14/12 Secondary
Foundation Wall Height	9'
Main Wall Height	9'
Second Wall Height	8'

## Plan Description

If you are looking for a modern house with old-world charm, you'll love the Walcott plan. The exterior of this home exudes the classic charm of a cottage or Tudor style house, but the interior feels anything but classic. An inviting front covered porch lead you into the home. Immediately upon entry, you'll notice the wide open floor plan. The living room, dining room, and kitchen flow seamlessly together. The massive living room is warmed by a fireplace. The kitchen includes a large island with a snack bar and a walk-in pantry. A powder bath is tucked behind the kitchen for easy access from the homes main living area. Upstairs, you'll find 3 bedrooms including a wonderful master suite. The master bedroom lies under a decorative trayed ceiling adding extra height to make the room feel larger. The master bathroom includes his/her vanities and a large walk-in closet. Bedrooms 2 and 4 share a centrally located hall bathroom.