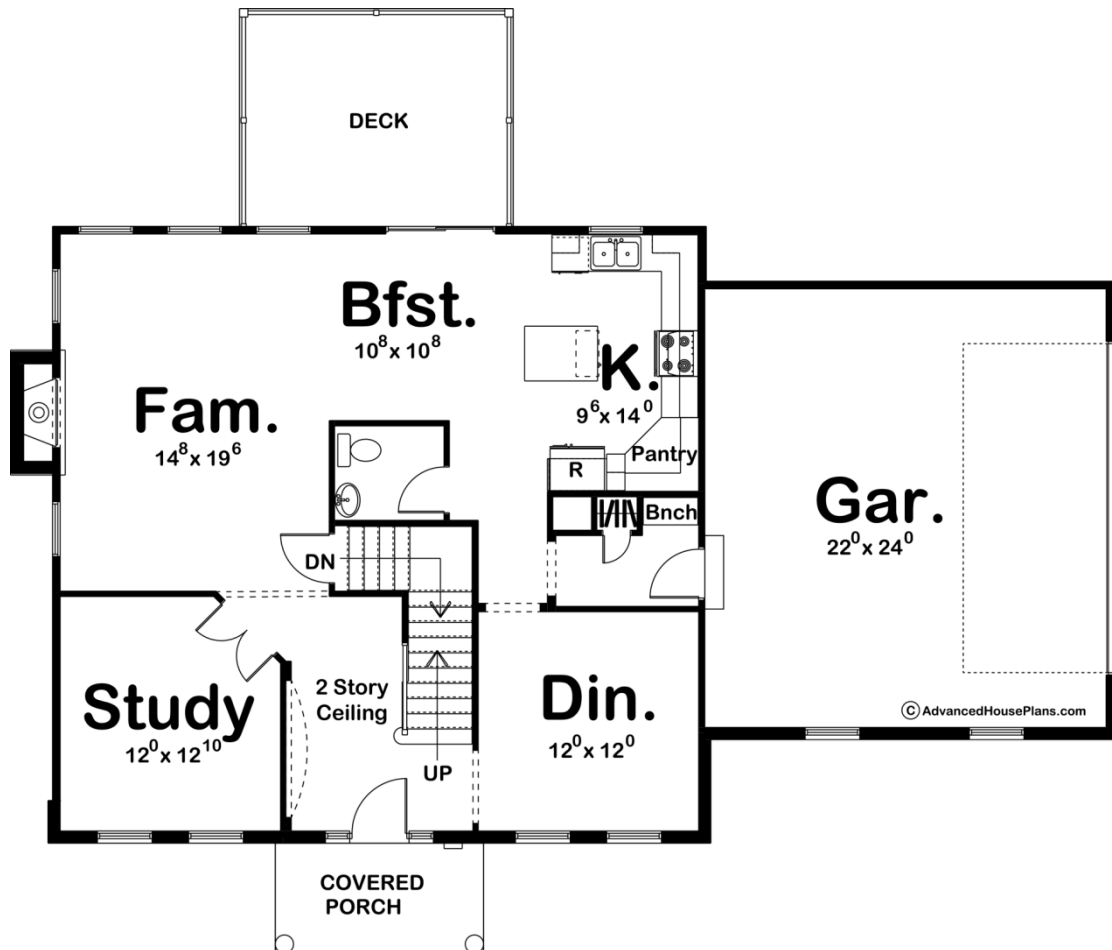


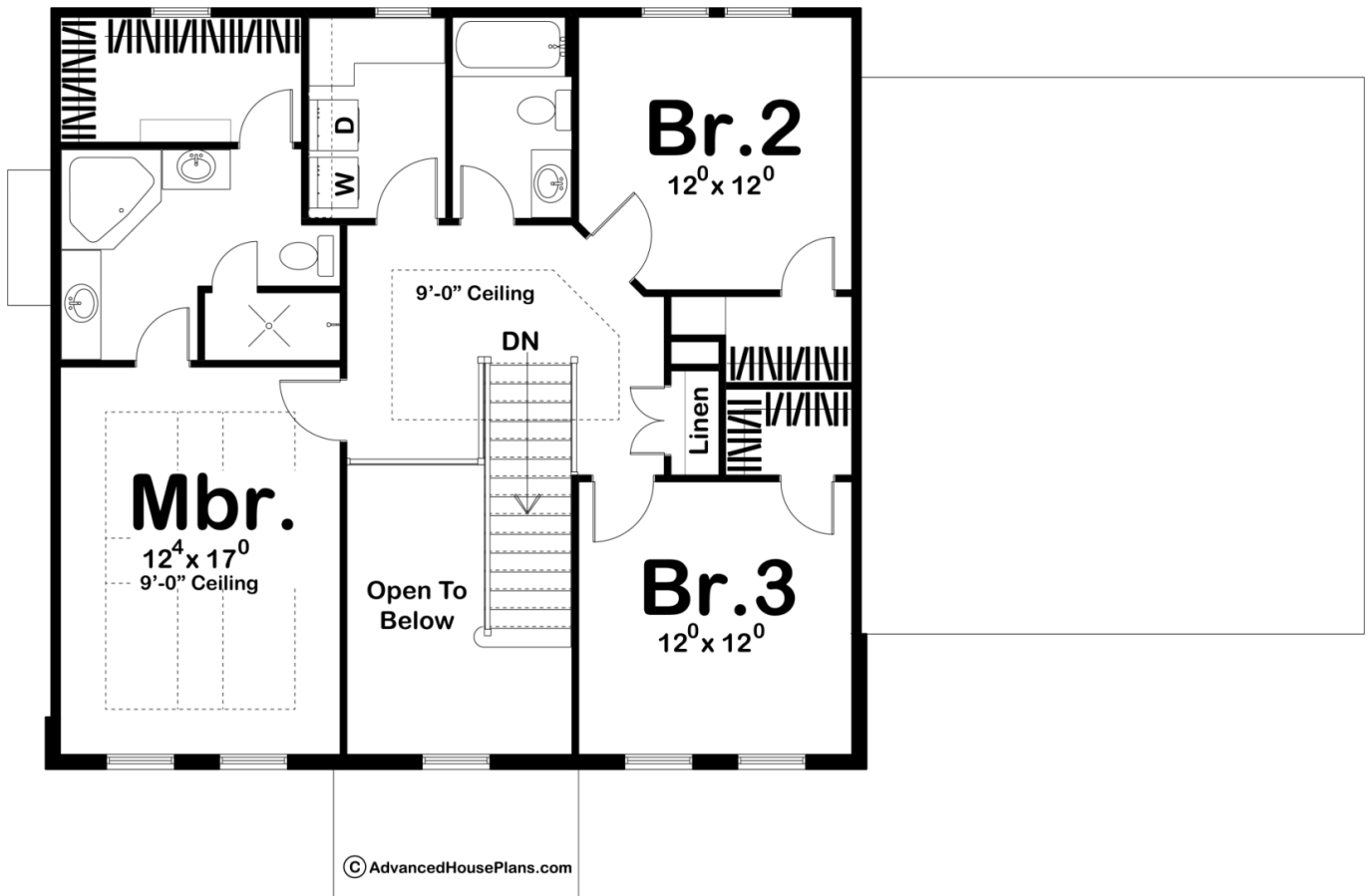


©WWW.ADVANCEDHOUSEPLANS.COM

### 29324 - Wallace Data Sheet

2235 SQ FT	3 BEDS	3 BATHS	2 BAYS	60' 0" WIDE	40' 0" DEEP
---------------	-----------	------------	-----------	----------------	----------------





## Construction Specs

### Layout

Bedrooms	3
Bathrooms	3
Garage Bays	2

### Square Footage

Main Level	1195 Sq. Ft.
Second Level	1040 Sq. Ft.
Garage	546 Sq. Ft.
Total Finished Area	2235 Sq. Ft.

### Exterior Dimensions

Width	60' 0"
Depth	40' 0"

### Default Construction Stats

*Stats are unique to the individual plan.*

Foundation Type	Basement
-----------------	----------

Exterior Wall Construction	2x4
Roof Pitches	6/12
Foundation Wall Height	9'
Main Wall Height	9'
Second Wall Height	8'

## Plan Description

The uncomplicated "footprint" and roofline of this classic Colonial-style, 2-story house plan, make it a popular and economically sensible choice for builders and buyers alike. Inside, guests are received in a traditionally styled entry hall with a stairway to the upper level. A formal dining room, with views to the front, lies off to the side. On the opposite side of the entry hall, double doors open into a private study. Just a few steps farther, and guests are welcomed into the family room with its fireplace and sunny windows. This comfortable area flows openly into the breakfast area and kitchen for easy mingling. The kitchen features an island workspace and corner pantry. The breakfast area accesses the rear deck, to extend entertaining to the outdoors. Upstairs, a central landing leads to all of the bedrooms. The master suite is well appointed with his-and-her vanities, corner soaking tub, shower and walk-in closet. Bedrooms 2 and 3 also have walk-in closets and they share a hall bath. A nearby laundry room and linen closet conveniently serve all bedrooms.