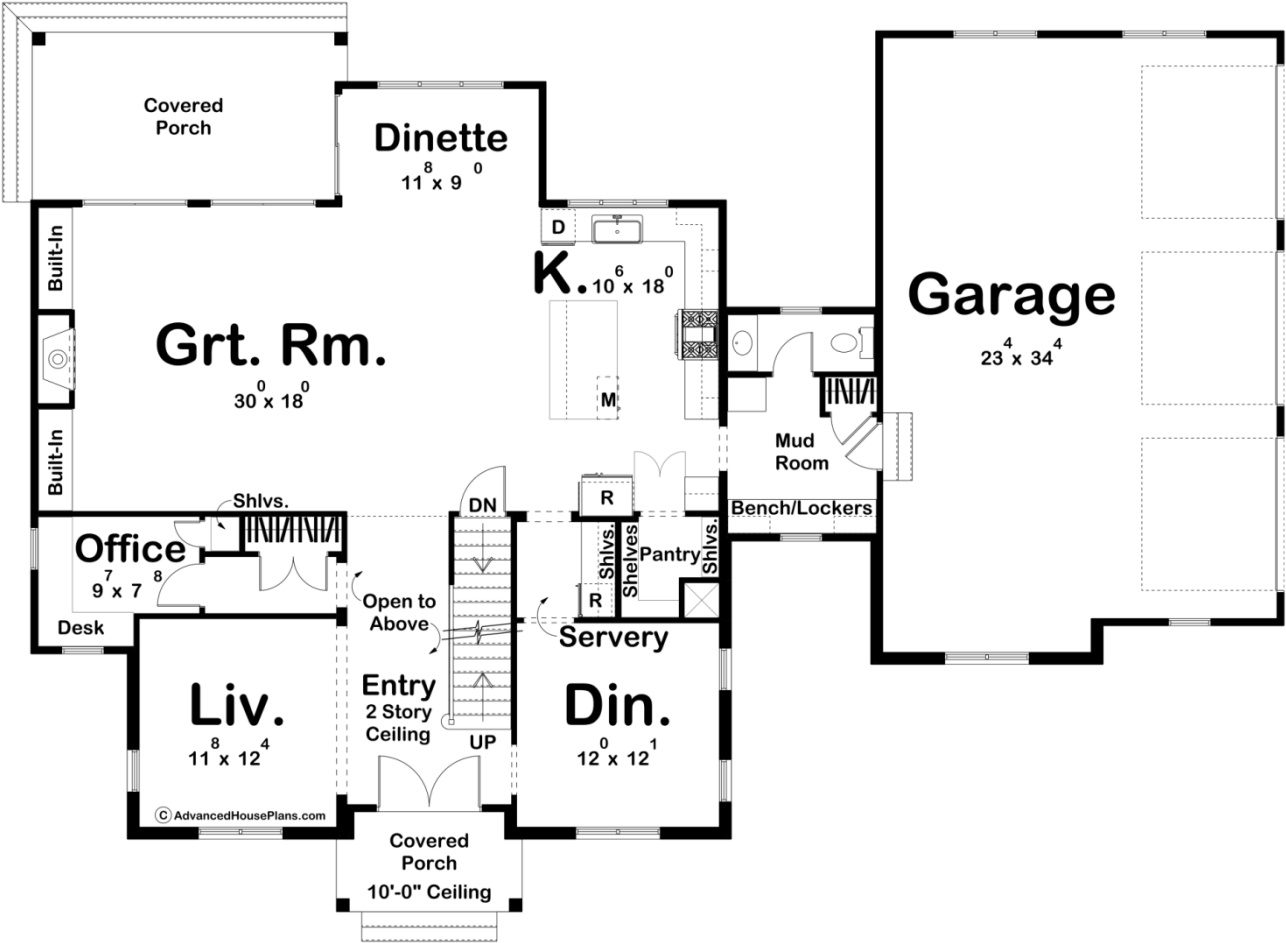
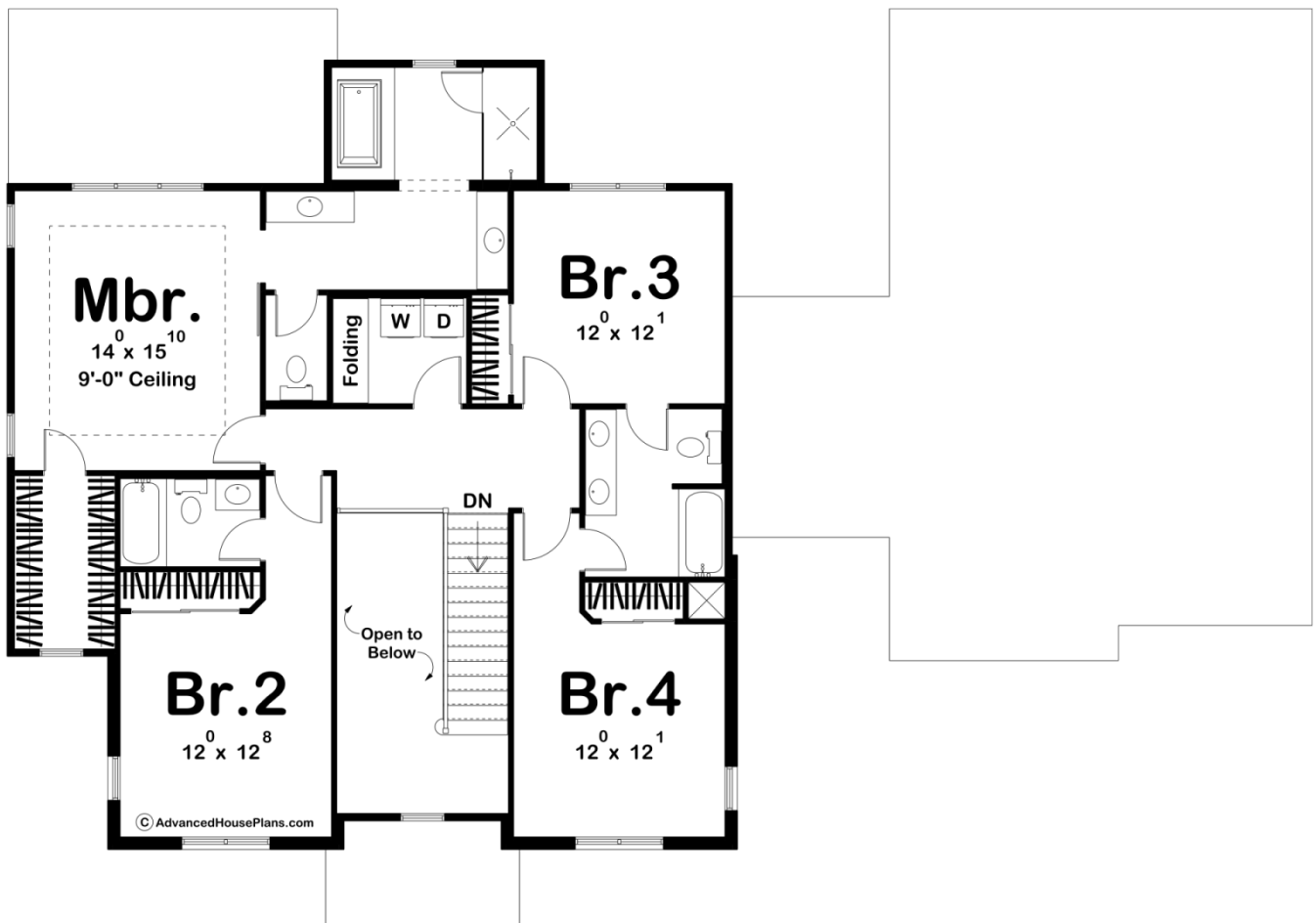




30153 - Wallace Heights Data Sheet

3033 SQ FT	4 BEDS	4 BATHS	3 BAYS	74' 0" WIDE	52' 0" DEEP
---------------	-----------	------------	-----------	----------------	----------------





Construction Specs

Layout

Bedrooms	4
Bathrooms	4
Garage Bays	3

Square Footage

Main Level	1663 Sq. Ft.
Second Level	1370 Sq. Ft.
Covered Area	246 Sq. Ft.
Garage	861 Sq. Ft.
Total Finished Area	3033 Sq. Ft.

Exterior Dimensions

Width	74' 0"
Depth	52' 0"
Ridge Height	31' 0"
<i>Calculated from main floor line</i>	

Default Construction Stats

Stats are unique to the individual plan.

Foundation Type	Basement
Exterior Wall Construction	2x4
Roof Pitches	8/12 Primary, 14/12 6/12 Secondary
Foundation Wall Height	9'
Main Wall Height	9'
Second Wall Height	8'

Plan Description

If you are looking for curb appeal, look no further than the Wallace Heights plan. The steep roofline and brick exterior give this house a wonderful Modern Cottage look. Inside, the entryway is flanked by both the dining room and living room and has a 2 story ceiling. Further, into the home, an open kitchen and great room provide a great space for entertaining guests. The kitchen includes a farm sink, an island with a flush snack bar, and a walk-in pantry. The great room is warmed by a beautiful fireplace that is flanked by built-in cabinets. A wonderful dinette area leads to a covered porch that is perfect for outdoor entertainment. On the upper level of this 2 story house, you will find 4 amazing bedrooms. The master suite includes a beautiful master bathroom complete with a walk-in shower, his/her vanities, and a whirlpool tub. Bedroom 2 has its own bathroom while bedrooms 3 and 4 share a convenient jack and jill bath. Back on the main level, the 3-car garage includes ample space. It accesses the home through a mudroom, complete with a bench and lockers.