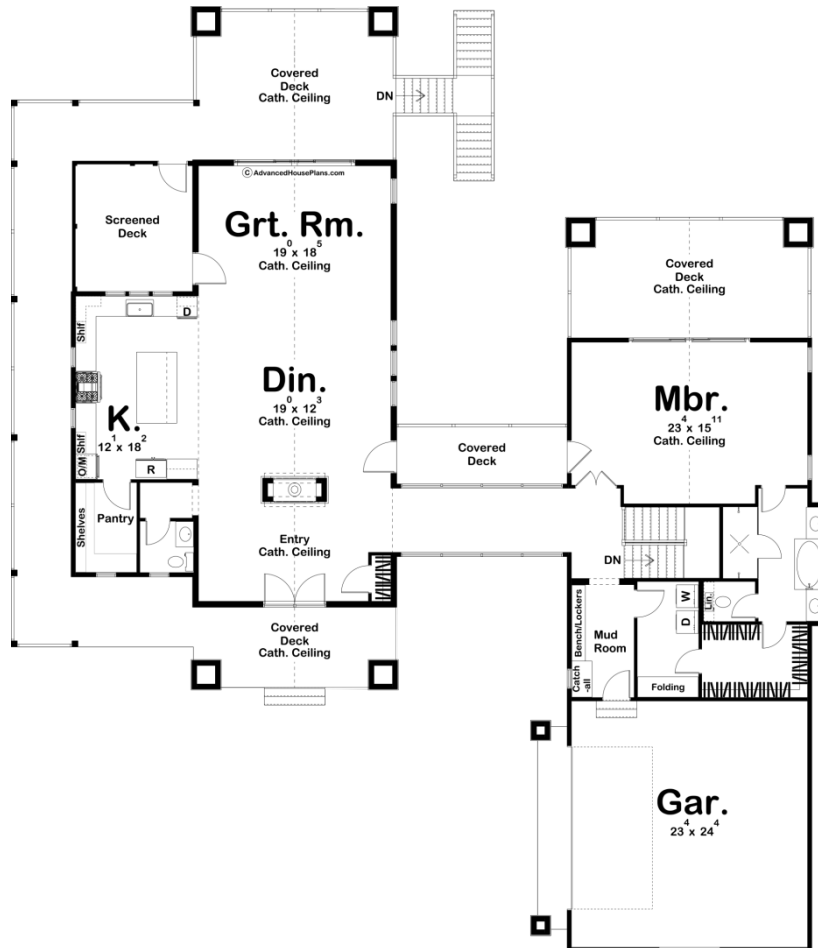
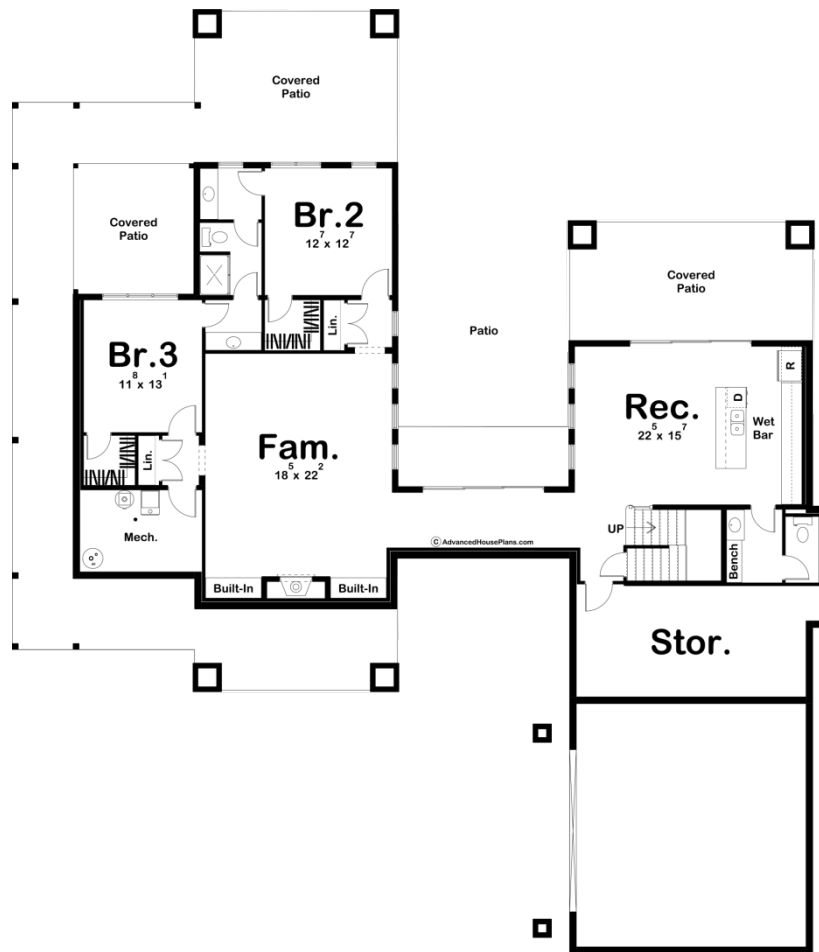




29927 - Walnut Creek Data Sheet

2213 SQ FT	1 BEDS	2 BATHS	2 BAYS	80' 8" WIDE	93' 0" DEEP
---------------	-----------	------------	-----------	----------------	----------------





Construction Specs

Layout

Bedrooms	1
Bathrooms	2
Garage Bays	2

Square Footage

Main Level	2213 Sq. Ft.
Covered Area	1444 Sq. Ft.
Garage	592 Sq. Ft.
Total Finished Area	2213 Sq. Ft.

Exterior Dimensions

Width	80' 8"
Depth	93' 0"
Ridge Height	22' 0"
<i>Calculated from main floor line</i>	

Default Construction Stats

Stats are unique to the individual plan.

Foundation Type	Walkout
Exterior Wall Construction	2x4
Roof Pitches	12/12 Primary, 6/12 8/12 Secondary
Foundation Wall Height	9'
Main Wall Height	10'

Plan Description

If you are looking for a lake home with plenty of outdoor space, look no further than the Walnut Creek plan. The exterior of the house has a unique curb appeal with its combination of shake siding, wood beams, and large windows. The courtyard garage immediately sets this home apart from the others. This home enjoys an abundance of outdoor space, including 3 large covered decks, and a screened-in deck off of the great room. This home features a wide-open floorplan. The great room and dining room lie under a soaring cathedral ceiling and flow seamlessly with the large kitchen. The kitchen includes a large island and a walk-in pantry. The master suite is separated from the main living space for ultimate privacy. The master bathroom includes his/her vanities, a soaking tub, and a large walk-in closet with access to the home's laundry room. You can enjoy the outdoor space directly from the master suite with your own private covered deck. An optional finished basement adds 1689 sq ft and includes 2 additional bedrooms, a family room with a fireplace, a rec room with a wet bar, and 2 additional bathrooms.