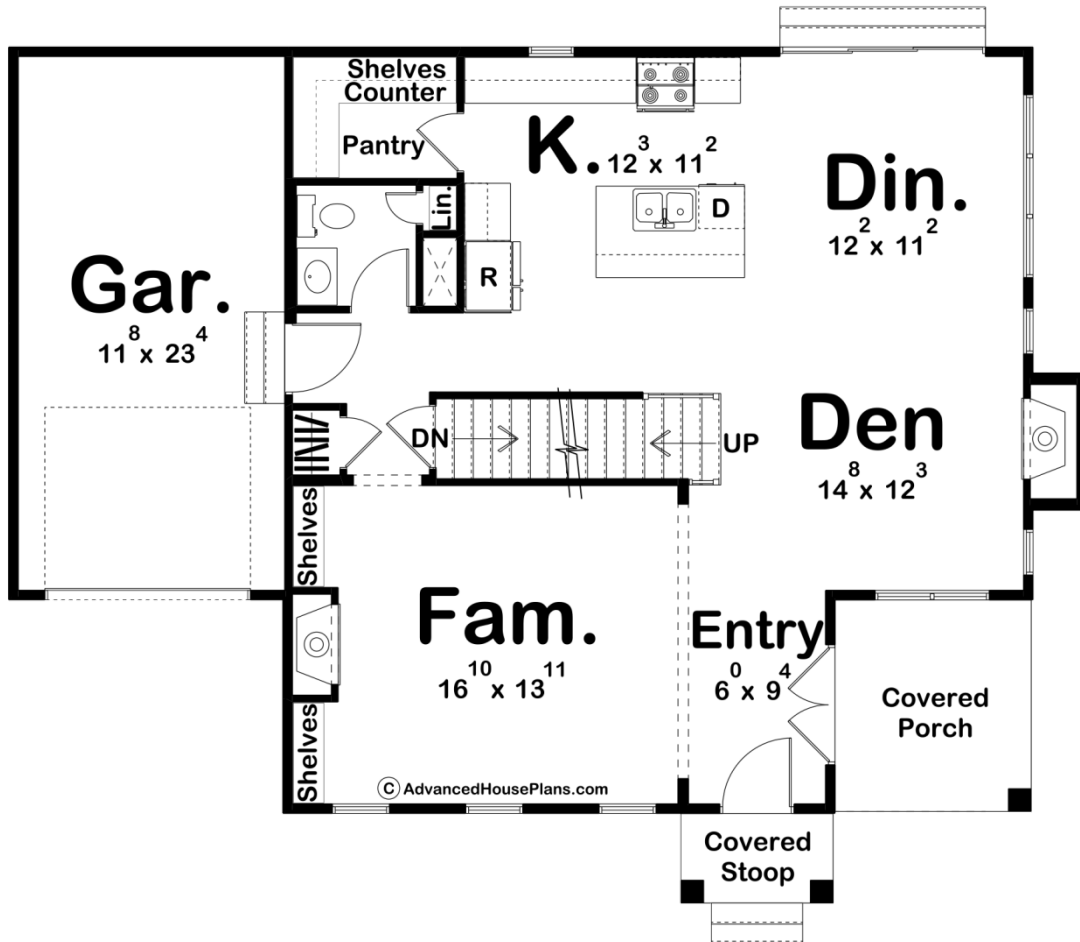
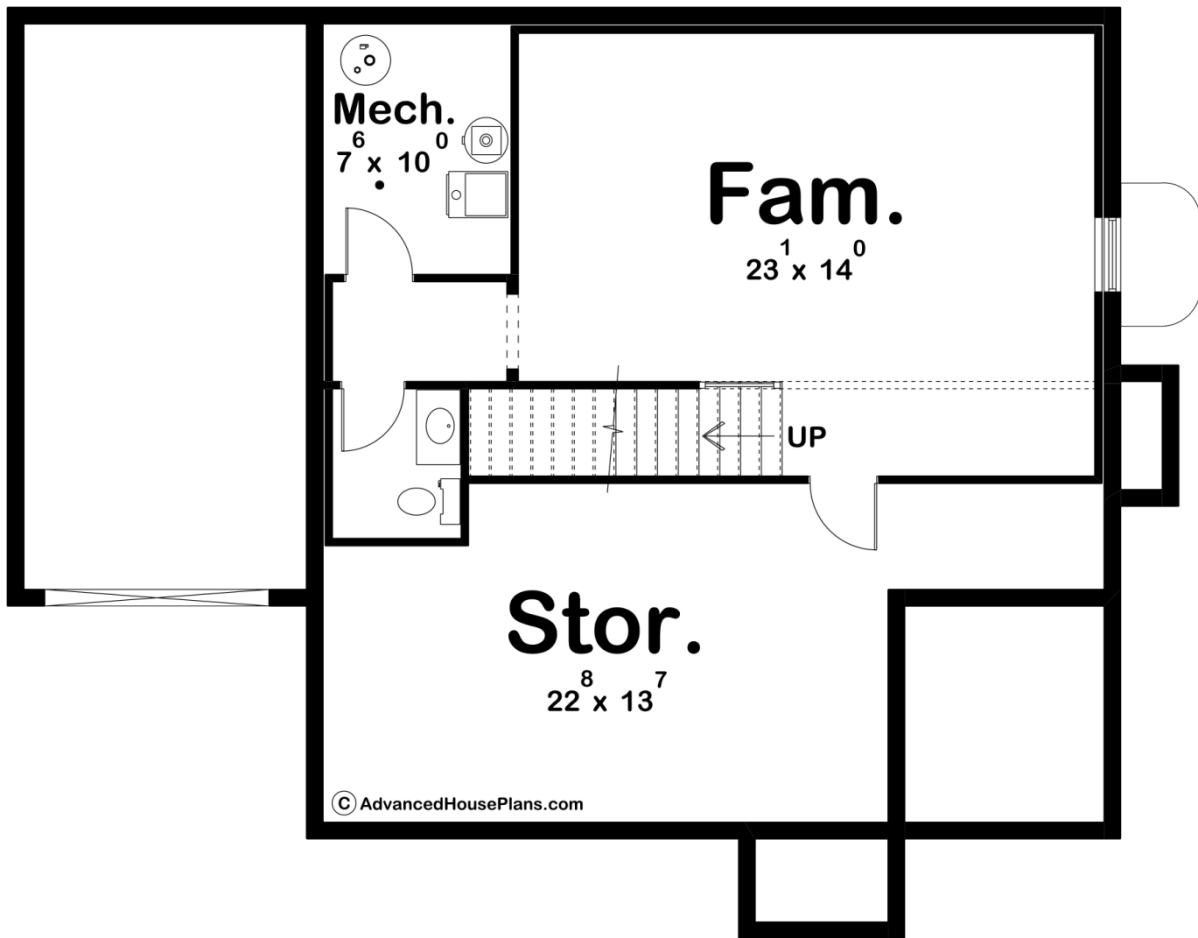
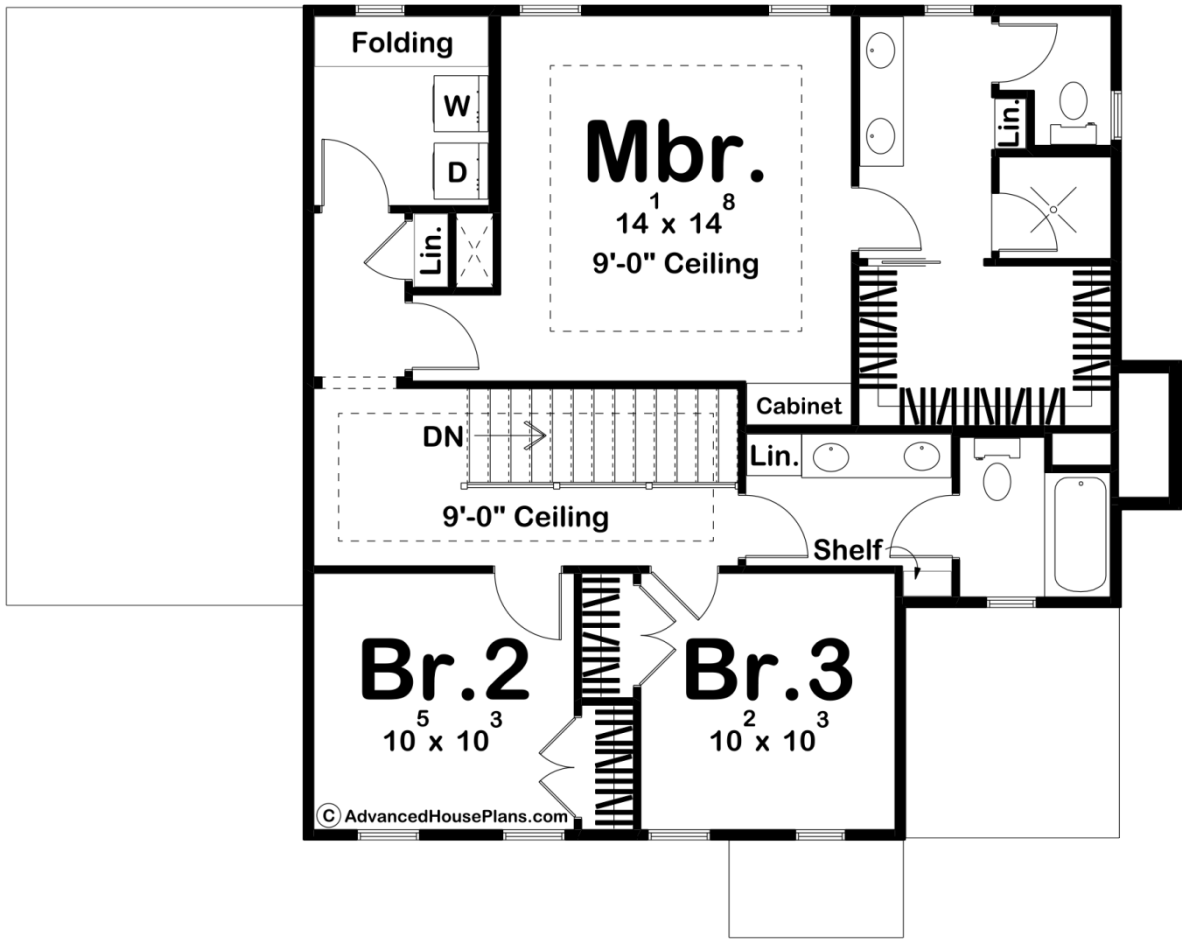




30250 - Warford Data Sheet

| | | | | | |
|---------------|-----------|------------|-----------|----------------|----------------|
| 1961 SQ FT | 3 BEDS | 3 BATHS | 1 BAYS | 47' 0" WIDE | 37' 4" DEEP |
|---------------|-----------|------------|-----------|----------------|----------------|





Layout

| | |
|-------------|---|
| Bedrooms | 3 |
| Bathrooms | 3 |
| Garage Bays | 1 |

Square Footage

| | |
|---------------------|--------------|
| Main Level | 1004 Sq. Ft. |
| Second Level | 957 Sq. Ft. |
| Covered Area | 108 Sq. Ft. |
| Garage | 288 Sq. Ft. |
| Total Finished Area | 1961 Sq. Ft. |

Exterior Dimensions

| | |
|--|--------|
| Width | 47' 0" |
| Depth | 37' 4" |
| Ridge Height <i>Calculated from main floor line</i> | 26' 9" |

Default Construction Stats

Stats are unique to the individual plan.

| | |
|----------------------------|-------------------------------------|
| Foundation Type | Basement |
| Exterior Wall Construction | 2x4 |
| Roof Pitches | Primary 6/12, Secondary 10/12, 4/12 |
| Foundation Wall Height | 9' |
| Main Wall Height | 9' |
| Second Wall Height | 8' |

Plan Description

The Warford plan is a traditional style house plan that boasts 1961 square feet, 3 bedrooms, and 3 bathrooms. Head inside the home through the covered porch to be welcomed with a beautiful entryway and inviting family room with built-in shelves and a fireplace. An additional fireplace is found in the den, straight ahead from the entryway. The dining room and kitchen can also be found here with an open concept, as well as a large walk-in pantry and a powder bath. Upstairs is where you can find the bedrooms, additional bathrooms and the laundry room. The master bedroom is complete with a 9' ceiling, built-in cabinet, and large private bathroom with a walk-in closet. The bathroom has a double vanity and separate shower and toilet areas. Bedrooms two and three share a Hollywood bath on the opposite side.