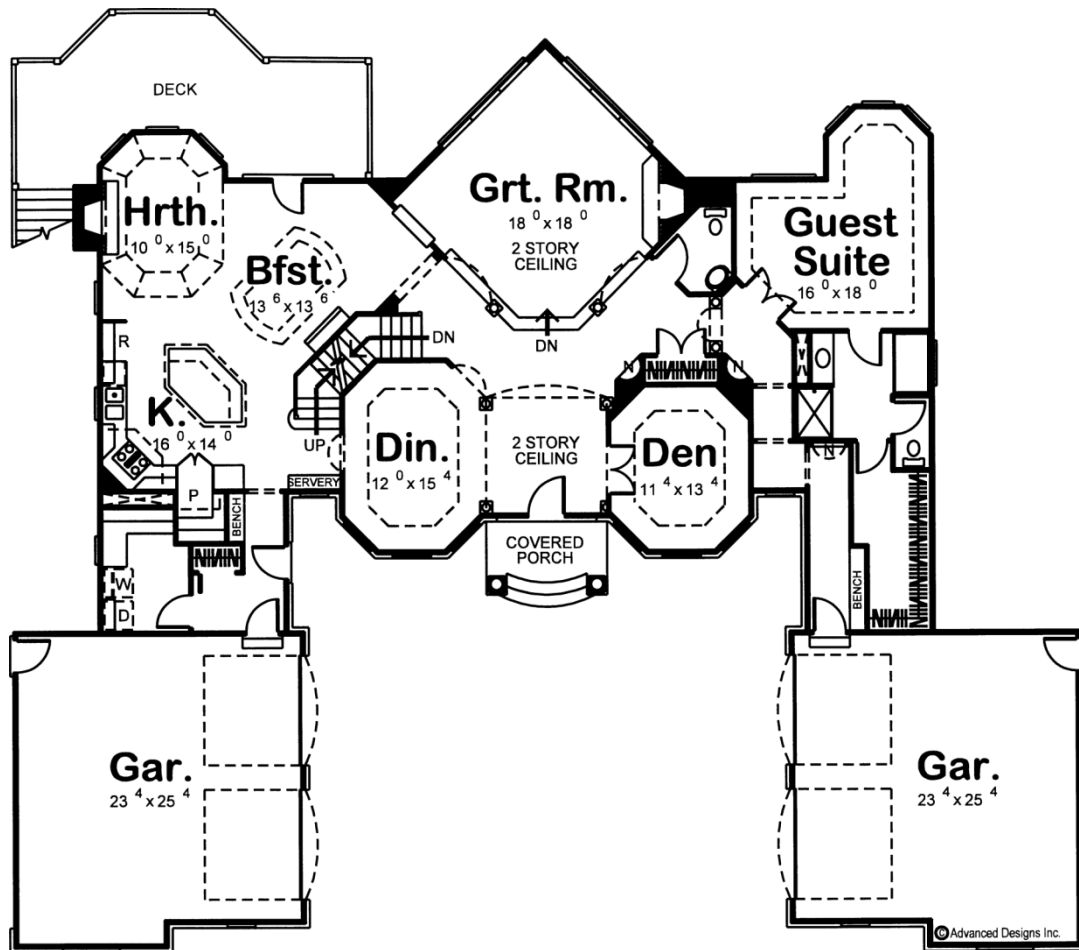
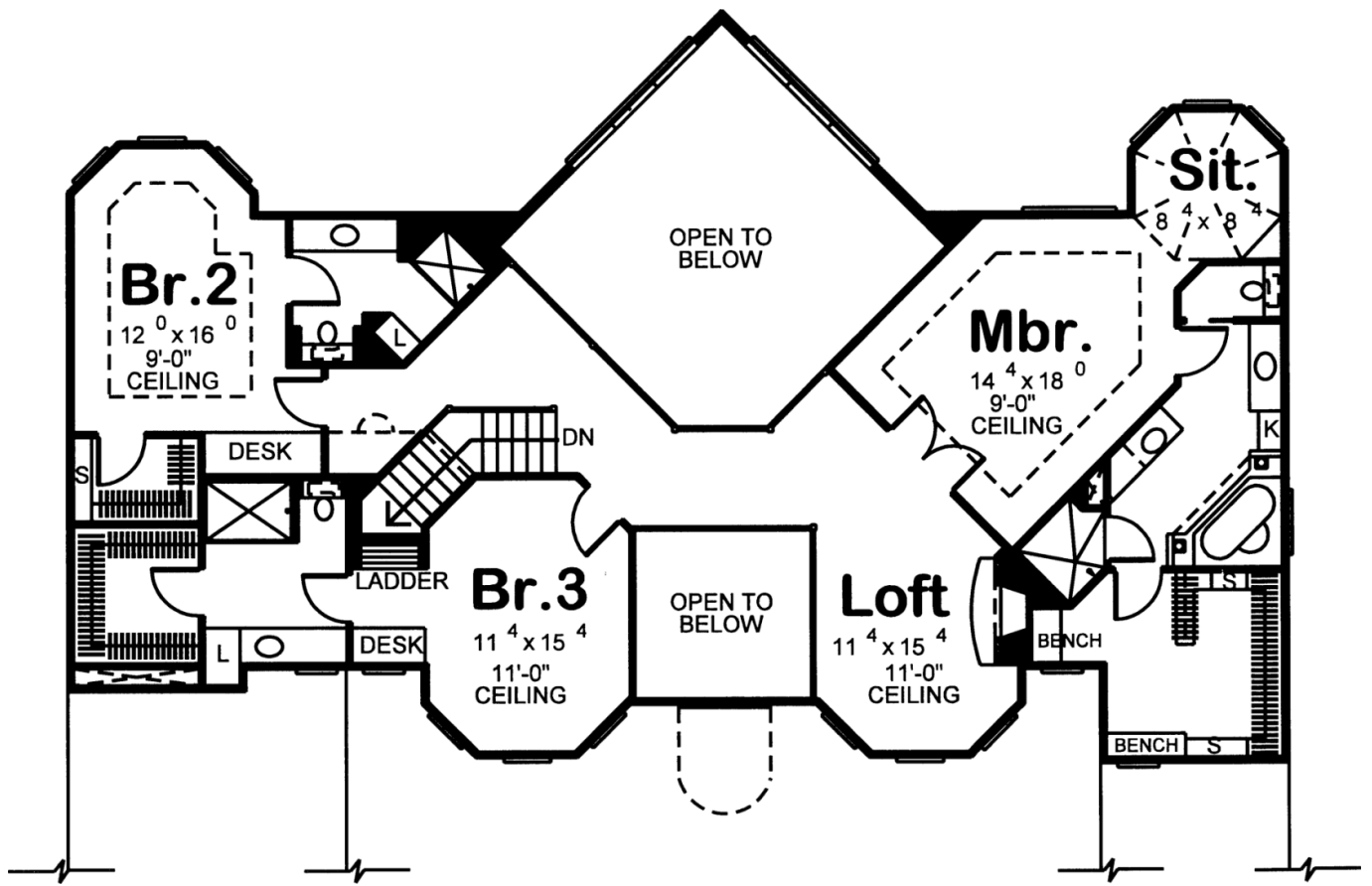




29134 - Waterford Data Sheet

4114 SQ FT	4 BEDS	5 BATHS	4 BAYS	88' 0" WIDE	75' 0" DEEP
---------------	-----------	------------	-----------	----------------	----------------





Construction Specs

Layout

Bedrooms	4
Bathrooms	5
Garage Bays	4

Square Footage

Main Level	2414 Sq. Ft.
Second Level	1700 Sq. Ft.
Garage	1194 Sq. Ft.
Total Finished Area	4114 Sq. Ft.

Exterior Dimensions

Width	88' 0"
Depth	75' 0"
Ridge Height	29' 0"
<i>Calculated from main floor line</i>	

Default Construction Stats

Stats are unique to the individual plan.

Foundation Type	Basement
Exterior Wall Construction	2x4
Roof Pitches	6/12
Foundation Wall Height	9'
Main Wall Height	9'
Second Wall Height	9'

Plan Description

29134 Waterford Perfect symmetry, classic details and an abundance of luxurious amenities in this stunning 2-story house plan, serve to captivate attention both inside and out. A high covered porch grants entrance, where a 2-story-high entry hall presents a formal dining room and den on either side. Guests are invited to venture to the great room, with corner fireplace and bright windows, beneath a soaring 2-story-high ceiling. Off to one side of the great room, the breakfast area, hearth room, and kitchen constitute another comfortable gathering area, with entertaining options that expand to the rear deck. Just off the kitchen, a utility area serves practical purposes with a laundry room and a mudroom that accesses one of the two, 2-car garages. On the opposite side of the home, a guest suite resides in privacy and includes a bath area with tub, shower, compartmented toilet and a spacious walk-in closet. The second level presents an airy landing space and a loft with fireplace. Views to the entry hall and great room below add to the appeal of this unique, semi-private area. The loft lies just outside the master suite, which includes a sunny octagonal sitting area and a bath that features his-and-her vanities, walk-in shower, corner soaking tub, compartmented toilet and a generously sized walk-in closet with dressing bench. Bedrooms 2 and 3 each include a built-in desk, private bathroom and walk-in closet