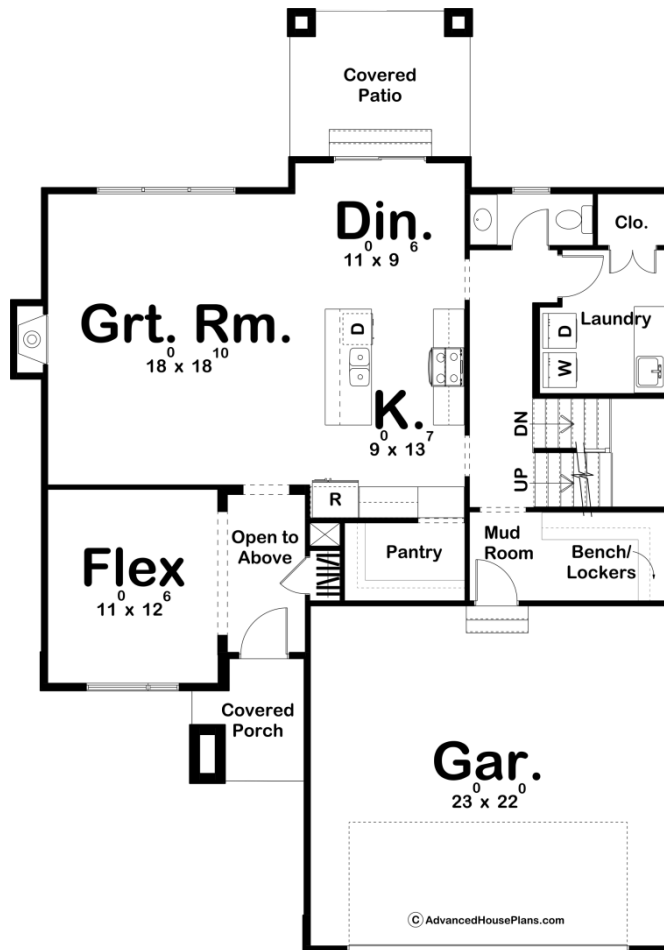
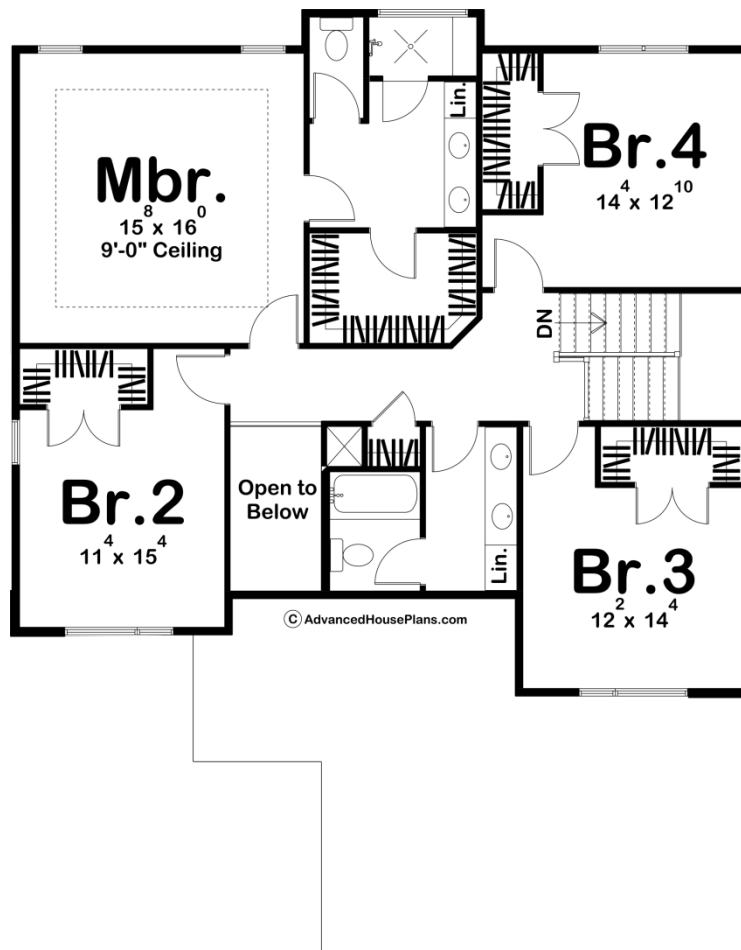




**29690 - Watkins Data Sheet**

2443 SQ FT	4 BEDS	3 BATHS	2 BAYS	43' 0" WIDE	61' 0" DEEP
---------------	-----------	------------	-----------	----------------	----------------





## Construction Specs

### Layout

Bedrooms	4
Bathrooms	3
Garage Bays	2

### Square Footage

Main Level	1203 Sq. Ft.
Second Level	1240 Sq. Ft.
Garage	527 Sq. Ft.
Total Finished Area	2443 Sq. Ft.

### Exterior Dimensions

Width	43' 0"
Depth	61' 0"

### Default Construction Stats

*Stats are unique to the individual plan.*

Foundation Type	Basement
-----------------	----------

Exterior Wall Construction	2x4
Roof Pitches	4/12 Primary
Foundation Wall Height	9'
Main Wall Height	9'
Second Wall Height	8'

## Plan Description

The Watkins is a 2 story Modern Prairie-style masterpiece! Along with a gorgeous facade, this house plan has many great Family-Centered features that make this an excellent plan for builders and homeowners alike. This house plan is designed with deep overhangs and a contemporary nod to the famous prairie-style home. The elevation combines the use of stone, stucco, and cedar to give it an ultra-modern look. The main floor features a well-designed kitchen with walk-in pantry, flex room, and covered patio out back. The stairs are tucked away from the public areas of the house, giving it a private feel and more conveniently accessed from the garage entrance which has bench and lockers integrated into the wall for a simple, efficient drop zone. The second floor features a generously-sized master suite, with tray ceiling, walk-in shower, and large walk-in closet. Each of the secondary bedrooms has a walk-in closet and share a centrally located bath.