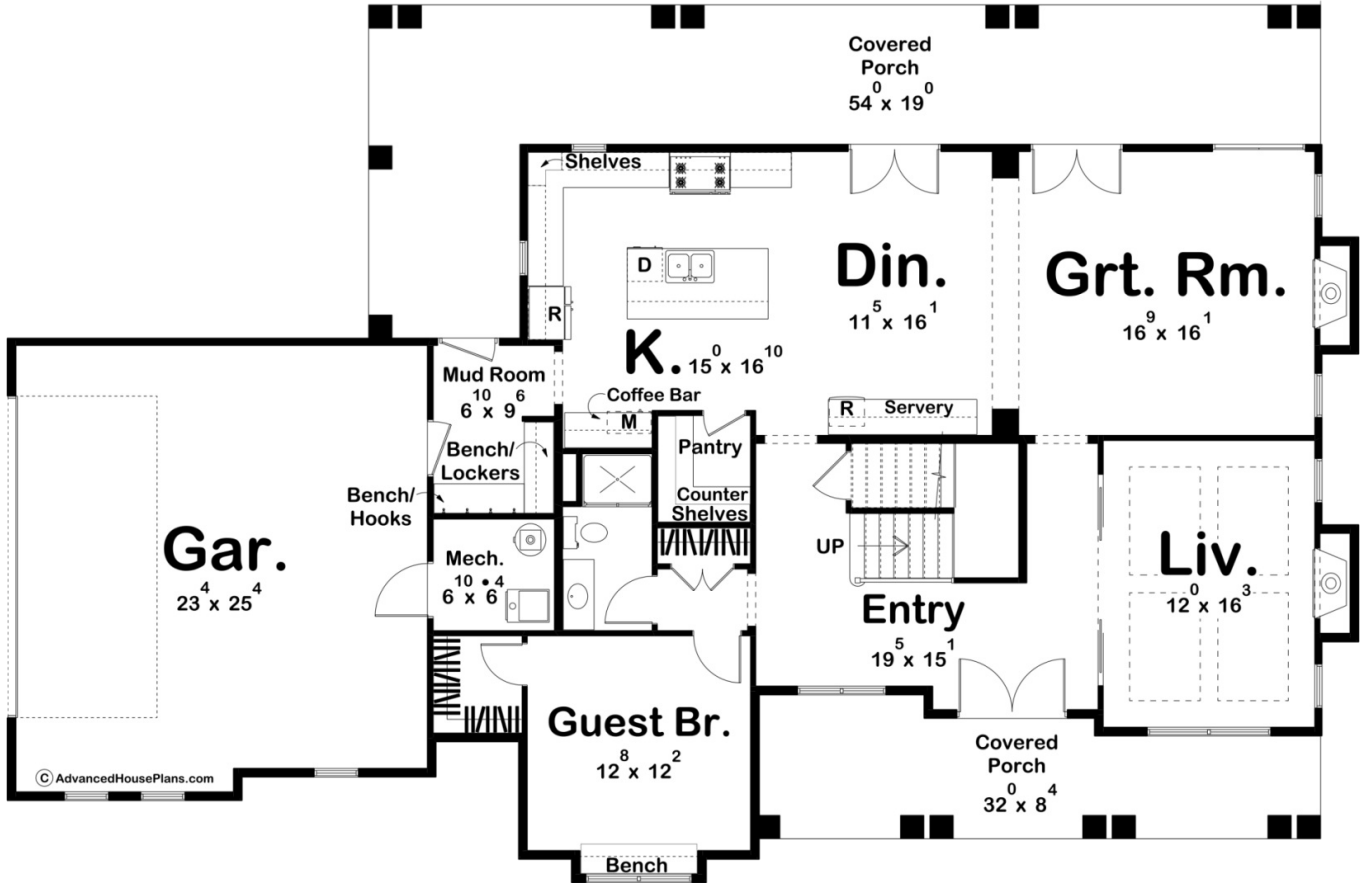
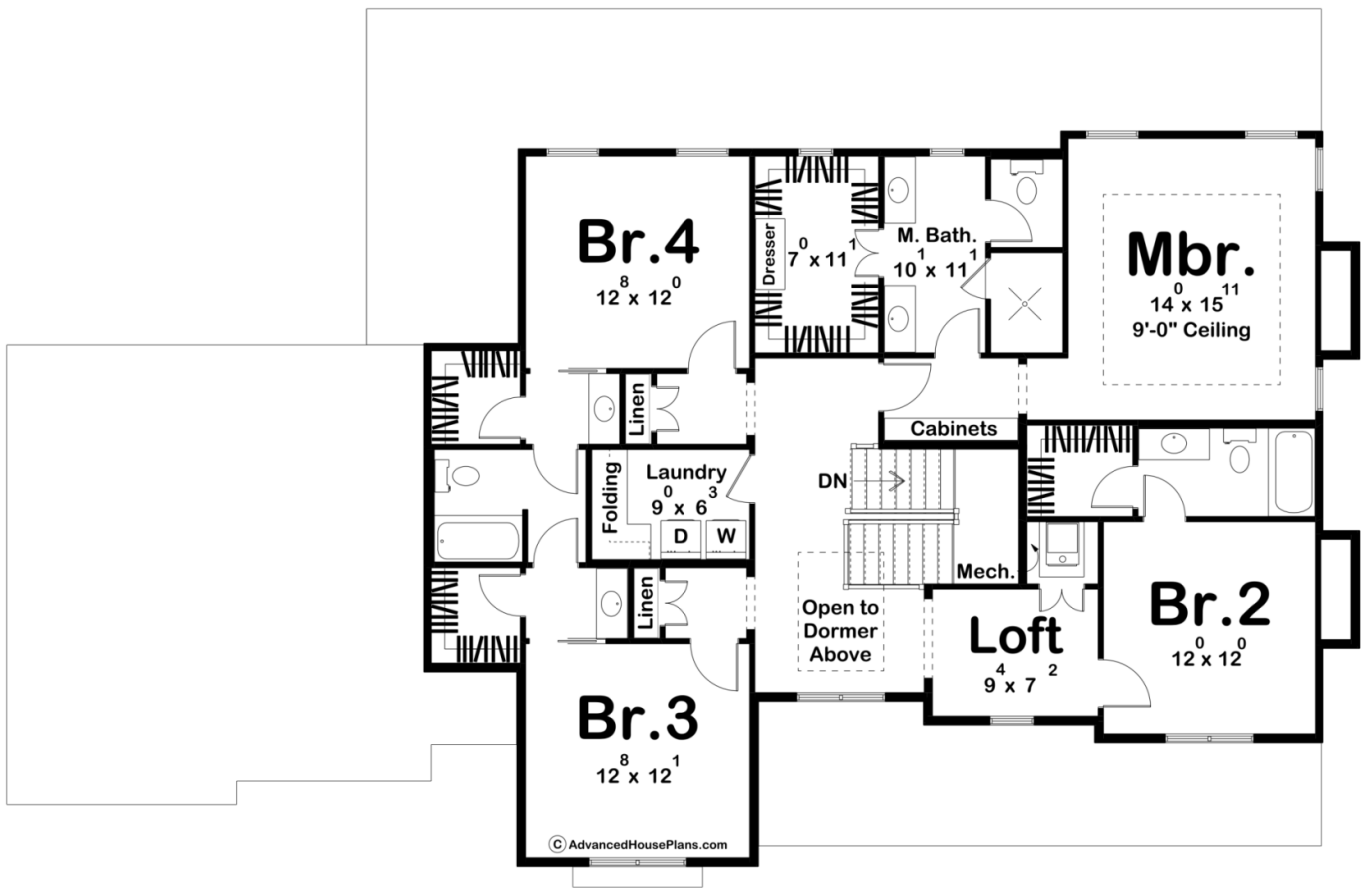




**30323 - Wharton Data Sheet**

3257 SQ FT	5 BEDS	4 BATHS	2 BAYS	76' 4" WIDE	49' 8" DEEP
---------------	-----------	------------	-----------	----------------	----------------





## Construction Specs

### Layout

Bedrooms	5
Bathrooms	4
Garage Bays	2

### Square Footage

Main Level	1659 Sq. Ft.
Second Level	1598 Sq. Ft.
Covered Area	751 Sq. Ft.
Garage	602 Sq. Ft.
Total Finished Area	3257 Sq. Ft.

### Exterior Dimensions

Width	76' 4"
Depth	49' 8"
Ridge Height	32' 1"

*Calculated from main floor line*

## Default Construction Stats

*Stats are unique to the individual plan.*

Foundation Type	Slab
Exterior Wall Construction	2x4
Roof Pitches	Primary 10/12, Secondary 12/12, 4/12, 6/12
Main Wall Height	9'
Second Wall Height	8'

## Plan Description

Welcome to your dream home! This two-story house plan offers the perfect blend of elegance and functionality, providing ample space for your family and guests. With five bedrooms, including a convenient guest bedroom on the main floor, this house is designed to accommodate all your needs. The exterior of this home exudes classic charm with a large covered porch gracing both the front and rear entrances. These inviting spaces offer a perfect setting for relaxation, outdoor gatherings, or simply enjoying the fresh air. Upon entering the home, you'll find yourself in a welcoming foyer that opens up to the main living areas on either side of the stairs. To your right, you'll discover a spacious living room, filled with natural light from large windows that overlook the front porch. There is a tray ceiling and fireplace to set the mood. To your left is the guest bedroom, complete with a hall bathroom, ensuring that your visitors have a comfortable and private stay. The heart of the home lies in the open-concept kitchen, dining area, and great room. The kitchen boasts modern amenities, ample counter space, and a central island, making it a chef's delight. The dining area is well-lit and spacious, perfect for family meals or entertaining. It also includes a large server for all your hosting needs. The great room, with its cozy fireplace and access to the rear porch, offers a warm and inviting space for relaxation and gatherings. Heading upstairs, you'll find four generously sized bedrooms, each with its own character and charm. Two bedrooms share access to a jack-and-jill bathroom, and walk-in closets ensure that everyone has room for their belongings. One bedroom has its own ensuite with a walk-in closet as well. The final bedroom is the master. It has a large walk-in closet and an ensuite. There is a double vanity and large walk-in shower. The room itself has a tray ceiling and many windows to allow in plenty of natural light. The second-floor layout provides flexibility, making it suitable for a growing family or accommodating various needs. Additional Features: A dedicated laundry room conveniently located on the second floor. Abundant storage space throughout the home, including closets, a walk-in pantry, and a two-car garage. Thoughtful design that maximizes natural light and promotes energy efficiency. Customizable finishes and interior design options to suit your personal style. This two-story house plan is not just a house; it's a place where you can create cherished memories with your loved ones. With its spacious layout, modern amenities, and charming exterior, it offers a warm and inviting atmosphere that you'll be proud to call home. Whether you're enjoying a quiet evening on the front porch or hosting a lively gathering in the great room, this house is designed to meet your family's needs and exceed your expectations.