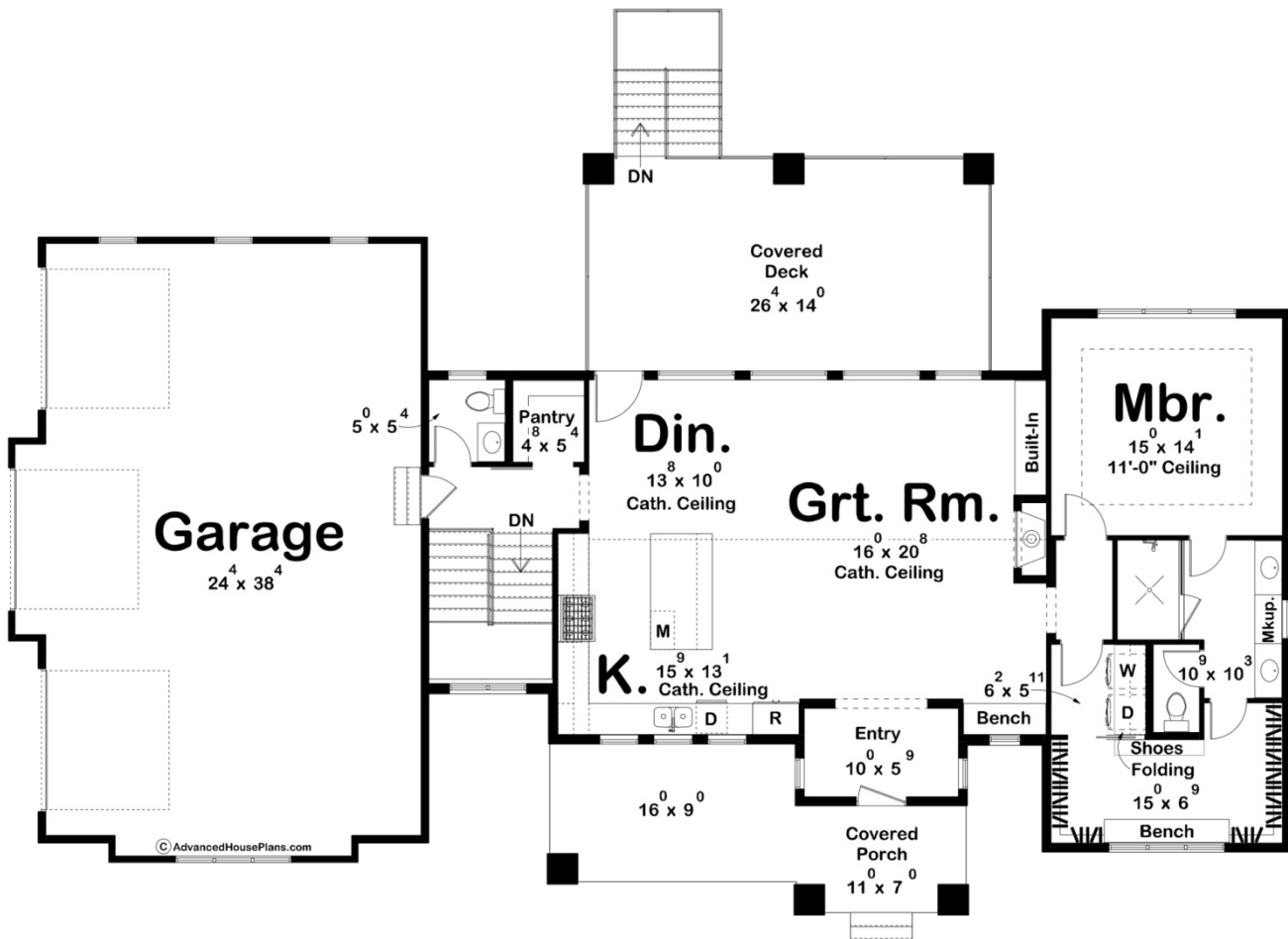
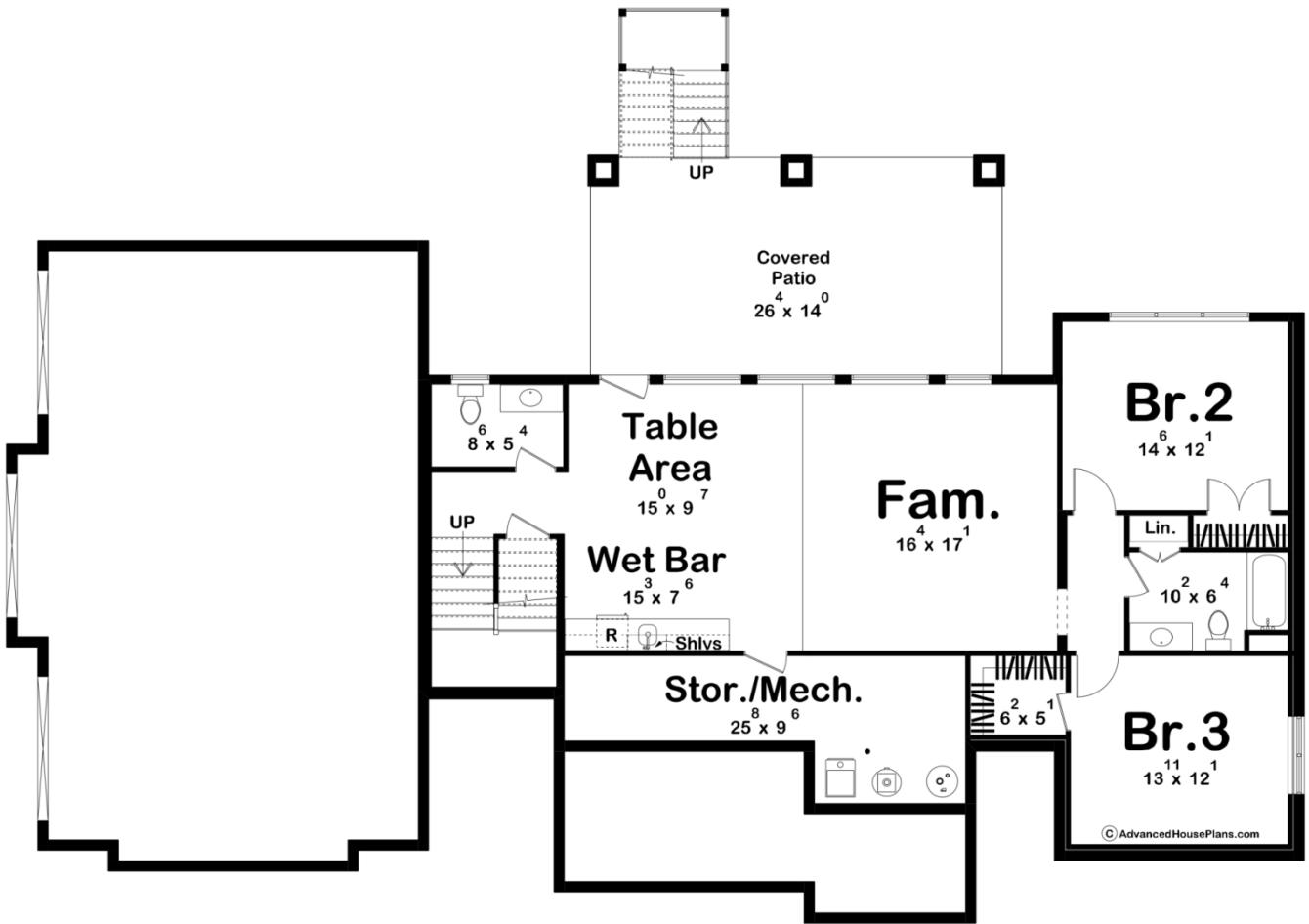




30451 - Whistling Lake Data Sheet

1545 SQ FT	1 BEDS	2 BATHS	3 BAYS	83' 0" WIDE	58' 6" DEEP
---------------	-----------	------------	-----------	----------------	----------------





Construction Specs

Layout

Bedrooms	1
Bathrooms	2
Garage Bays	3

Square Footage

Main Level	1545 Sq. Ft.
Covered Area	589 Sq. Ft.
Garage	1014 Sq. Ft.
Total Finished Area	1545 Sq. Ft.

Exterior Dimensions

Width	83' 0"
Depth	58' 6"
Ridge Height	21' 6"
<i>Calculated from main floor line</i>	

Default Construction Stats

Stats are unique to the individual plan.

Foundation Type	Walkout
Exterior Wall Construction	2x4
Roof Pitches	Primary 10/12, Secondary 8/12
Foundation Wall Height	9'
Main Wall Height	10'

Plan Description

Introducing the Whistling Lake, our newest Beach-Lake Style House Plan. This charming 1-story walkout house features a welcoming facade with a cozy covered porch and a 3-car garage discreetly tucked away on the side. Upon entering, you'll find a dedicated entryway that opens up into an expansive open-concept space, encompassing the great room, kitchen, and dining area. The main floor includes one bedroom and two bathrooms, with the master bedroom boasting an ensuite bathroom and a walk-in closet. Downstairs, the home offers an additional 1,203 sq. ft. of living space, which includes two more bedrooms, two bathrooms, and an open-concept family room complete with a wet bar. A large storage area provides ample space for keeping belongings organized. Whistling Lake perfectly blends elegance and functionality, making it an ideal choice for those looking to enjoy the beauty of a beach or lake setting while relishing all the comforts of modern living.