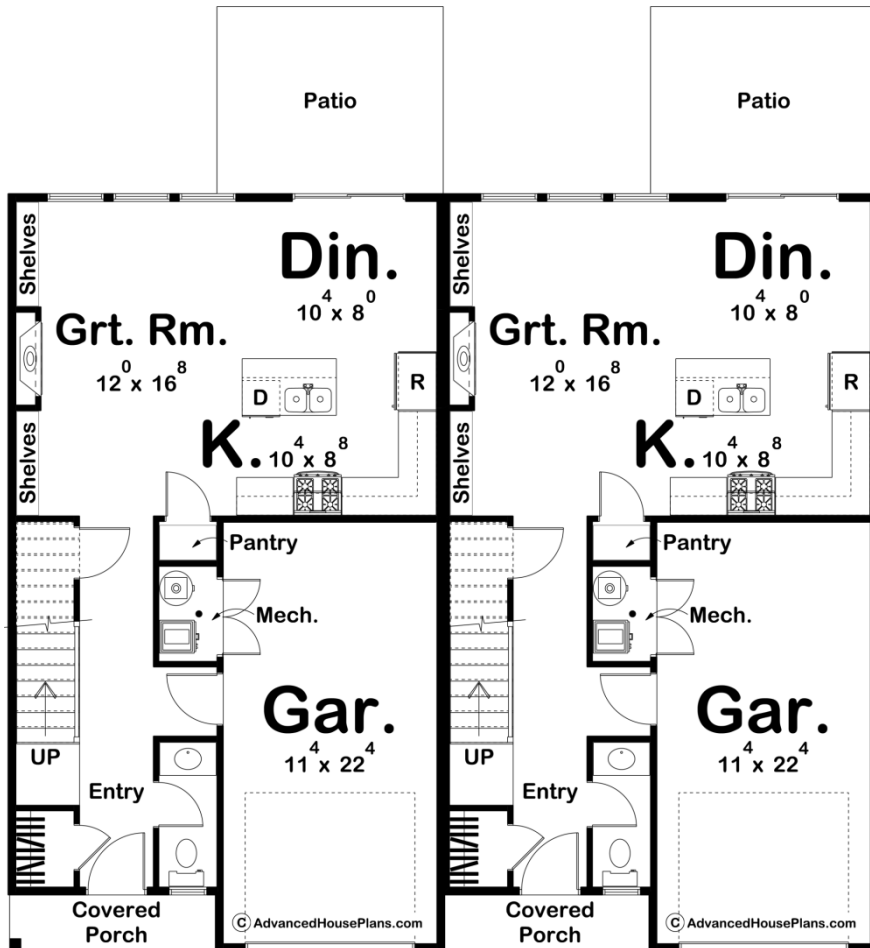
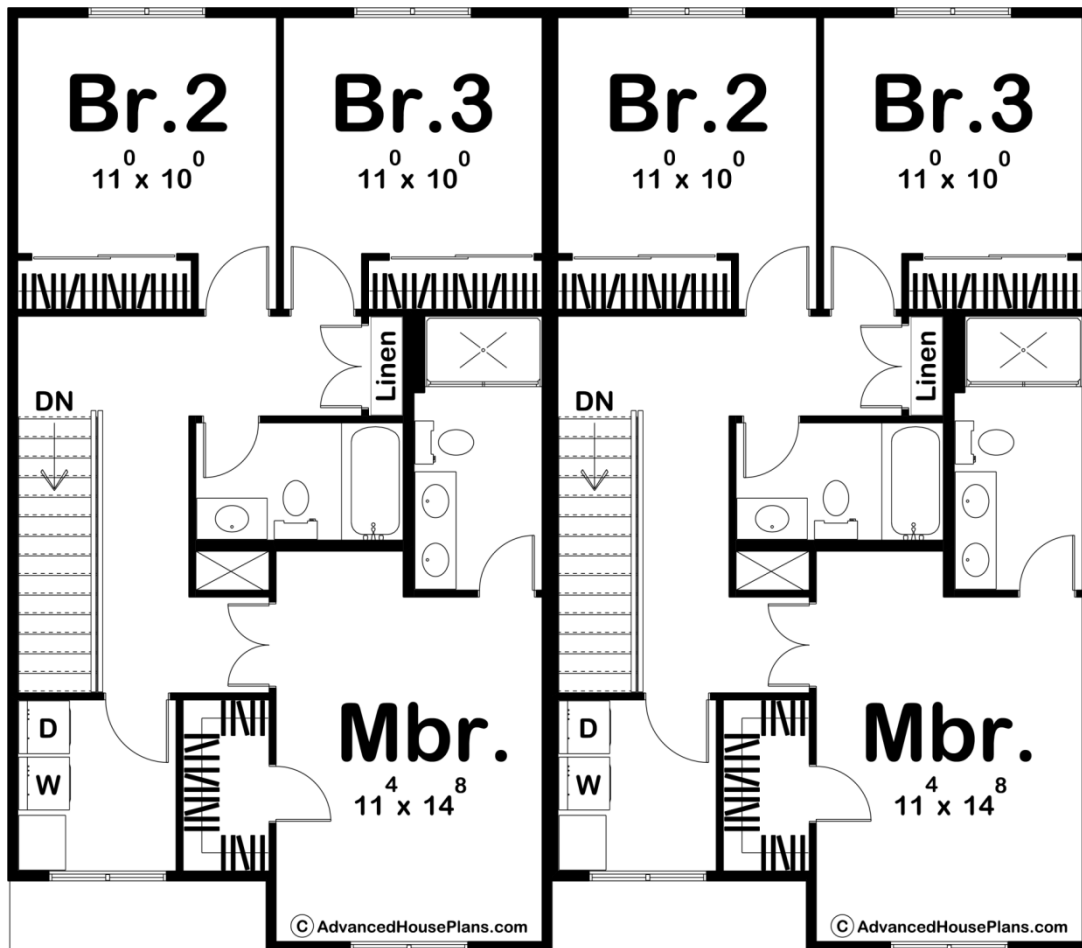




30144 - Whitley Data Sheet

1464 SQ FT	3 BEDS	3 BATHS	1 BAYS	46' 0" WIDE	40' 0" DEEP
---------------	-----------	------------	-----------	----------------	----------------





Construction Specs

Layout

Bedrooms	3
Bathrooms	3
Garage Bays	1

Square Footage

Main Level	622 Sq. Ft.
Second Level	842 Sq. Ft.
Covered Area	33 Sq. Ft.
Garage	264 Sq. Ft.
Total Finished Area	1464 Sq. Ft.

Exterior Dimensions

Width	46' 0"
Depth	40' 0"
Ridge Height	28' 0"
<i>Calculated from main floor line</i>	

Default Construction Stats

Stats are unique to the individual plan.

Foundation Type	Slab
Exterior Wall Construction	2x4
Roof Pitches	6/12 Primary, 10/12 Secondary
Main Wall Height	9'
Second Wall Height	8'

Plan Description

The Whitley is the duplex version of our Tara Hills plan. It is an affordable 2-Story Modern Farmhouse style plan. The exterior features board and batten siding and a covered porch. The great room, kitchen, and dining room flow seamlessly in an open layout. The great room is warmed by a fireplace that is flanked by built-in bookshelves. The L-shaped kitchen includes an island and a reach-in pantry. A sliding glass door leads to the rear patio from the dining room. Upstairs, you'll find 3 bedrooms. The master suite includes a bathroom with dual vanities and a walk-in shower. Bedrooms 2 and 3 share a centrally located hall bathroom.