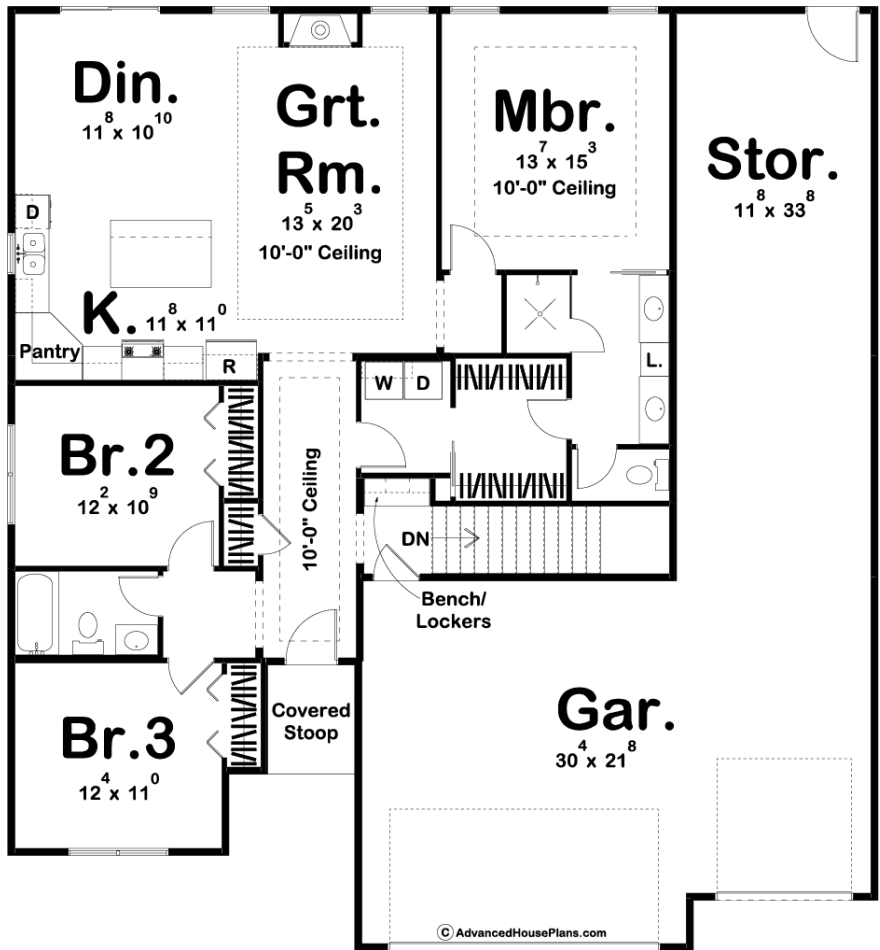




**29679 - Willow Grove Data Sheet**

1617 SQ FT	3 BEDS	2 BATHS	4 BAYS	51' 8" WIDE	66' 0" DEEP
---------------	-----------	------------	-----------	----------------	----------------



**Construction Specs**

Layout

Bedrooms

Bathrooms	2
-----------	---

Garage Bays	4
-------------	---

### Square Footage

Main Level	1617 Sq. Ft.
------------	--------------

Garage	1056 Sq. Ft.
--------	--------------

Total Finished Area	1617 Sq. Ft.
---------------------	--------------

### Exterior Dimensions

Width	51' 8"
-------	--------

Depth	66' 0"
-------	--------

### Default Construction Stats

*Stats are unique to the individual plan.*

Foundation Type	Basement
-----------------	----------

Exterior Wall Construction	2x4
----------------------------	-----

Roof Pitches	6/12 Primary, 4/12 Secondary
--------------	------------------------------

Foundation Wall Height	9'
------------------------	----

Main Wall Height	9'
------------------	----

## Plan Description

A seemingly endless array of enticing amenities are found in this 1 story, Craftsman-style house plan. A covered front stoop greets guests, who upon entering the home, are treated to views of the great room. The great room captivates its occupants with a trayed ceiling and is warmed by a fireplace. The kitchen, with an island workspace and pantry, flows seamlessly into the dining room. The master suite includes a master bath with his and her vanities and a walk-in closet with access to the laundry room. Bedrooms 2 and 3 share a centrally located hall bathroom. This homes massive garage has enough room for a 4th car or storage. As always any Advanced House Plans home plan can be customized to fit your needs with our alteration department. Whether you need to add another garage stall, change the front elevation, stretch the home larger or just make the home plan more affordable for your budget we can do that and more for you at Ahp.