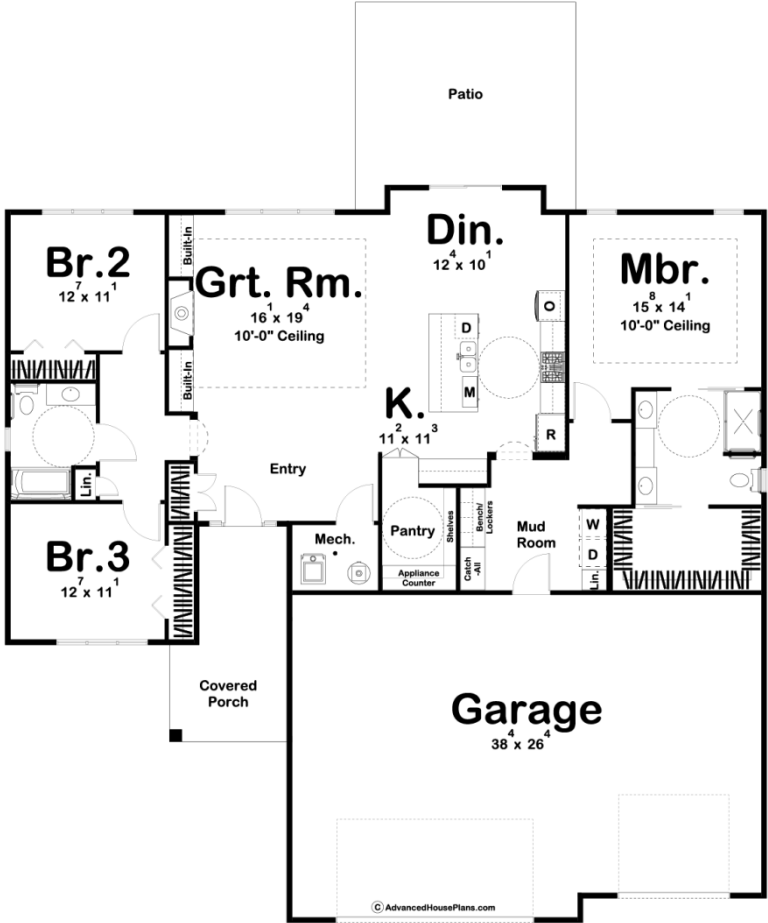




30097 - Woodside Data Sheet

1990 SQ FT	3 BEDS	2 BATHS	3 BAYS	62' 0" WIDE	60' 0" DEEP
---------------	-----------	------------	-----------	----------------	----------------



Construction Specs

Layout
--------

Bedrooms

Bathrooms	2
Garage Bays	3
<b>Square Footage</b>	
Main Level	1990 Sq. Ft.
Garage	1010 Sq. Ft.
Total Finished Area	1990 Sq. Ft.
<b>Exterior Dimensions</b>	
Width	62' 0"
Depth	60' 0"
Ridge Height	21' 0"
<i>Calculated from main floor line</i>	
<b>Default Construction Stats</b>	
<i>Stats are unique to the individual plan.</i>	
Foundation Type	Slab
Exterior Wall Construction	2x4
Roof Pitches	8/12 Primary, 10/12 Secondary
Main Wall Height	9'

## Plan Description

The Woodside house plan is an ADA compliant Modern Farmhouse with a functional floor plan and unique exterior. It features board and batten siding paired with standing seam metal over the porch. The Woodside features an open floor plan that feels huge! It's got a deep walk-in pantry, hidden by cabinet-faced doors, and tons of space in the mud room to keep your life, and this beautiful home, organized. The Master Suite is generously sized with a walk-in shower and a spacious walk-in closet.