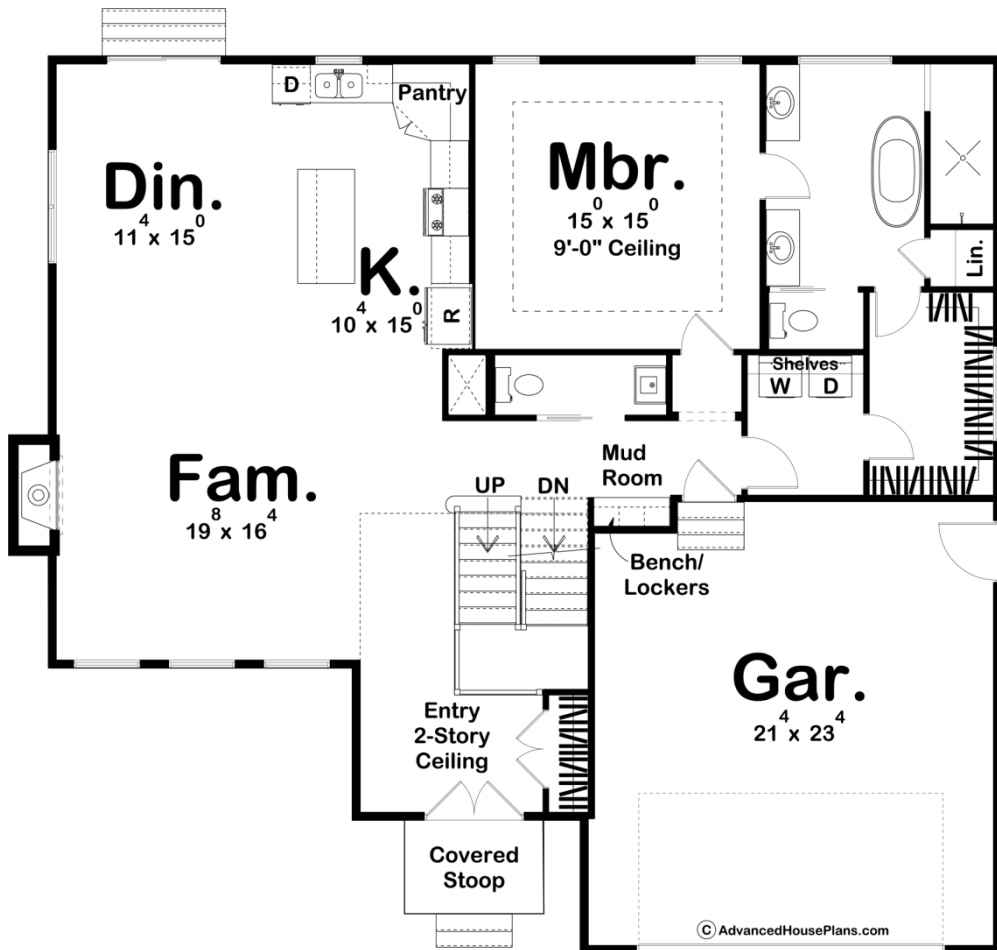
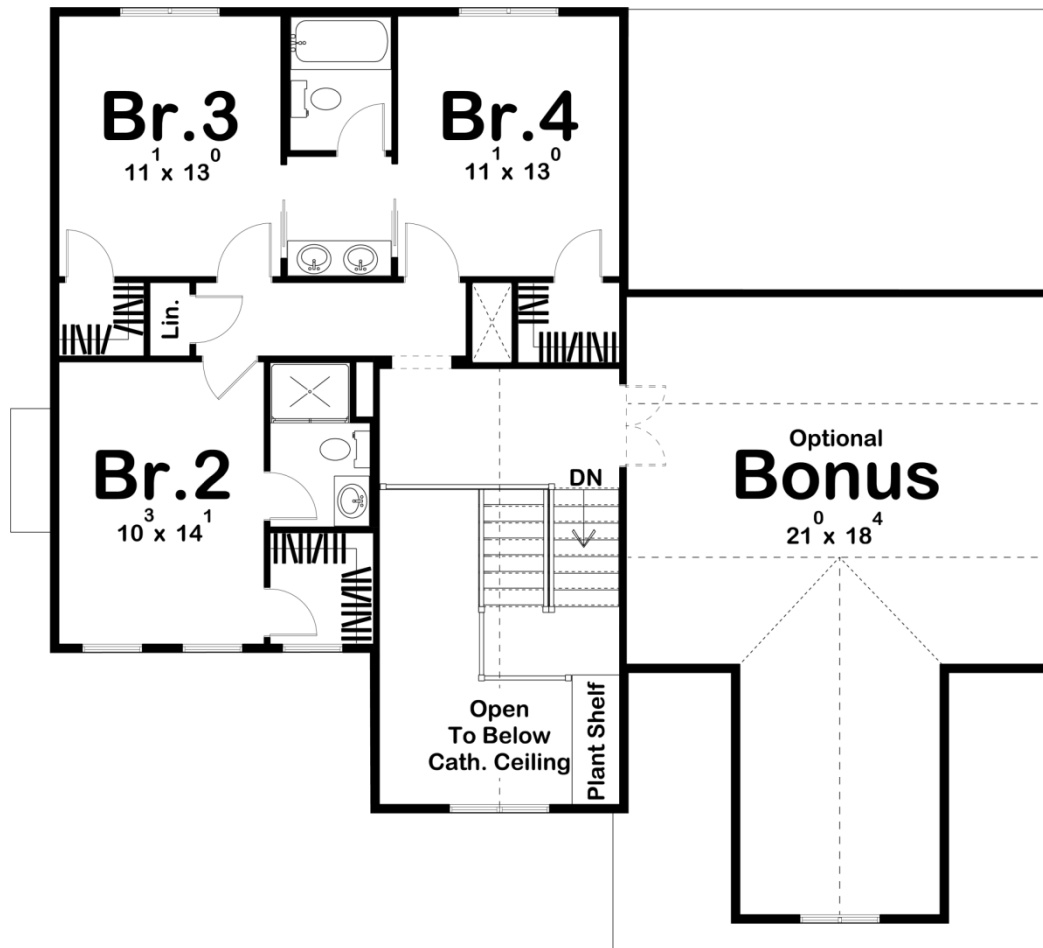




**30114 - Woodward Data Sheet**

|               |           |            |           |                |                |
|---------------|-----------|------------|-----------|----------------|----------------|
| 2344<br>SQ FT | 4<br>BEDS | 4<br>BATHS | 2<br>BAYS | 52' 0"<br>WIDE | 47' 0"<br>DEEP |
|---------------|-----------|------------|-----------|----------------|----------------|





## Construction Specs

### Layout

|             |   |
|-------------|---|
| Bedrooms    | 4 |
| Bathrooms   | 4 |
| Garage Bays | 2 |

### Square Footage

|                     |              |
|---------------------|--------------|
| Main Level          | 1517 Sq. Ft. |
| Second Level        | 827 Sq. Ft.  |
| Garage              | 502 Sq. Ft.  |
| Total Finished Area | 2344 Sq. Ft. |

### Exterior Dimensions

|  |        |
|--|--------|
| Width                                  | 52' 0" |
| Depth                                  | 47' 0" |
| Ridge Height                           | 28' 0" |
| <i>Calculated from main floor line</i> |        |

## Default Construction Stats

*Stats are unique to the individual plan.*

|                            |                               |
|----------------------------|-------------------------------|
| Foundation Type            | Basement                      |
| Exterior Wall Construction | 2x4                           |
| Roof Pitches               | 6/12 Primary, 14/12 Secondary |
| Foundation Wall Height     | 9'                            |
| Main Wall Height           | 9'                            |
| Second Wall Height         | 8'                            |

## Plan Description

Modern styling, accented by steep rooflines and contrasting stucco siding, conveys a welcoming appearance to this efficiently designed, 1.5-story home plan. Entry through the front covered stoop reveals an open arrangement of the family room, dining area, and kitchen. The great room is warmed by a fireplace and brightened by a trio of windows on the front wall. The kitchen itself includes an island and a convenient corner pantry. The main-floor master suite is entered through an entry cove and features a 9-foot-high boxed ceiling. Its bath area features his and her vanities, walk-in shower, compartmented toilet and a walk-in closet. The walk-in closet also accesses a utility area that includes the laundry, powder bath, and mud area, featuring a bench and lockers. On a practical note, this utility area intercepts debris from the outside, as it accesses the home's 2-car garage. On the second level, three bedrooms all enjoy their own walk-in closets. Bedroom 2 has its own bath, complete with shower, while bedrooms 3 and 4 share a Jack-n-Jill bath. An optional attic area offers expansive storage space, along with countless other options for its use.